

McIDAS-X Software Development and Demonstration

Dave Santek and Jay Heinzelman

2 June 2009

PDA Animated Weather (PAW) Status
by
Russ Dengel

Overview

- McIDAS-X 2008, 2009.1
- McIDAS-XRD 2008, 2009.1
- Software Development and Plans in 2009
- PAW Status

McIDAS-X 2008

- MTSAT updates
- MSG corrections
- Metop FRAC Level 1b server
- GeoTIFF write server improvements
- GOES-R ABI simulated data
- OpenMTP server
- MODIS CREF product server

MTSAT Updates

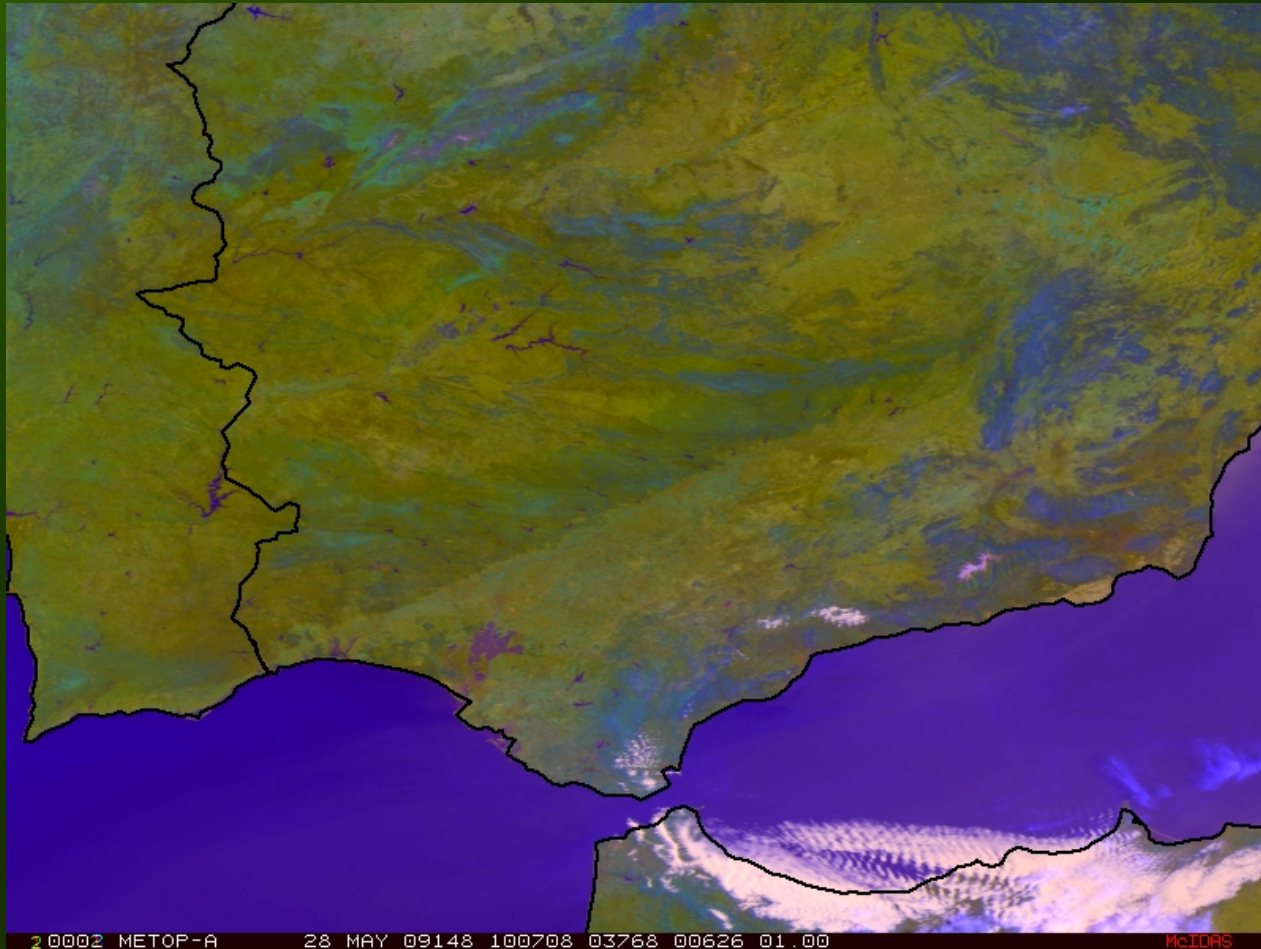
- Navigation module
 - Update to account for variable subpoint
 - Corrected transformation for points near limb
 - Satellite, sun, and relative angles available for ANGLES program
- List of bands can be input for IMGCOPY

MSG Updates

- Navigation module
 - Update to account for variable subpoint
 - Corrected transformation for points near limb

Metop FRAC

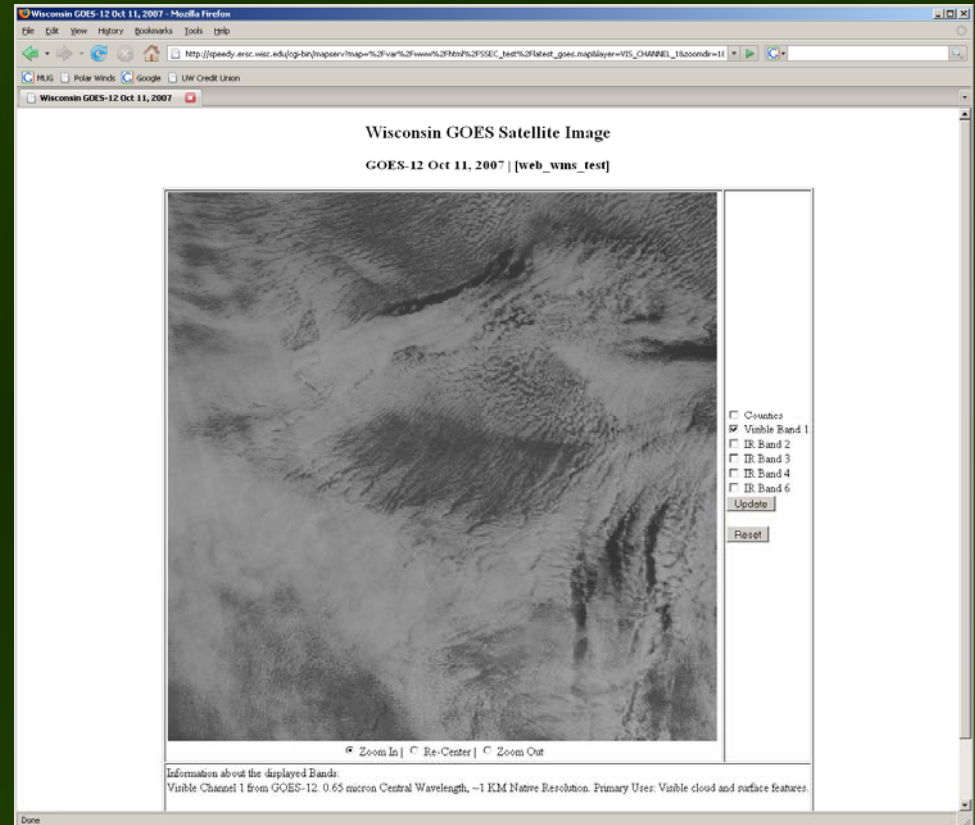
(Global full resolution)



3-color combination

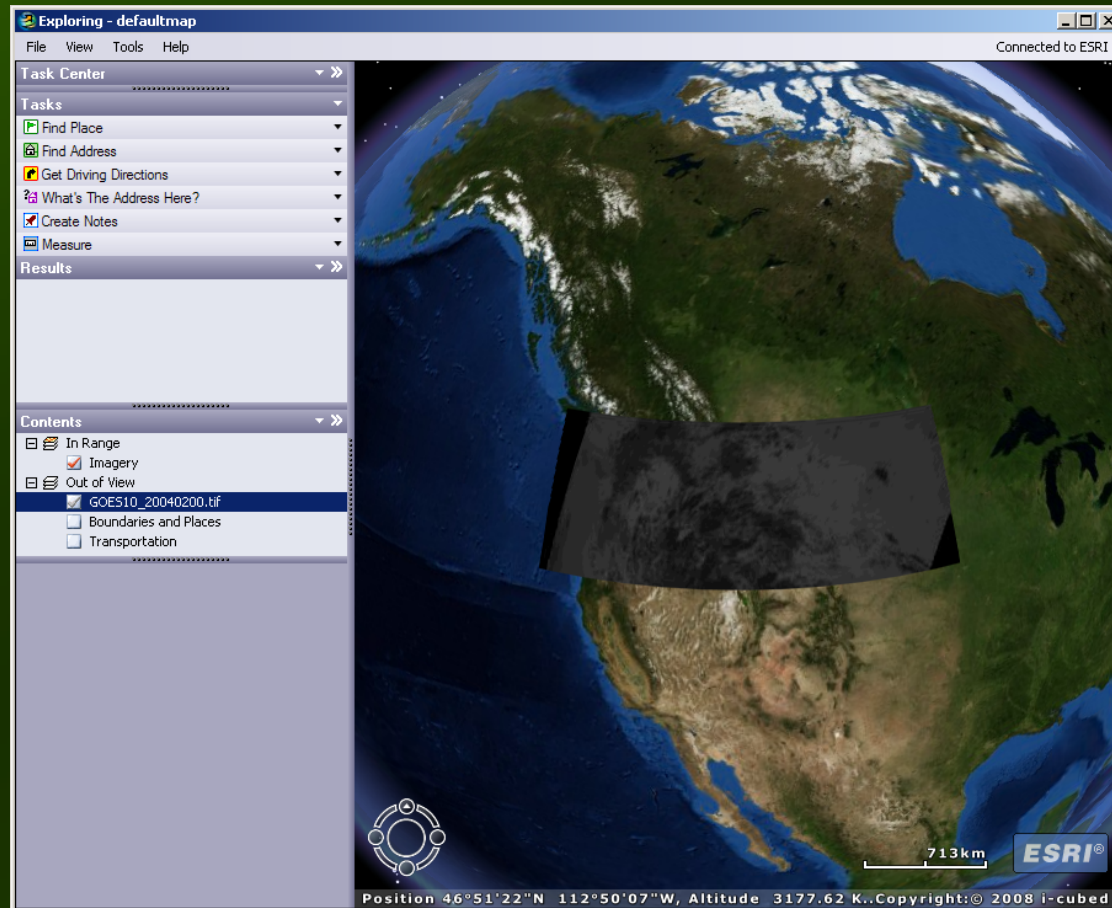
GeoTIFF Server Update

- Added and corrected GeoTIFF tags used by GIS packages
- Updated to use WGS 84

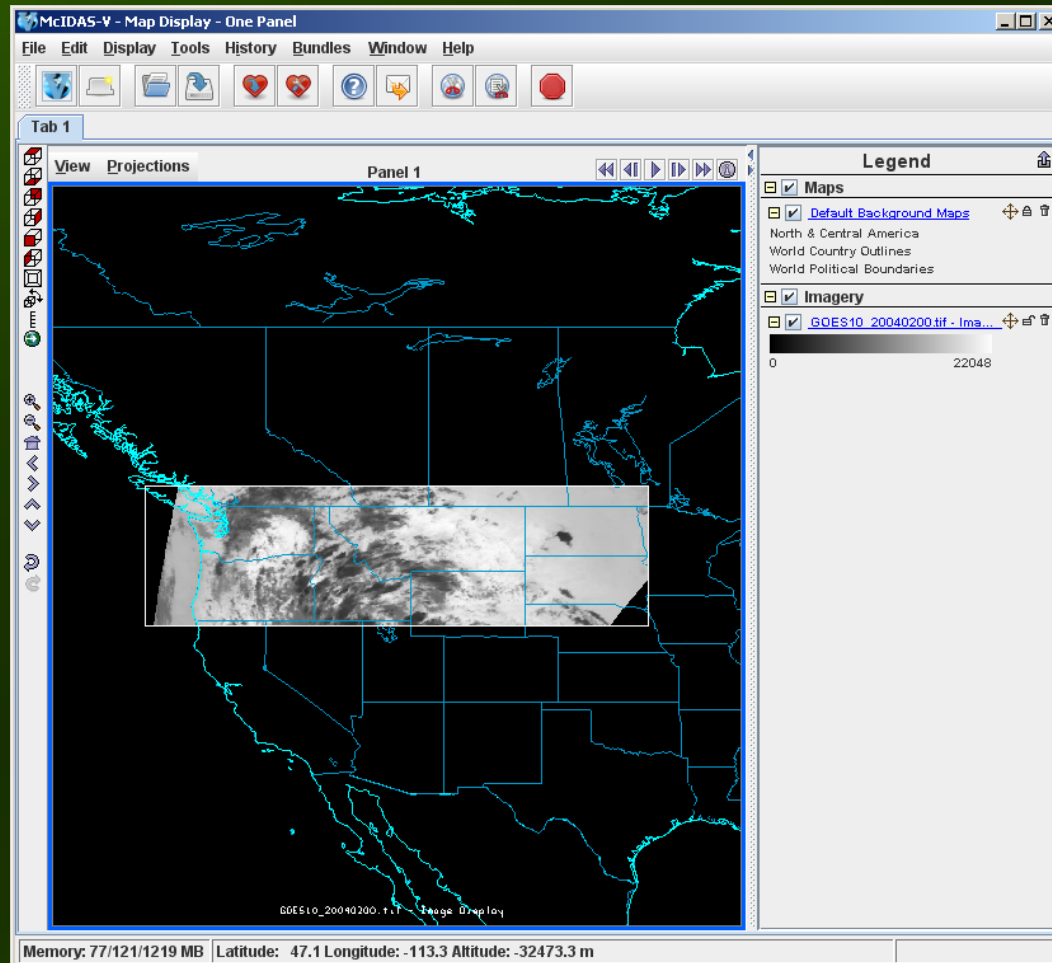


Web Map Service

GeoTIFF update (ArcGIS)

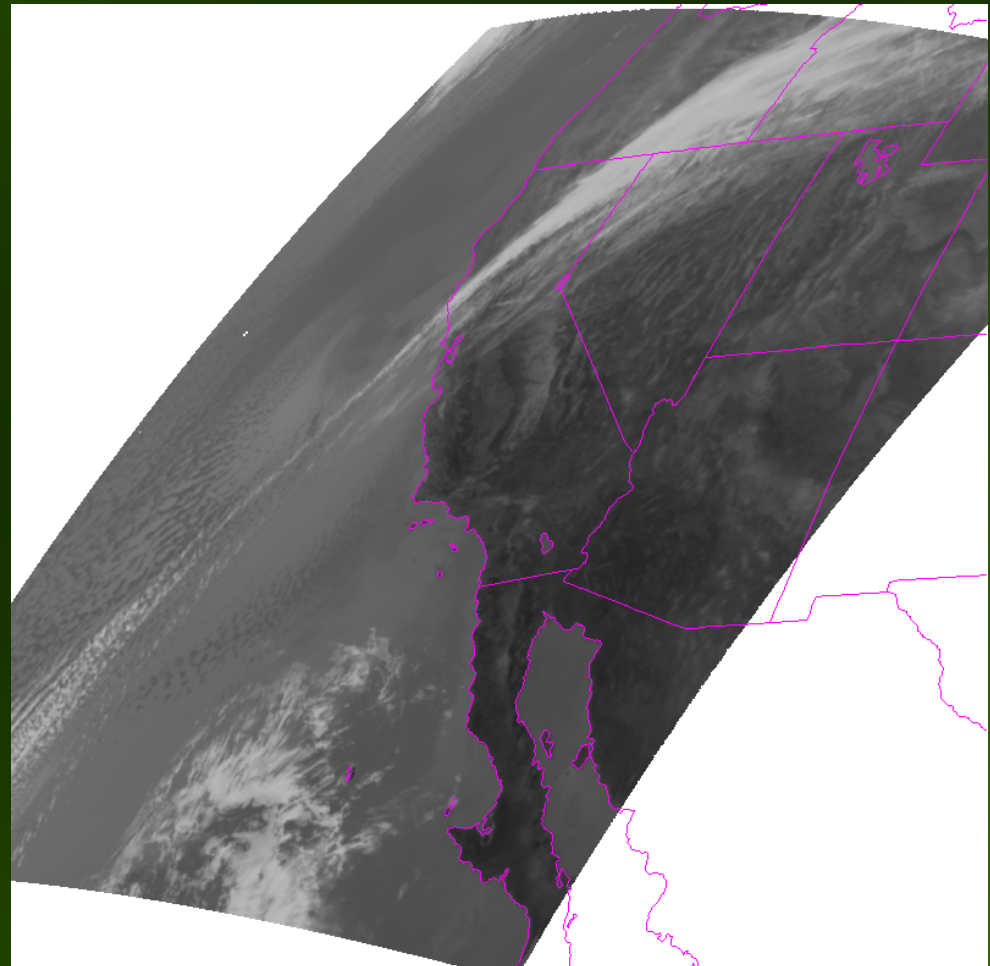


GeoTIFF update (McIDAS-V)



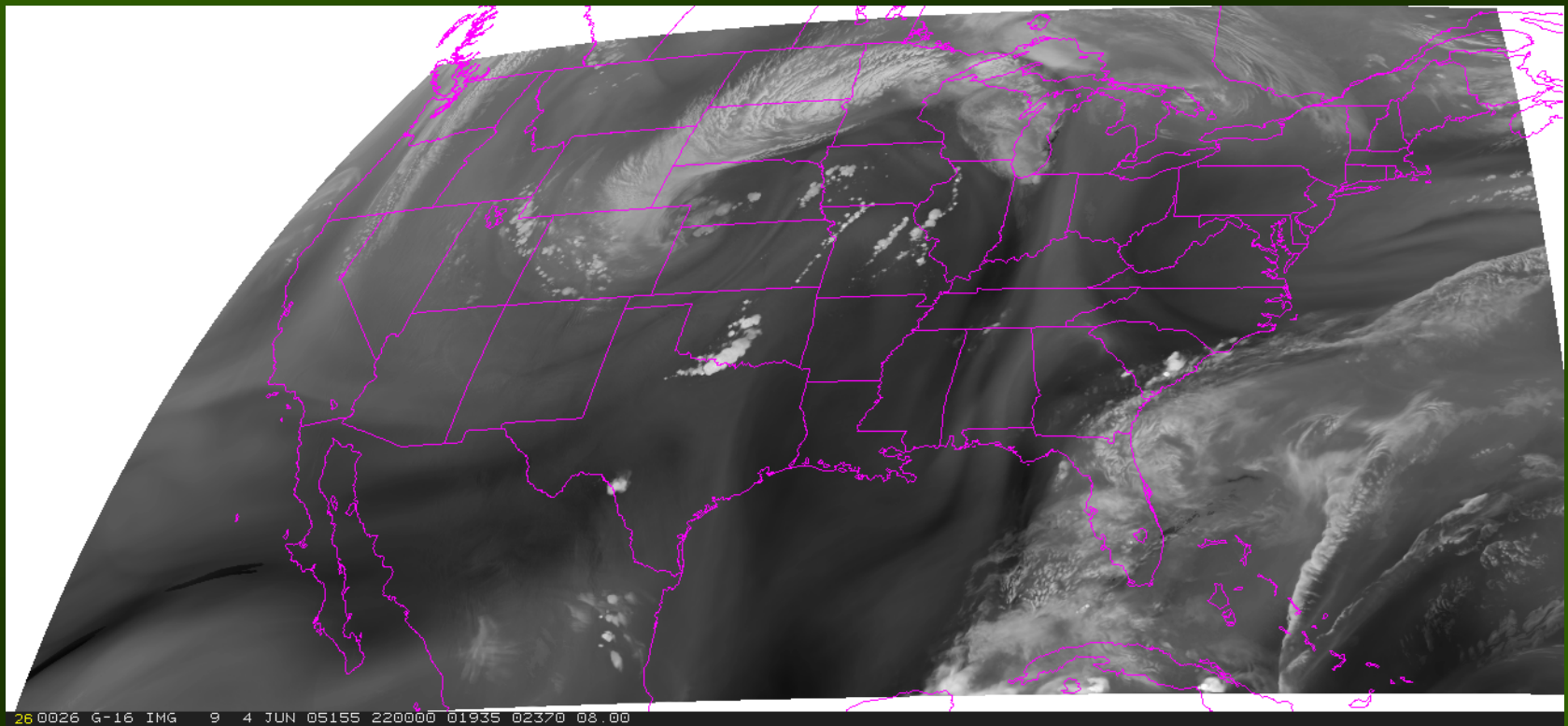
GOES-R

- Advanced Baseline Imager (ABI) navigation and calibration modules
- Being used with simulated data (this example uses MODIS)



25 0025 G-16 IMG 14 26 OCT 07299 185500 02825 02805 04.00

GOES-R



Simulated water vapor channel (6.95 μm) from high resolution model

OpenMTP Server

- OpenMTP (Meteosat Transition Programme) is a EUMETSAT satellite image archive format
 - Server works with Meteosat-7 data that the SSEC Data Center receives from NOAA
 - Server needs some work for use with data ordered from EUMETSAT archive

MODIS CREF server

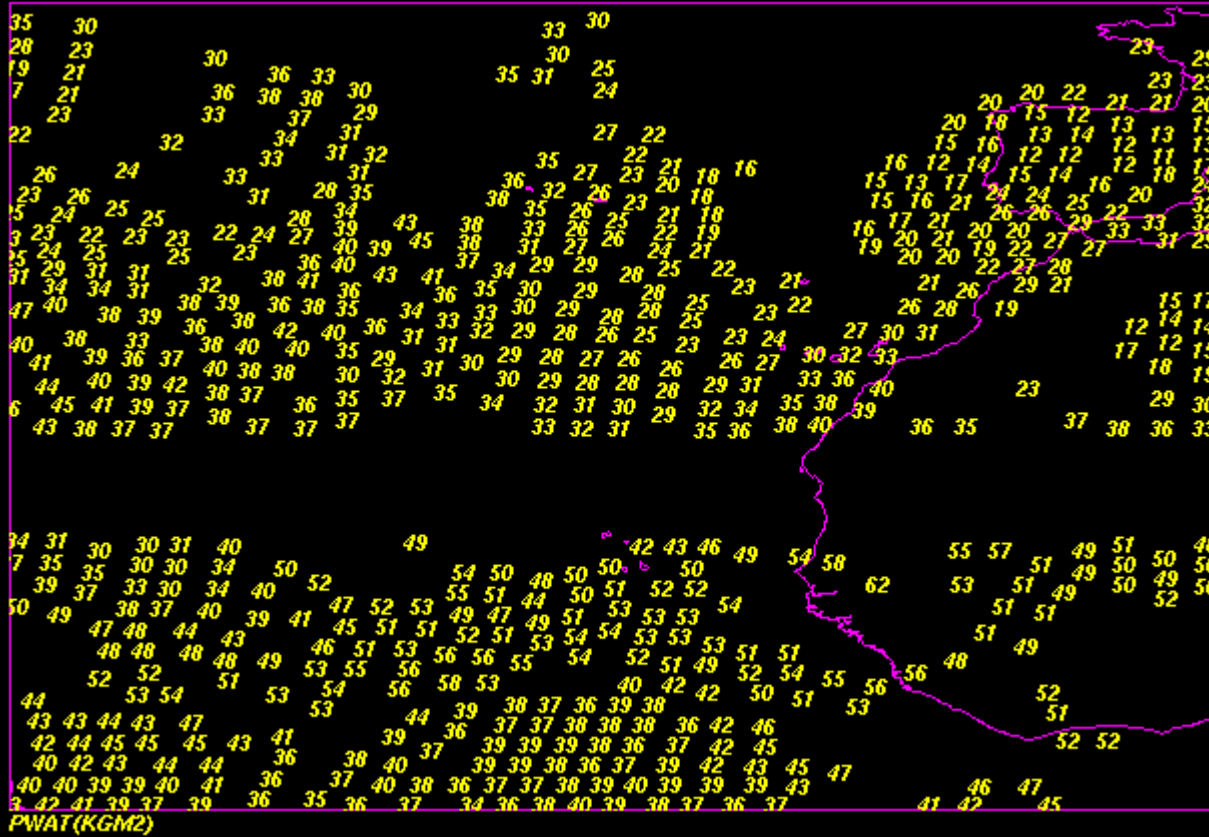
(Corrected reflectance)

- The corrected reflectance product is an atmospheric correction
- Does not remove aerosols
- Results in better true color composites

McIDAS-X 2008

- METAR cloud coverage definition
- BUFR server
- NOAAPORT Grid additions
- Tangent cone projection fixed

BUFR Server



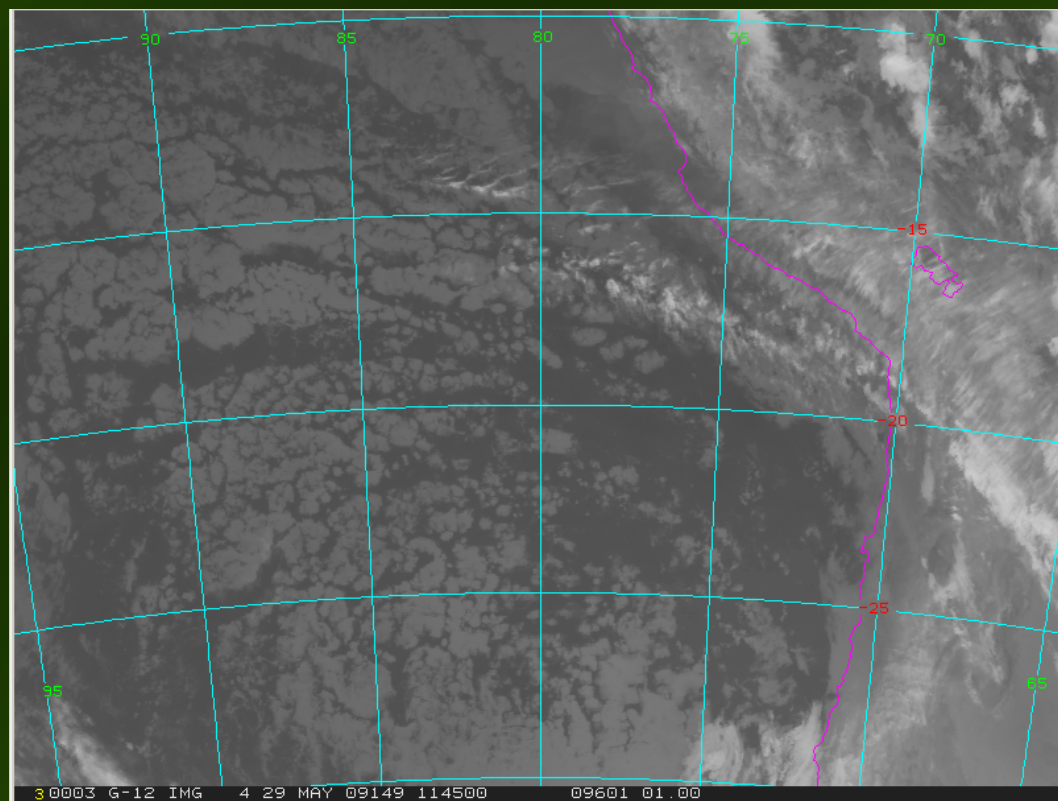
Dataset Names of Type: GRID in Group: RTGRIB2

Name	NumPos	Content
ALL	99999	All grids
DGEX-AKPS	99999	DGEX - Limited Domain Alaska/PS 12 km spacing
DGEX-ALL	99999	DGEX - All Downscaled GFS with ETA Extension grids
DGEX-USLC	99999	DGEX - Limited Domain CONUS/LC 12 km spacing
GFS-AKPS2	99999	GFS - Alaska/PS; unknown resolution
GFS-AKPSHRES	99999	GFS - Alaska/PS; high resolution
GFS-ALL	99999	GFS - All Global Forecast System grids
GFS-GLME0P5D	99999	GFS - Global/Merc; 0.5 deg resolution (.0p5deg files)
GFS-GLME1P0D	99999	GFS - Global/Merc; 1.0 deg resolution (.1p0deg files)
GFS-GLME2P5D	99999	GFS - Global/Merc; 2.5 deg resolution (.2p5deg files)
GFS-NHPS	99999	GFS - N Hemi/PS; forecast and analysis
GFS-PRME	99999	GFS - Puerto Rico/Merc
GFS-USLC2	99999	GFS - CONUS/LC; double resolution
GFS-USLCAWI4	99999	GFS - CONUS/LC; AWIPS 16X resolution
GFS-USPS2	99999	GFS - CONUS/PS; double resolution
GLW-UNKNME	99999	Great Lakes Wave Model; Unknown Mercator resolution
LMP-ALL	99999	LAMP - All Local AWIPS MOS Program grids
LMP-USLCAWI4	99999	LAMP - CONUS/LC; AWIPS 16X resolution
MGWM-AKME	99999	MGWM - Global Multi-Grid Wave Model - Alaska Coastline M
MGWM-ALL	99999	MGWM - All Global Multi-Grid Wave Model files
MGWM-ECGMME	99999	MGWM - Global Multi-Grid Wave Model - US East and Gulf C
MGWM-EPME	99999	MGWM - Global Multi-Grid Wave Model - Eastern Pacific Me
MGWM-GLME	99999	MGWM - Global Multi-Grid Wave Model - Global Mercator
MGWM-NPME	99999	MGWM - Global Multi-Grid Wave Model - North Pacific Merc
MGWM-WAME	99999	MGWM - Global Multi-Grid Wave Model - Western Atlantic M
MGWM-WCHIME	99999	MGWM - Global Multi-Grid Wave Model - US West Coast and
MGWM-WCME	99999	MGWM - Global Multi-Grid Wave Model - US West Coast Merc
NAM-AKPS45KM	99999	NAM - Alaska/PS; AWIPS (.awipak files)
NAM-AKPSAWI4	99999	NAM - Alaska/PS; AWIPS quad resolution
NAM-ALL	99999	NAM - All North American Mesoscale numerical model grids
NAM-USLC2	99999	NAM - CONUS/LC; double resolution
NAM-USLCAW12	99999	NAM - CONUS/LC; AWIPS 12 km (.awip218 and .awip12 files)
NAM-USLCAW20	99999	NAM - CONUS/LC; AWIPS 20 km (.awip20 and .icwf20 files)
NAM-USLCAW40	99999	NAM - CONUS/LC; AWIPS 40 km (.awip3d files)
NAM-USPS90KM	99999	NAM - CONUS/PS; 90 km spacing (.grbgrd files)
NDF-AKPS	99999	NDFD - Alaska Polar Stereographic
NDF-ALL	99999	NDFD - All National Digital Forecast Database grids
NDF-USLCAWI4	99999	NDFD - CONUS/LC; AWIPS 16X resolution
NMM-ALL	99999	NMM - All Non-hydrostatic Mesoscale Model grids
NMM-USLCAW40	99999	NMM - CONUS/LC; AWIPS 40 km spacing (.icwf3d files)
NMM-USLCAWI4	99999	NMM - CONUS/LC; AWIPS 16X resolution
PSS-AKPS	99999	PSS - Alaska Polar Stereographic
PSS-USLCAWI4	99999	PSS - CONUS/LC; AWIPS 16X resolution
RTM-AKPS	99999	RTMA - Alaska Polar Stereographic
RTM-ALL	99999	RTMA - All Real-Time Mesoscale Analyses grids
RTM-USLCAWI4	99999	RTMA - CONUS/LC; AWIPS 5 km
RUC-ALL	99999	RUC - All Rapid Update Cycle model grids
RUC-USLC13KM	99999	RUC - CONUS/LC; 13 km resolution
RUC-USLC20KM	99999	RUC - CONUS/LC; 20 km resolution (.sgrib20 files)
RUC-USLC40KM	99999	RUC - CONUS/LC; 40 km resolution (.sgrib files)
RUC-USLC80KM	99999	RUC - CONUS/LC; 80 km resolution
SREF-ALL	99999	SREF - All Short Range Ensemble Forecast model grids
SREF-EPME	99999	SREF - Eastern North Pacific Region
SREF-USLC2	99999	SREF - CONUS/LC; double resolution
SREF-USME	99999	SREF - US Mercator

NOAAPORT Grid Additions

Tangent Cone Projection Fixed

- Corrected for use in Southern Hemisphere



McIDAS-X 2009.1

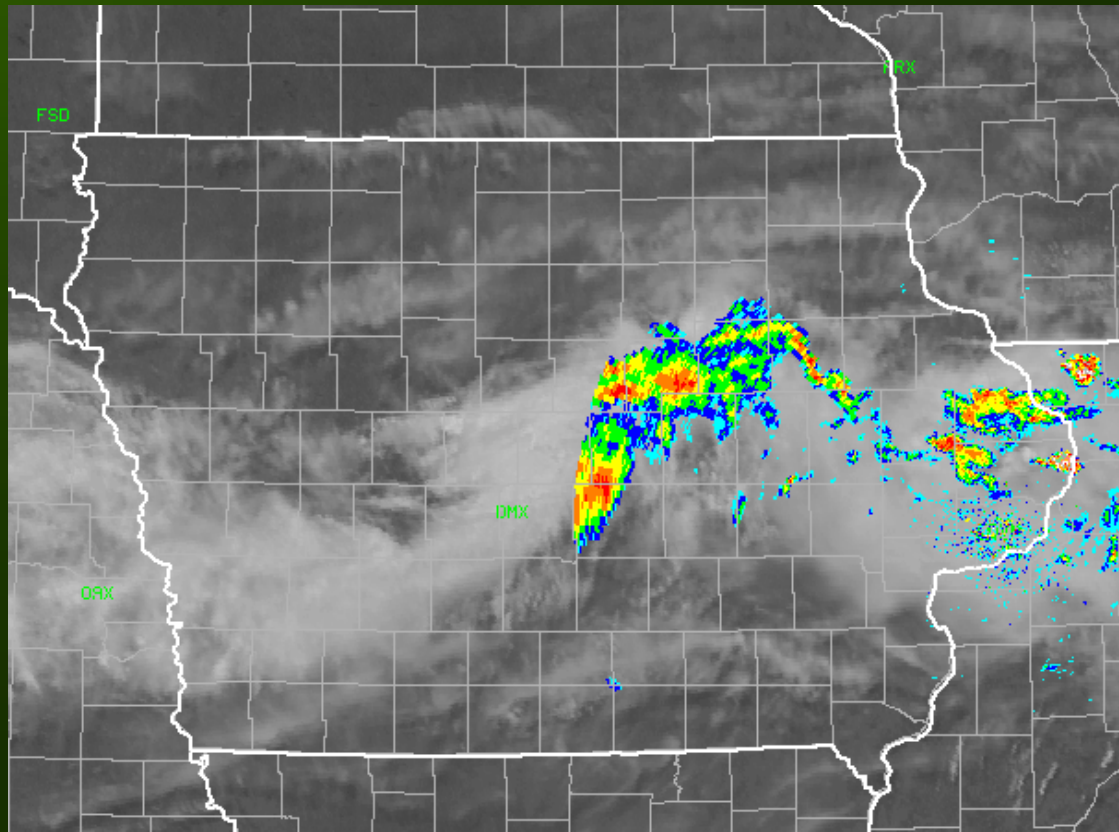
- GOES-13 calibration coefficients updated
- NOAA-19 updates
- MOSRPT defaults to GFS
- POES server returns navigation compatible with McIDAS-V (LALO navigation)

McIDAS-XRD 2009.1

- IMGGRA
- MAP2TEXT
- MCAWIPS
- AMRR server
- MODL server
- BEEP

IMGGRA

(Display image as a graphic)



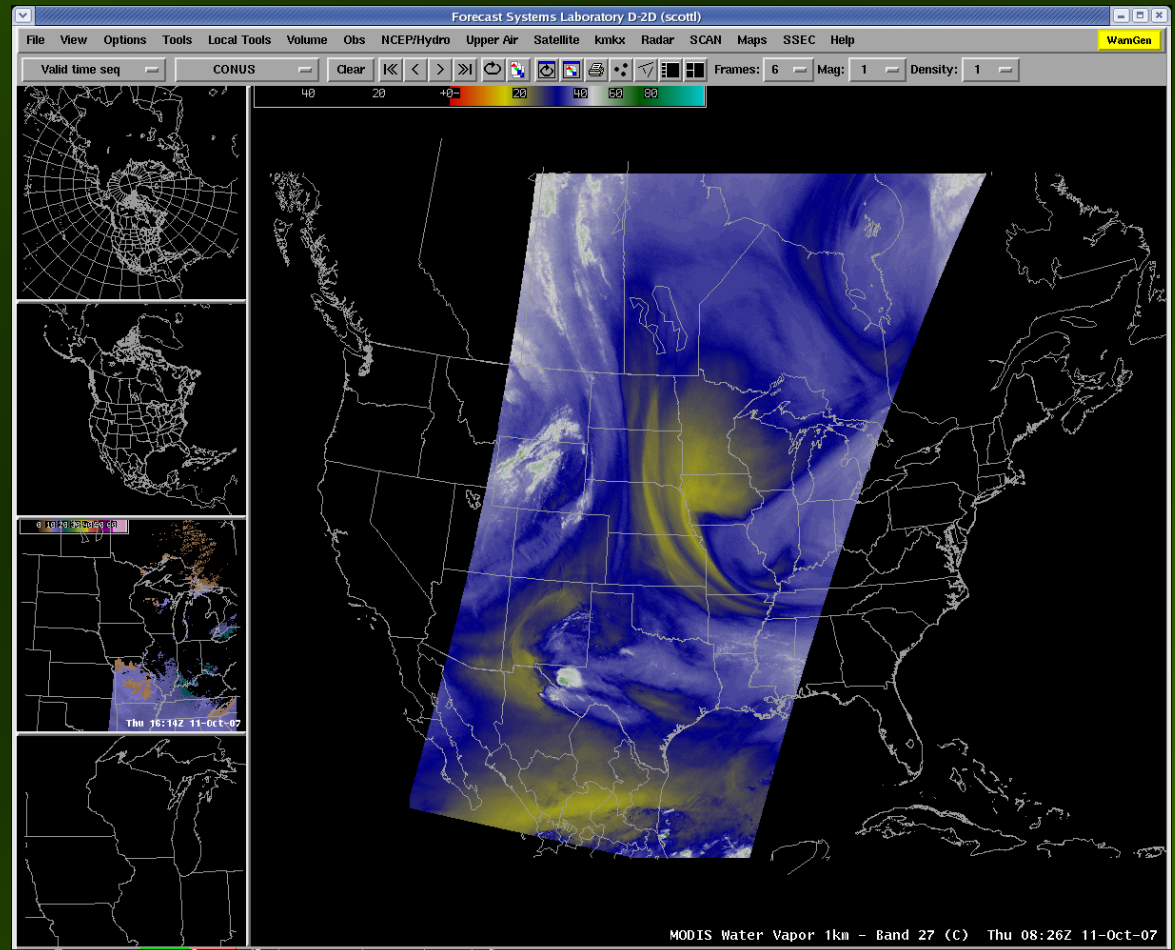
Radar graphic over visible image

MAP2TEXT

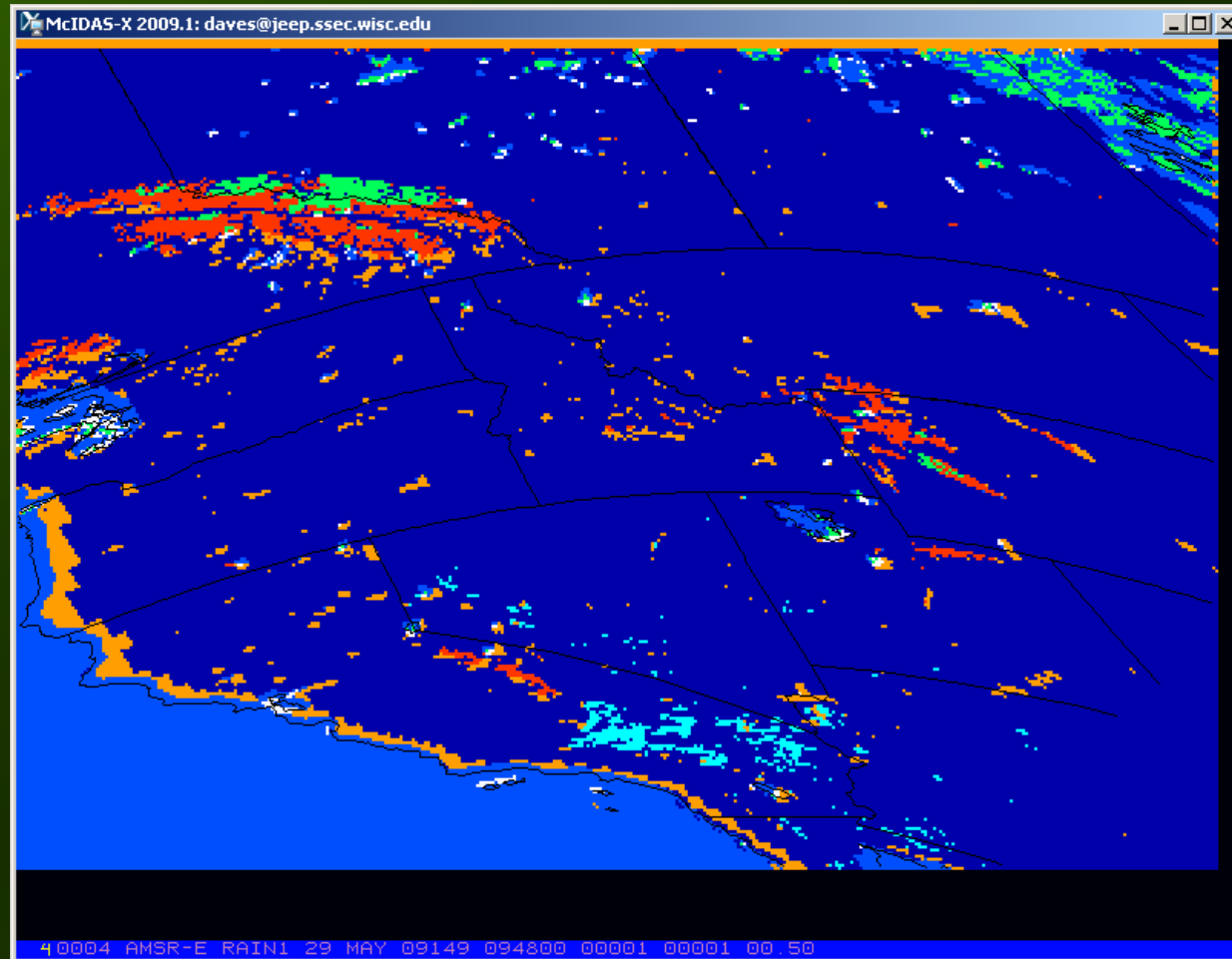
- Convert a McIDAS-X map file into a text file of a list of latitude/longitude segments
- This file can be edited and then converted back to a map file using MAKEMAP

MCAWIPS

- ADDE server writes out AWIPS-compatible netCDF files
- Products used throughout the NWS regions
- Capability first developed at MSFC

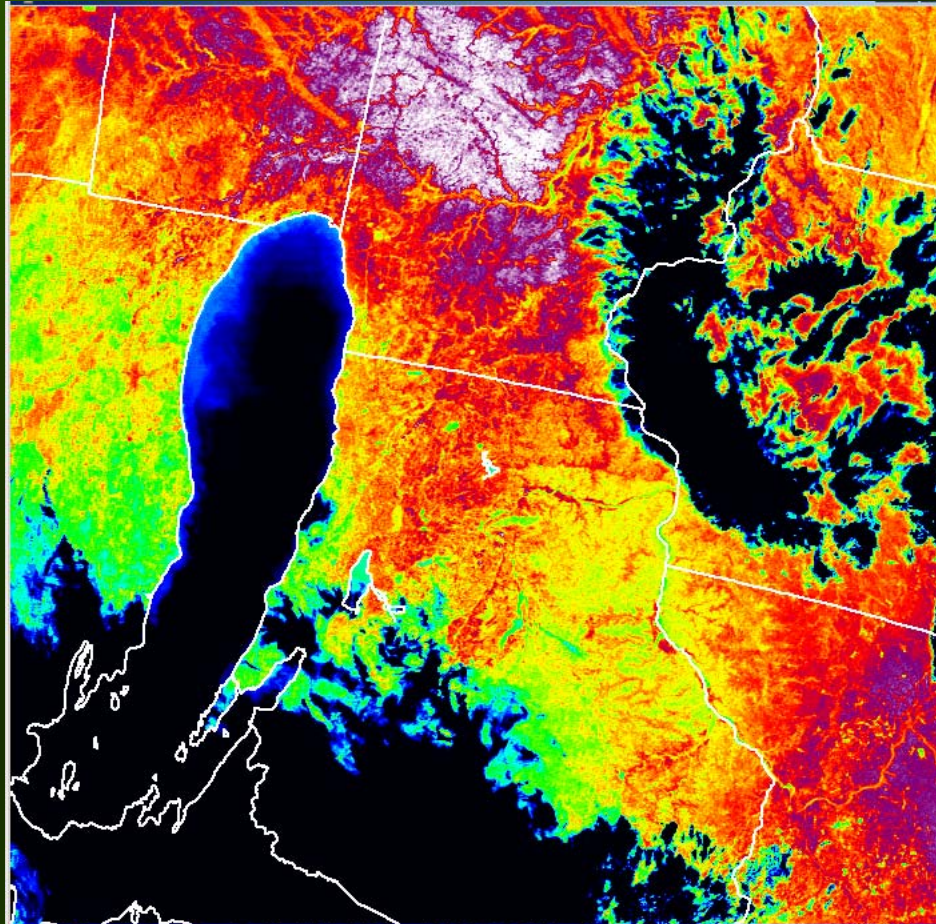


AMRR Server



AMSR-E Rainrate product

MODL Server



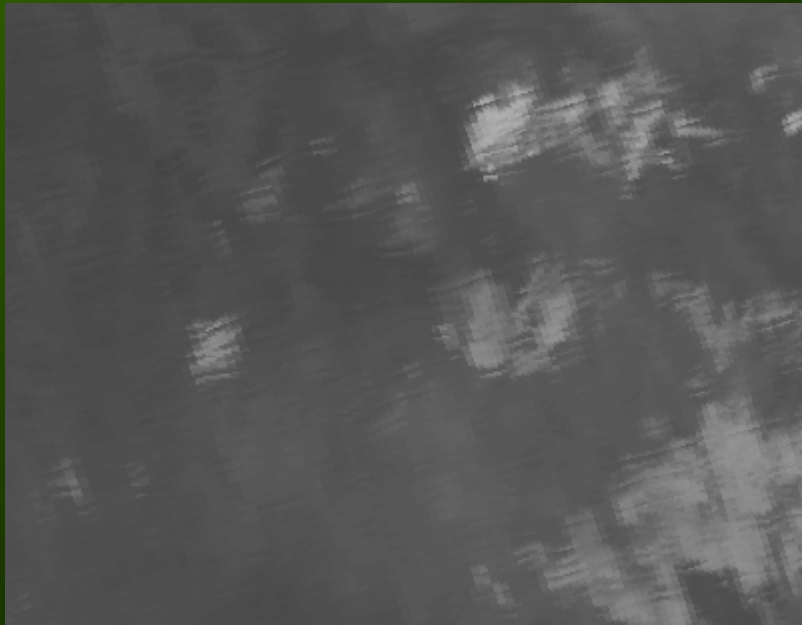
MODIS land surface temperature product

Software Plans for 2009

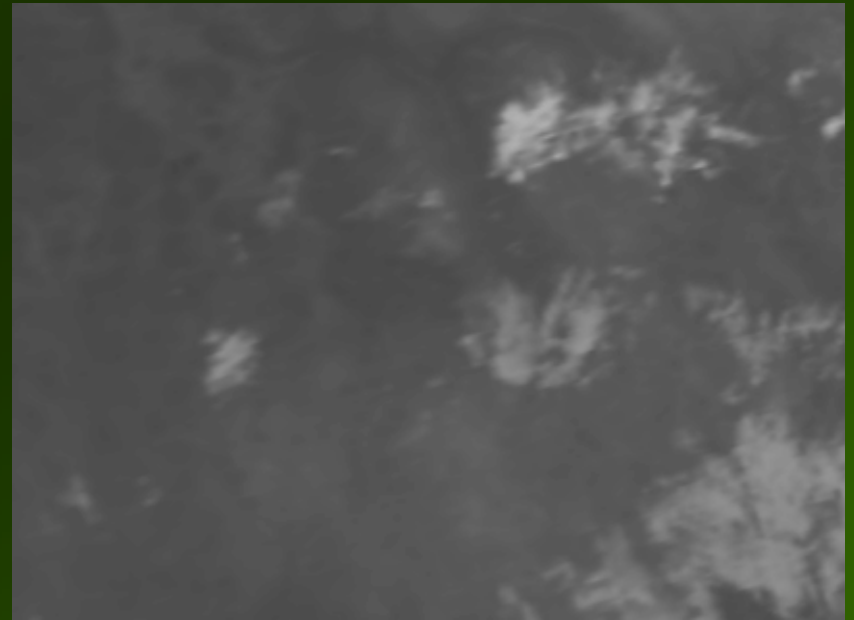
- **IMGCOPY**
 - Retain negative values when writing to netCDF file
 - Write McIDAS-V compatible netCDF files
- **SNDSKEWT** to work with GOES sounding retrieval files
- Ability to serve MSG HRIT files on AIX
- Replacement for IMGBOWTIE
- AVHRR Products from CLAVR-X (-XRD)

Bow tie correction

(correction for MODIS scanning)



IMGREMAP

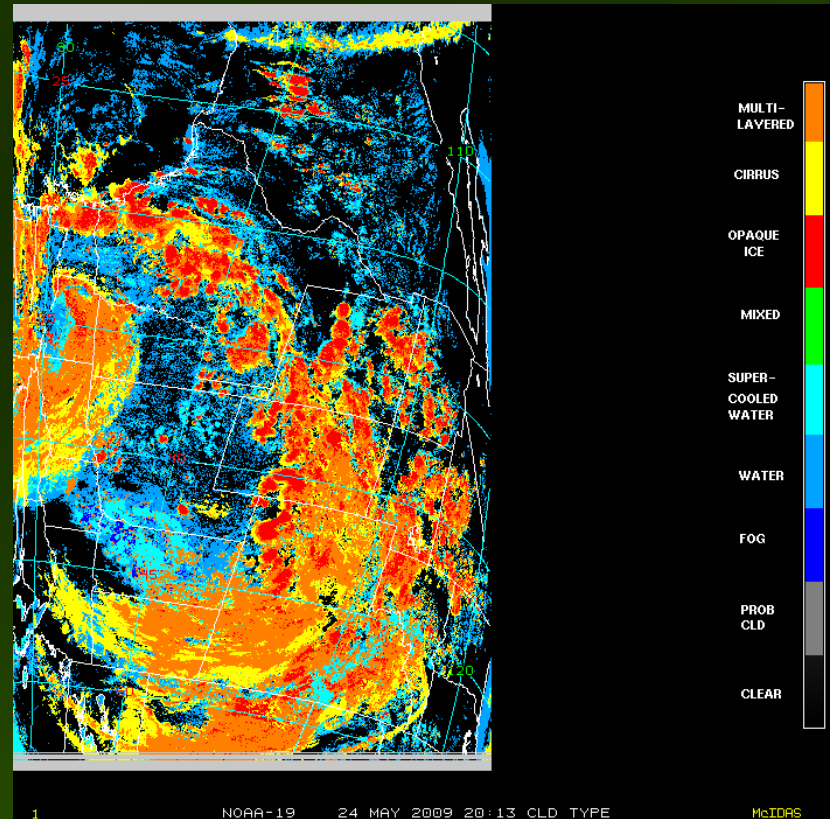
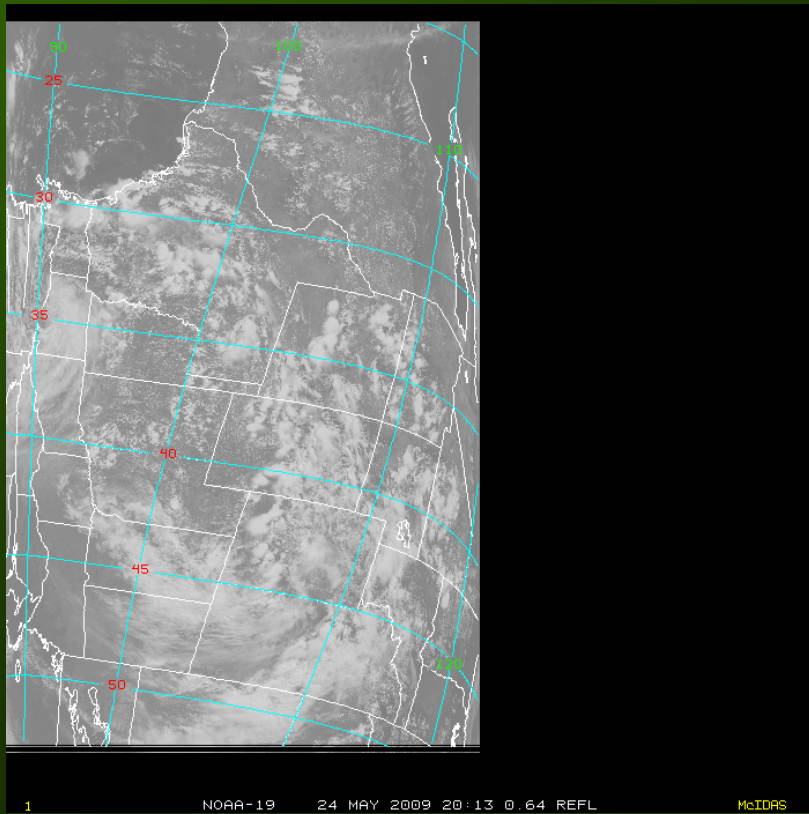


Bow tie corrected

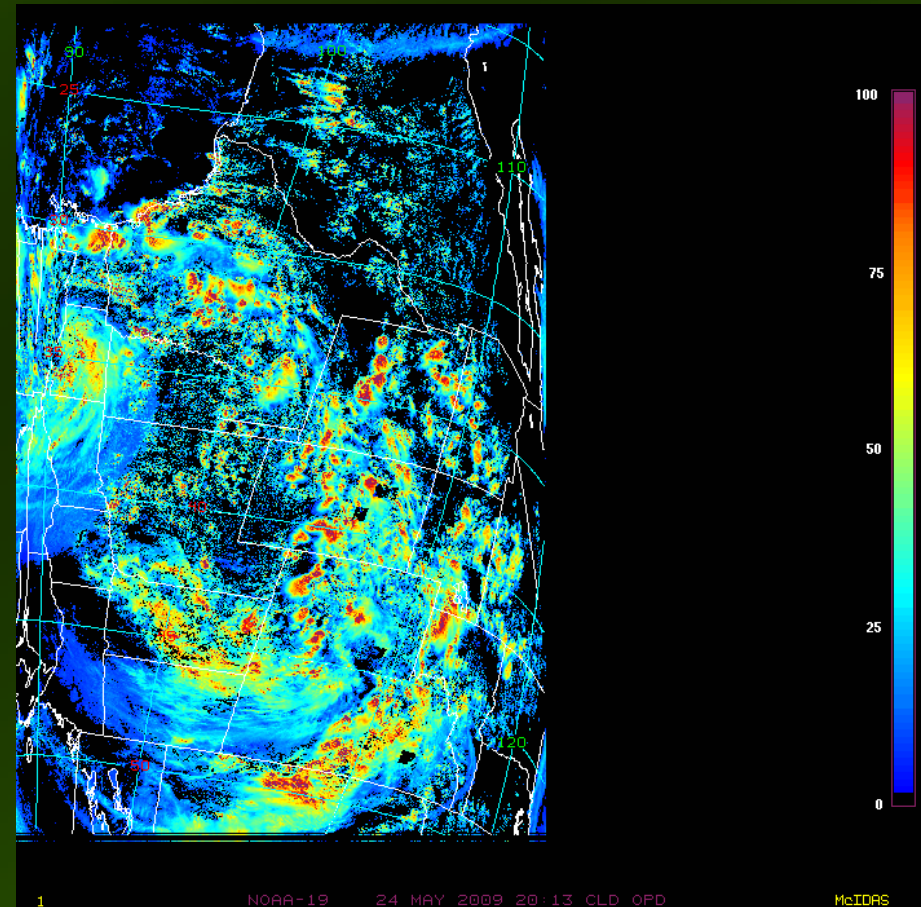
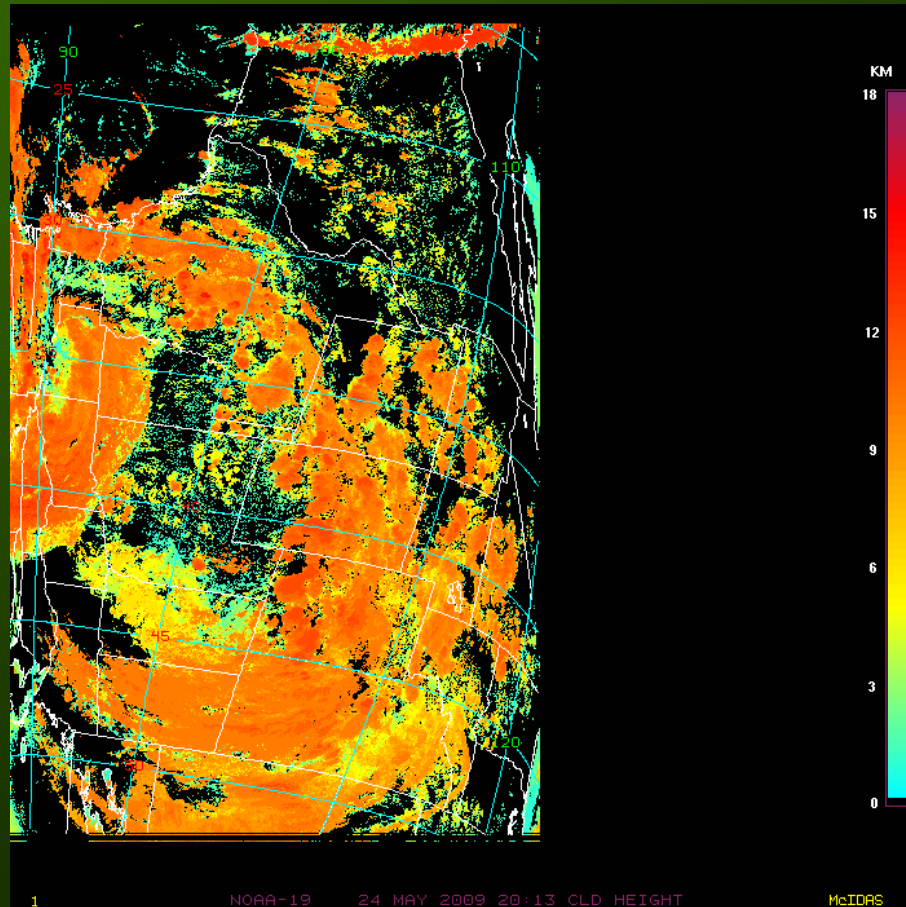
AVHRR Products

- Purpose: ADDE servers were developed to access products from Clouds from AVHRR Extended (CLAVR-x) for eventual transfer into AWIPS.
 - To provide forecasters with high (1km) resolution data from polar orbiters to supplement current MODIS data.
 - To have a tool for quick display of CLAVR-x products
- What is available
 - OBSX: Calibrated and navigated reflectances and brightness temperatures
 - SSTX: Masked SST and skin temperature
 - CLDX: Cloud type, height, temperature, optical depth and effective radius
 - ASHX: Volcanic ash detection, mass loading, etc. (in development)
- Contact:
 - Russ Dengel
 - William Straka III

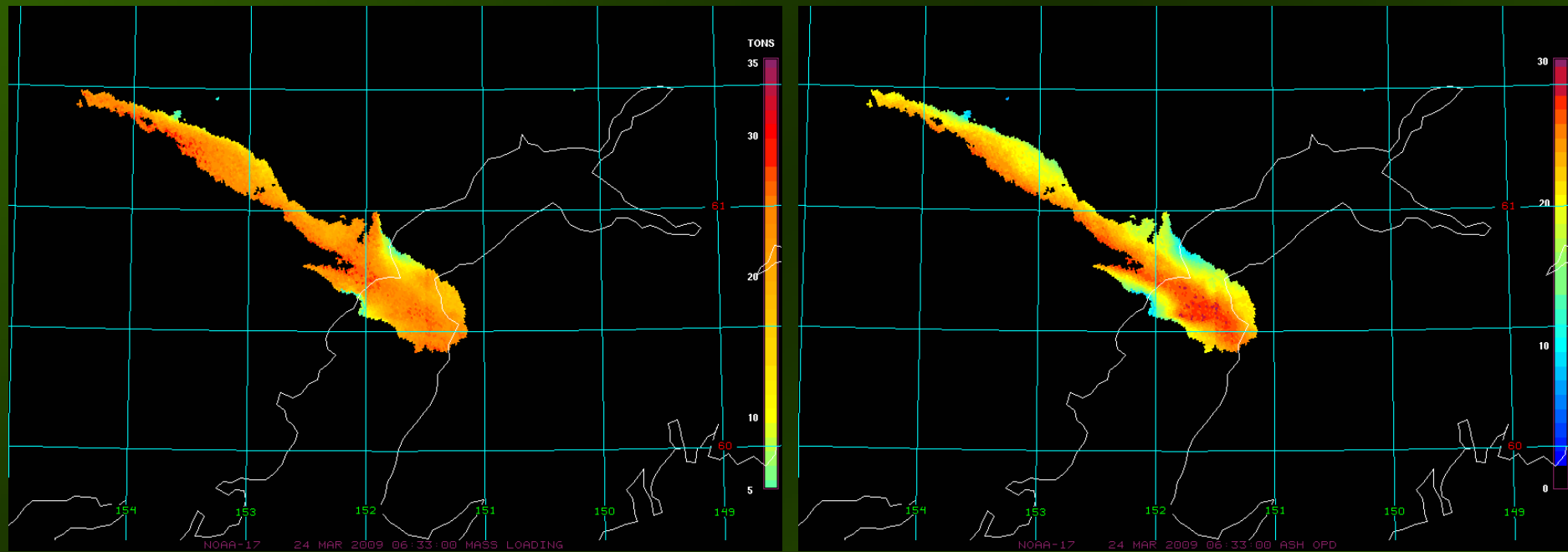
Visible and Cloud Type



Cloud Height and Optical Depth



Volcanic Ash



Redoubt, Alaska 24 March 2009

McIDAS-Lite and OpenADDE Status

- Neither has been updated in a couple years.
- A version of McIDAS-Lite continues to be included with the International MODIS/AIRS Processing Package (IMAPP) for visualizing MODIS products at Direct Broadcast reception sites.
- McIDAS-V replaces McIDAS-Lite
- OpenADDE will be phased out as new servers and data delivery methods are investigated as part of McIDAS-V.

PDA Animated Weather (PAW) Status

- 5,000,000 hits per month
- Google gadget available

The screenshot shows the iGoogle homepage in a Mozilla Firefox browser window. The browser's address bar displays the URL <http://www.google.com/ig?hl=en>. The iGoogle logo is prominently displayed in the center, with a search bar and buttons for "Google Search" and "I'm Feeling Lucky". Below the search bar, there are navigation links for "Home" and "Add a tab", and a "Select theme | Add stuff" link on the right.

The main content area features three gadgets:

- PAW Weather:** A weather radar map of the United States. The title bar reads "PAW Weather" and "PAW - SSEC, UW-Madison". It includes tabs for "Aust", "Enro", "Clouds", "Loop", "Alerts", and "Menu". The map shows a color-coded weather forecast. At the bottom, it indicates "REAL TIME Radar" and "FORECAST FRI OCT 12 12:15 PM (CDT)".
- Google Calendar:** A calendar for October 2007. The title bar reads "Google Calendar". The calendar shows the days of the month, with the 12th highlighted. Below the calendar is an "Add Event" link.
- Date & Time:** A gadget showing a clock face, the day "Fri", the month "OCT", and the date "12". It also displays a small grid of numbers for the month.

At the bottom of the page, there are links for "Create your own gadget" and "share it with friends.", "Advertising Programs - Business Solutions - Privacy Policy - Help - About Google - Mobile", and the copyright notice "©2007 Google".