

# SSEC Data Center Data

2010 MUG Meeting

Jerrold Robaidek

# Recent Data Center Activities



In the spring of 2010, SSEC added a new 6.3 meter heated C-Band antenna to the roof of the 15 story AOS building. It began collecting data in September 2010.

It will primarily be used for MTSAT, GILMORE Relay, and NOAAPORT, but can also be used for MSG, WALLOPS Relay.

# Recent Data Center Activities

- Hired Dee Wade to assist with old GOES data processing. (January 2010 )
- Moved NOAAPORT grid, GRIB, text and MD data from tape to online server. (completed Summer 2010)
- Expanded our current online storage capacity to over 1 Petabyte. (September 2010)
- Installed a fifty slot LTO-5 tape back up library. (October 2010)

# Real-time Datasets

# Current Real-Time Satellite Data availability

Geostationary									
US		Eumetsat		Japan		India		China	
Dataset	Delay	Dataset	Delay	Dataset	Delay	Dataset	Delay	Dataset	Delay
GOES-11 (WEST) GOES-13 (EAST) GOES-12 (SA) GOES-15 (TEST) (stopped 10/25/2010)	< 5 min	Meteosat-9 (Prime) Meteosat-7 (IODC)	<15 min	MTSAT-1R/2	<5 min	Kalpana1	2.5 - 5+ hours	FY-2D FY-2E	15-30 min
Polar									
NOAA POES (Wallops and Gilmore Creek DOMSAT Relays, and DDS)				EOS					
Dataset	Delay	Dataset	Delay	Dataset	Delay	Dataset	Delay	Dataset	Delay
NOAA-15 NOAA-16 NOAA-17 NOAA-18 NOAA-19	<u>GAC</u> 1.5 hours – 6+hours <u>HRPT</u> <20 minutes	AQUA TERRA	<30 min	METOP					1.5 hours – 6+hours

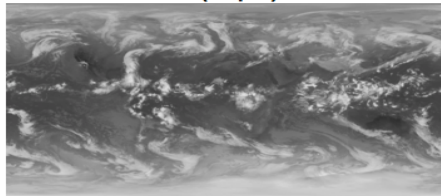
# Other Real-time ADDE Data Feeds

- NOAAPORT
- CONDUIT
- Custom products

# Custom Products

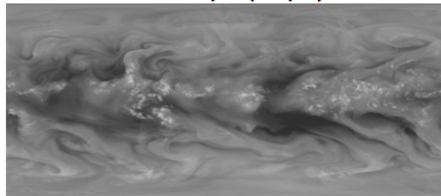
## SSEC Data Center Products

IR (11  $\mu\text{m}$ )



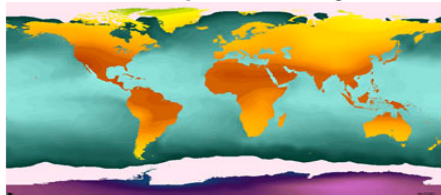
[large size](#)

Water Vapor (6.5  $\mu\text{m}$ )



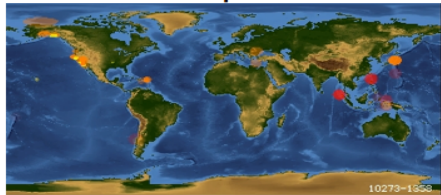
[large size](#)

Surface Temperature / Daily SST



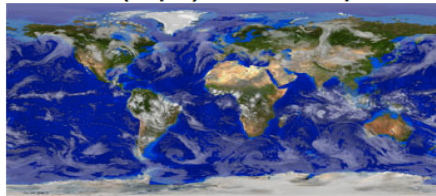
[large size](#) | [animation](#)

Earthquakes



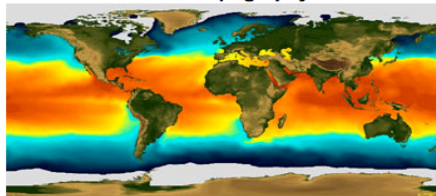
[large size](#) | [animation](#)

IR (11  $\mu\text{m}$ ) with Basemap



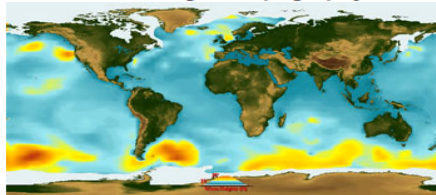
[large size](#) | [animation](#)

SST / Topography



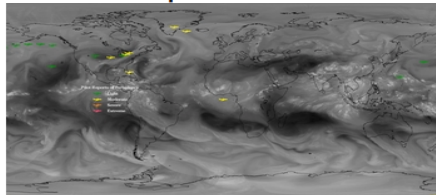
[large size](#) | [animation](#)

Wave Height / Topography



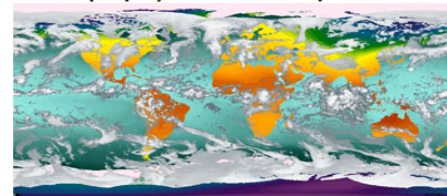
[large size](#) | [animation](#)

Water Vapor and Turbulence



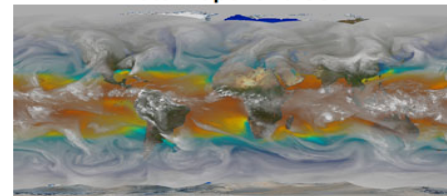
[large size](#) | [animation](#)

IR (11  $\mu\text{m}$ ) / Surface Temperature



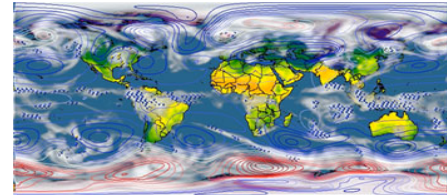
[large size](#) | [animation](#)

Water Vapor and SST



[large size](#) | [animation](#)

GFS Model Forecast



[large size](#) | [animation](#)

# Archive Data Status



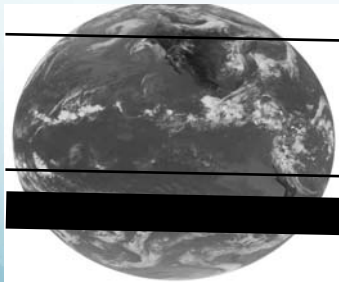
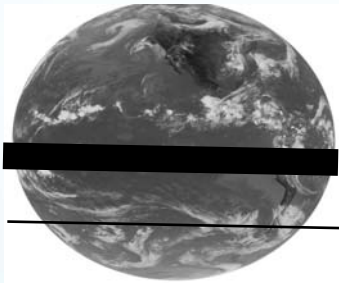
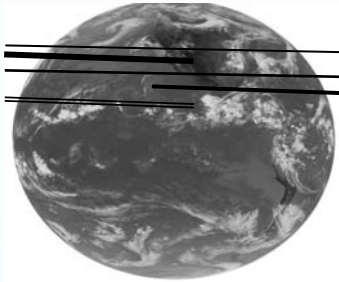
# Archive Data Status

Data	Time Period	Availability
TEXT	1996 - Present	ADDE
POINT	1976 - Present	ADDE
NOAAPORT GRIB	July 2003 - Present	THREDDS
NOAAPORT GRID	Sept 1996 – August 2004	THREDDS
Global Composite	June 2001 - Present	ADDE/THREDDS
Non-GOES (GMS, Meteosat, kalpana, MTSAT, FY2)	1998 - Present	ADDE
SMS1&2, GOES1-GOES7	1978 - 1996	ADDE (1 <sup>st</sup> quarter 2011)
GOES8 – GOES15	1994 - Present	ADDE

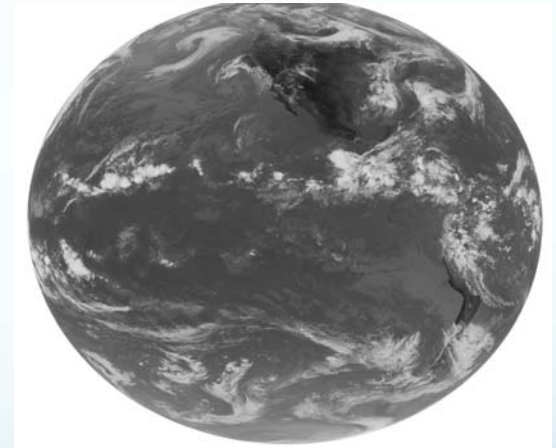
# Pre GVAR GOES Archive

- Covers period ~1978-1996 (SMS-1&2, GOES-1 – GOES-7)
- Data migrated from UMATIC to 3590. (GOES Data Rescue Project) A copy was sent to NCDC CLASS and is available from that system.
- Multiple copies, and missing, bad data.
- All data online. 85% processing to make it available via ADDE is complete.
- New ADDE servers were created.

# Getting a Best Copy



=



# New Archive Data Access Policy

# Free\* Archive Satellite Data to all active McIDAS-X Sites

- 5 GB limit per month
- Data available is 1 month old or older than current
- Must register User ID and IP address.
- 5GB shared by all IPs registered for a site
- Single/dual License site limited to 2 IP addresses
- Begins January 1, 2011

# Contacting the SSEC Data Center

- [dc@ssec.wisc.edu](mailto:dc@ssec.wisc.edu)
- <http://www.ssec.wisc.edu/datacenter>