

Welcome to Madison, WI and the University of Wisconsin-Madison Steve Ackerman





SSEC/CIMSS
University of Wisconsin - Madison



capitol





capitol



Staying longer....



The square....



SSEC/CIMSS
University of Wisconsin - Madison

Finer Cuisine

Brats.....





Babcock ice cream – yummmm

Available in the Union





Try em fried too!!





WI BEER

**Leinenkugel's®
Creamy Dark**

Available year-round and aged slowly, Leinenkugel's most award-winning beer has received 7 awards in American Dark Lagers (Bronze 2004, Gold 2002, Silver 2000 World Beer Cup®, Gold 2006, 2005, Silver 2002, Bronze 2004 Great American Beer Festival®) and has the full, deep blackish-brown color of a stout, without its bitterness. Don't let the color fool you. This is a tasty, smooth brew with a nutty, crisp finish, handcrafted since 1999 from a rich blend of six malts and Cascade, Cluster and Mt. Hood hops.

Available on draft or in:

- Six-pack long-neck bottles or by the case
- 12-pack long-neck bottles



SSEC/CIMSS
University of Wisconsin - Madison

Lutefisk Supper, Norwegian dinners





Happy Notes. Photo courtesy of Norm Dombrowski.

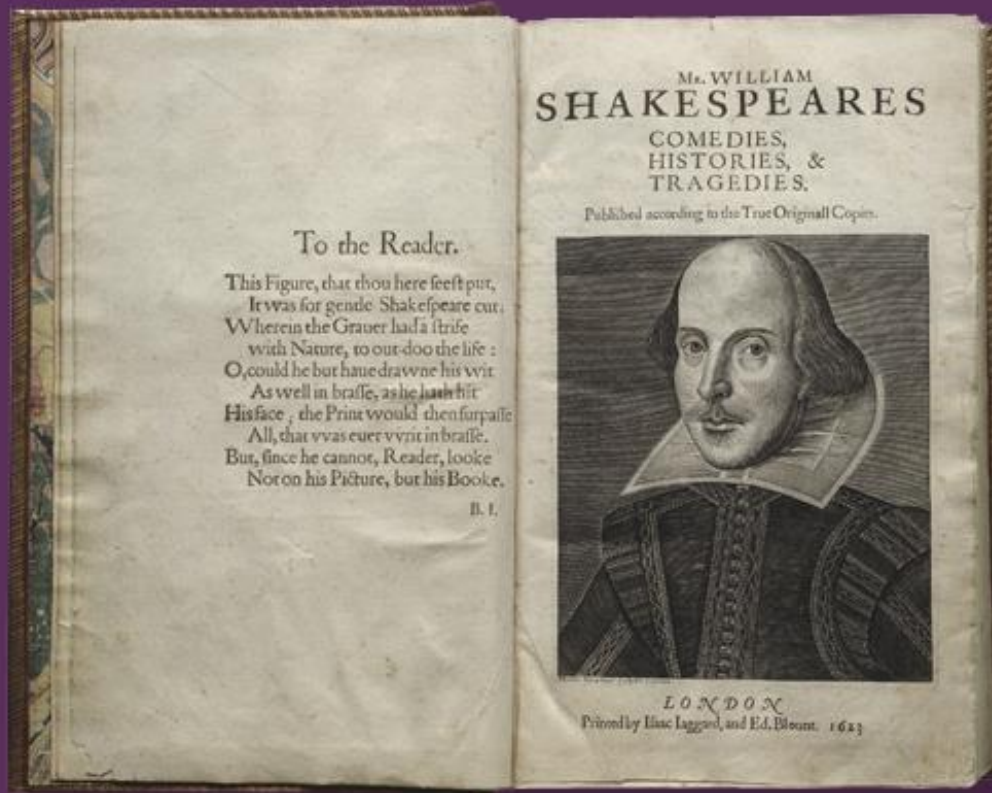


Sports



SSEC/CIMSS
University of Wisconsin

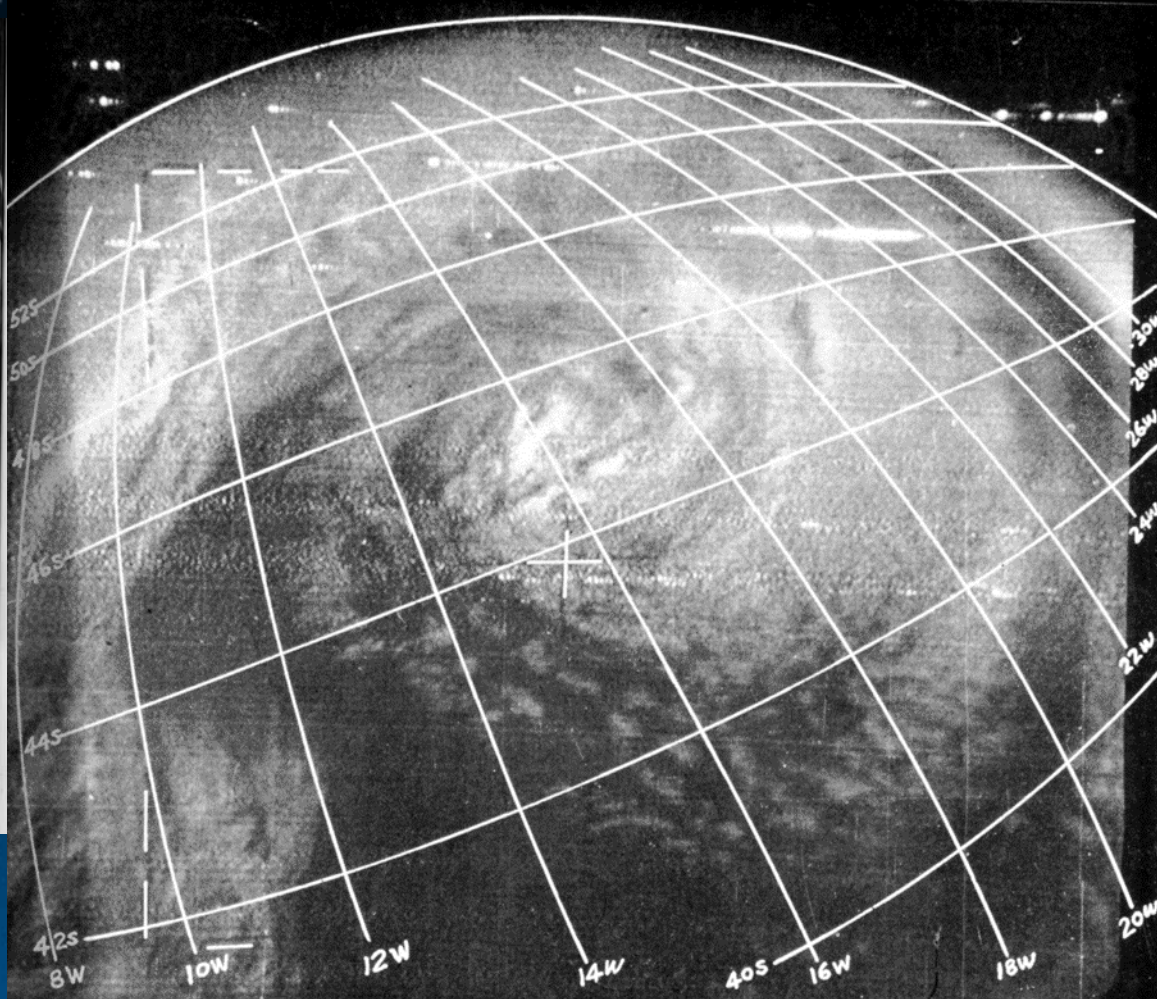
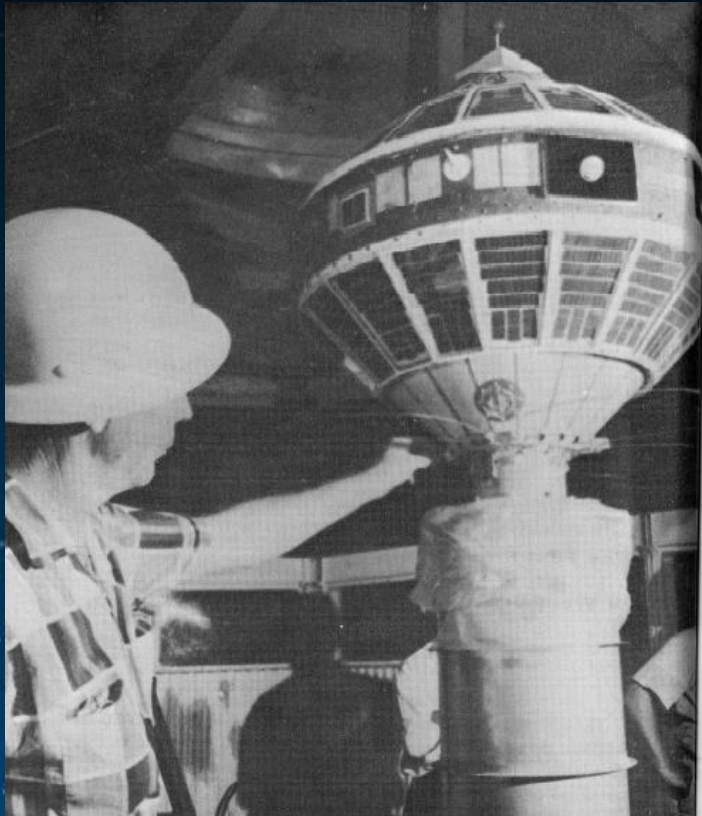
The Chazen Museum



The Book that Gave
Us Shakespeare
on tour from the
Folger Shakespeare
Library



Our History....



McIDAS & McIDAS-V



Welcome! Enjoy!



SSEC/CIMSS
University of Wisconsin - Madison