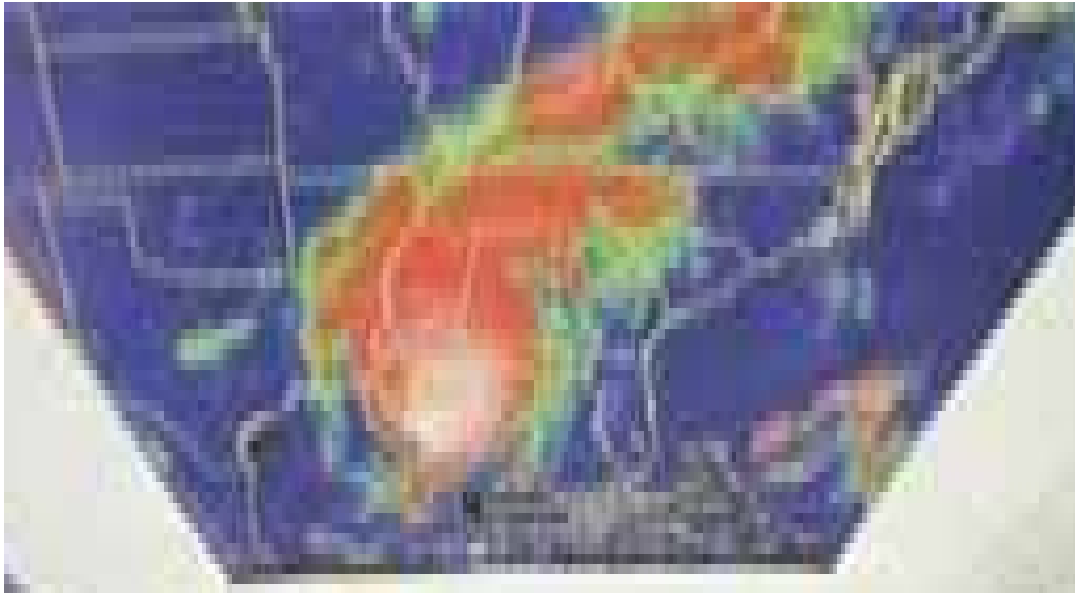


A satellite image of Hurricane Katrina, showing a well-defined eye and spiral cloud bands. The image is in grayscale, typical of meteorological satellite data. The hurricane is centered in the lower-middle portion of the frame. The text "McIDAS View of Hurricane Katrina" is overlaid in large, bold, black font across the center of the image.

# McIDAS View of Hurricane Katrina





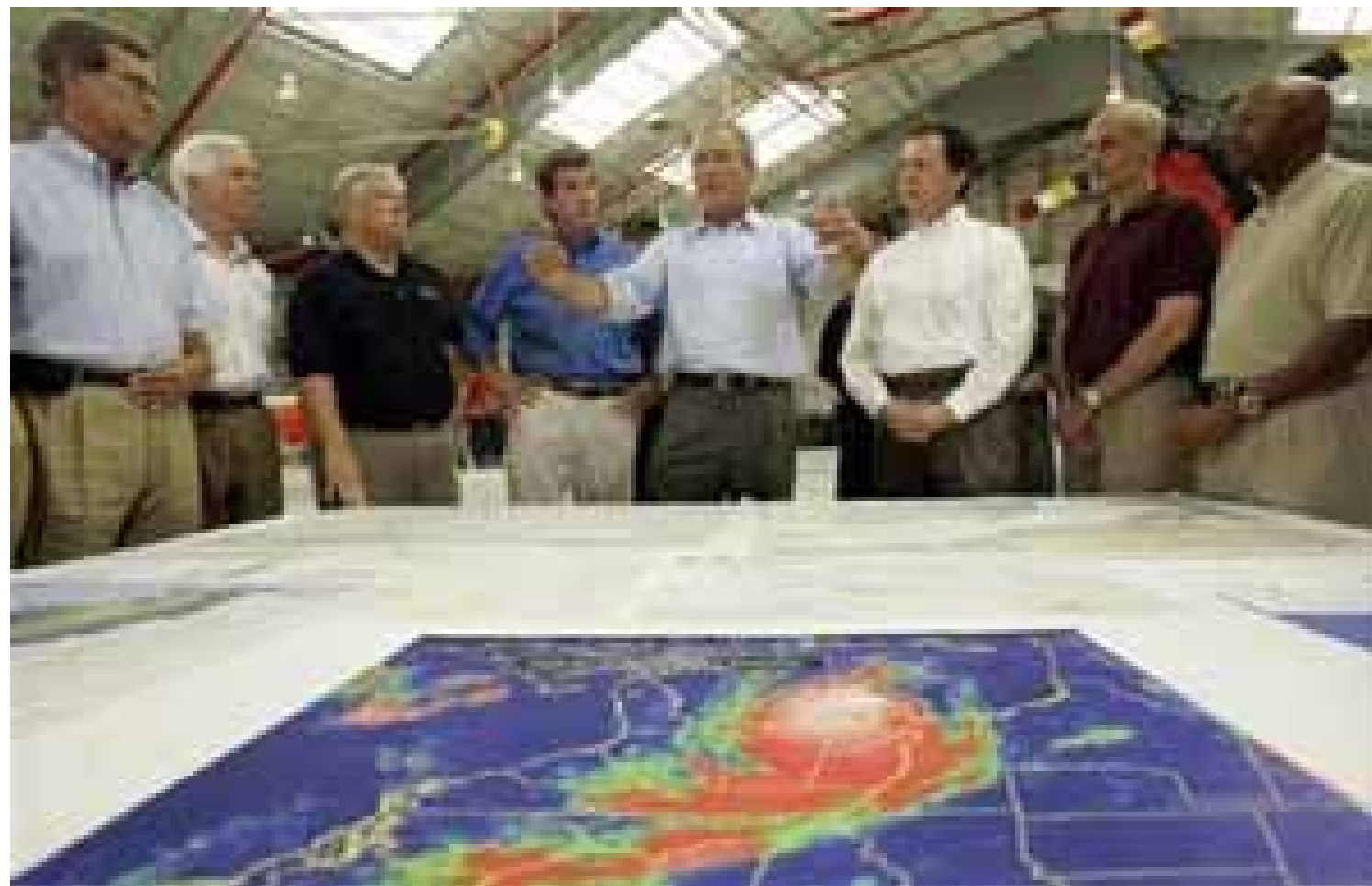
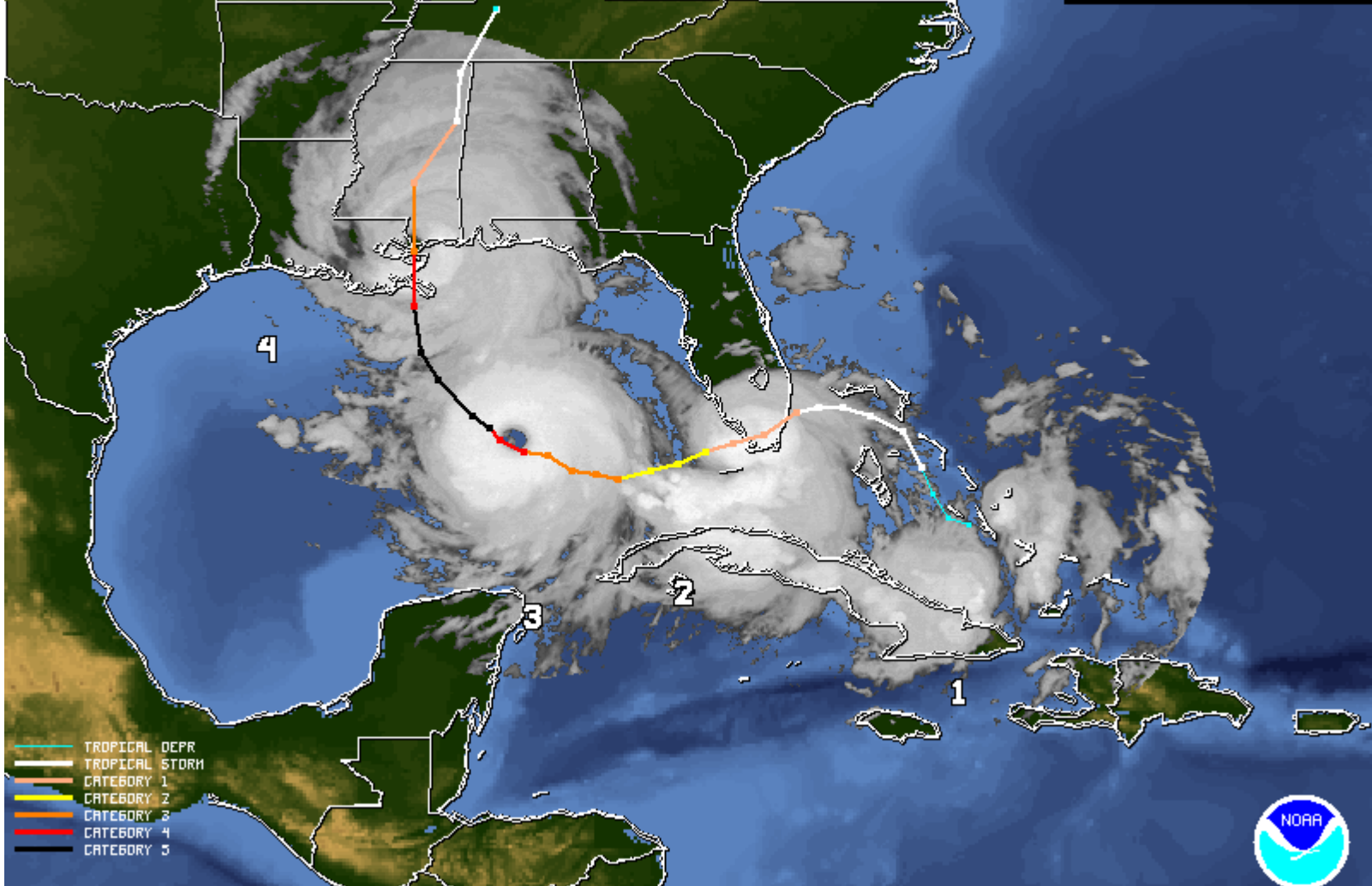




Image Index  
1: 2005AU623/21: 15: 00UTC  
2: 2005AU626/06: 15: 00UTC  
3: 2005AU628/07: 15: 00UTC  
4: 2005AU629/14: 45: 00UTC



- TROPICAL DEPR
- TROPICAL STORM
- CATEGORY 1
- CATEGORY 2
- CATEGORY 3
- CATEGORY 4
- CATEGORY 5

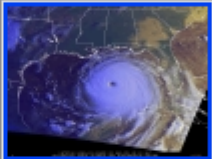







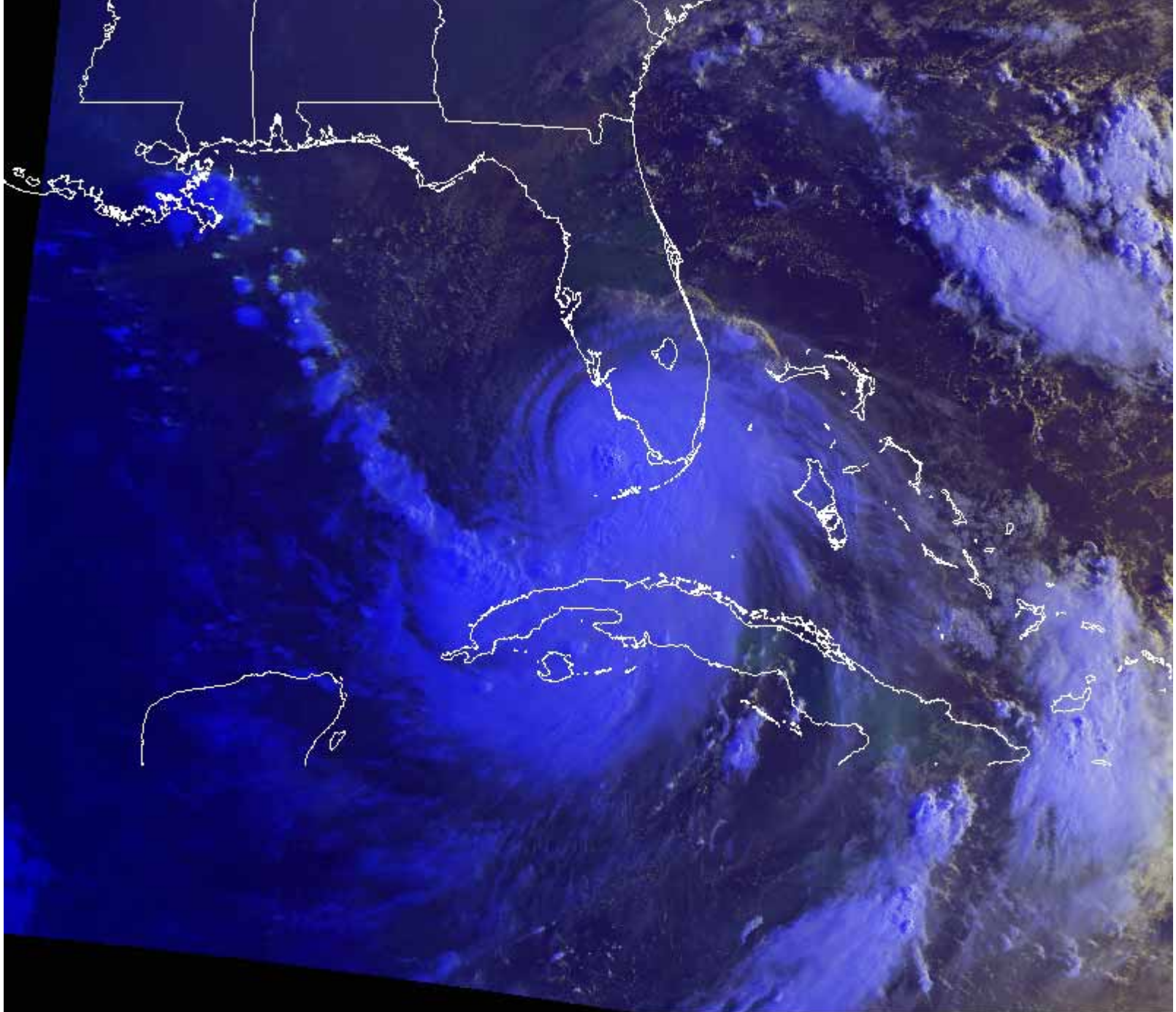
# AVHRR/MVISR Composite Imagery

*composite of Bands 1, 2, and 4*

Images updated at 1700UTC and 2300UTC

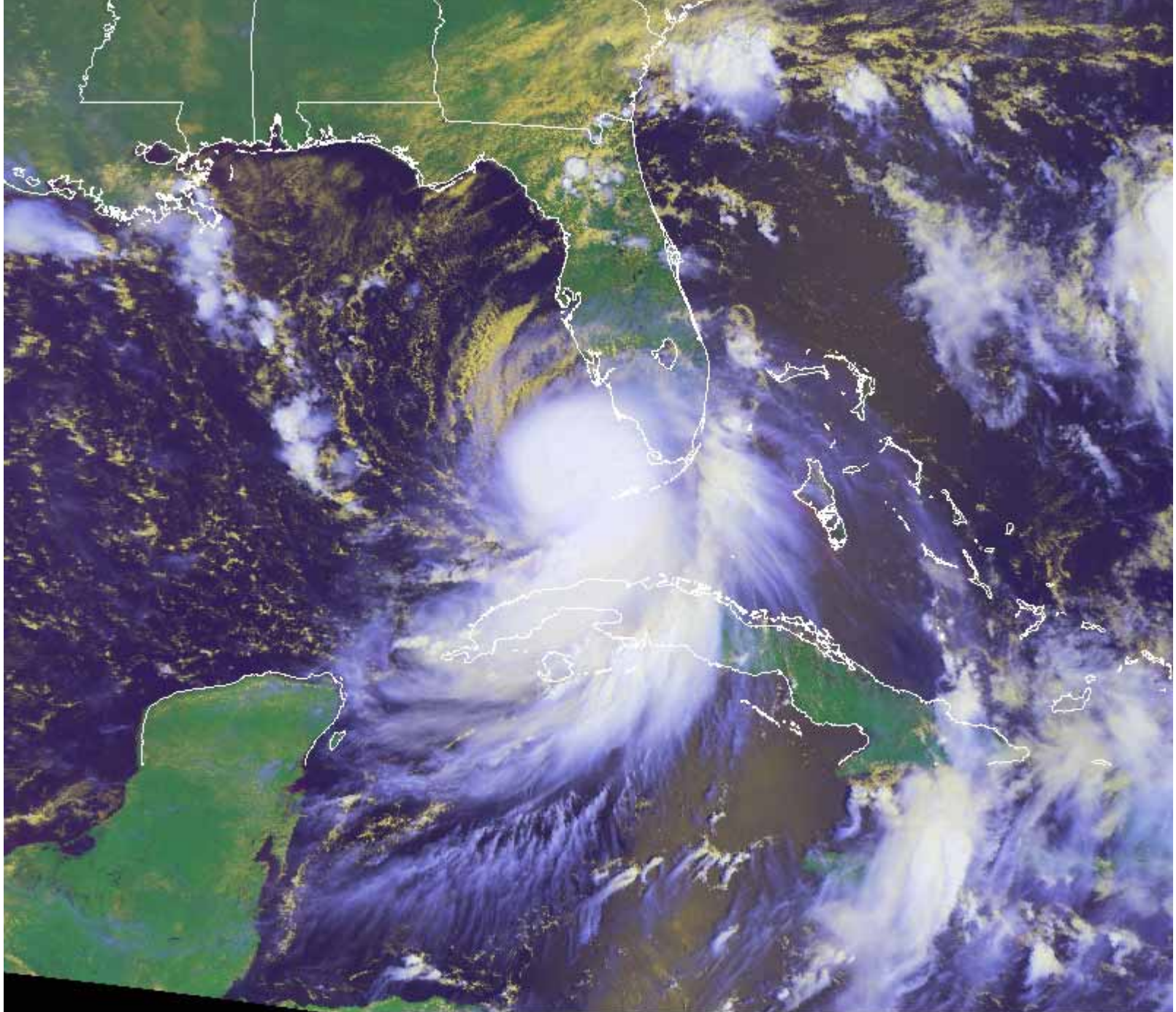
*(scripts to obtain and process data courtesy Dave Santek-UW/SSEC)*

<b>NOAA-15</b>	Latest Available	Previous-1
		
	<a href="#">Zoom</a>	<a href="#">Zoom</a>
<b>NOAA-16</b>	Latest Available	Previous-1
		
	<a href="#">Zoom</a>	<a href="#">Zoom</a>
<b>NOAA-17</b>	Latest Available	Previous-1
		
	<a href="#">Zoom</a>	<a href="#">Zoom</a>



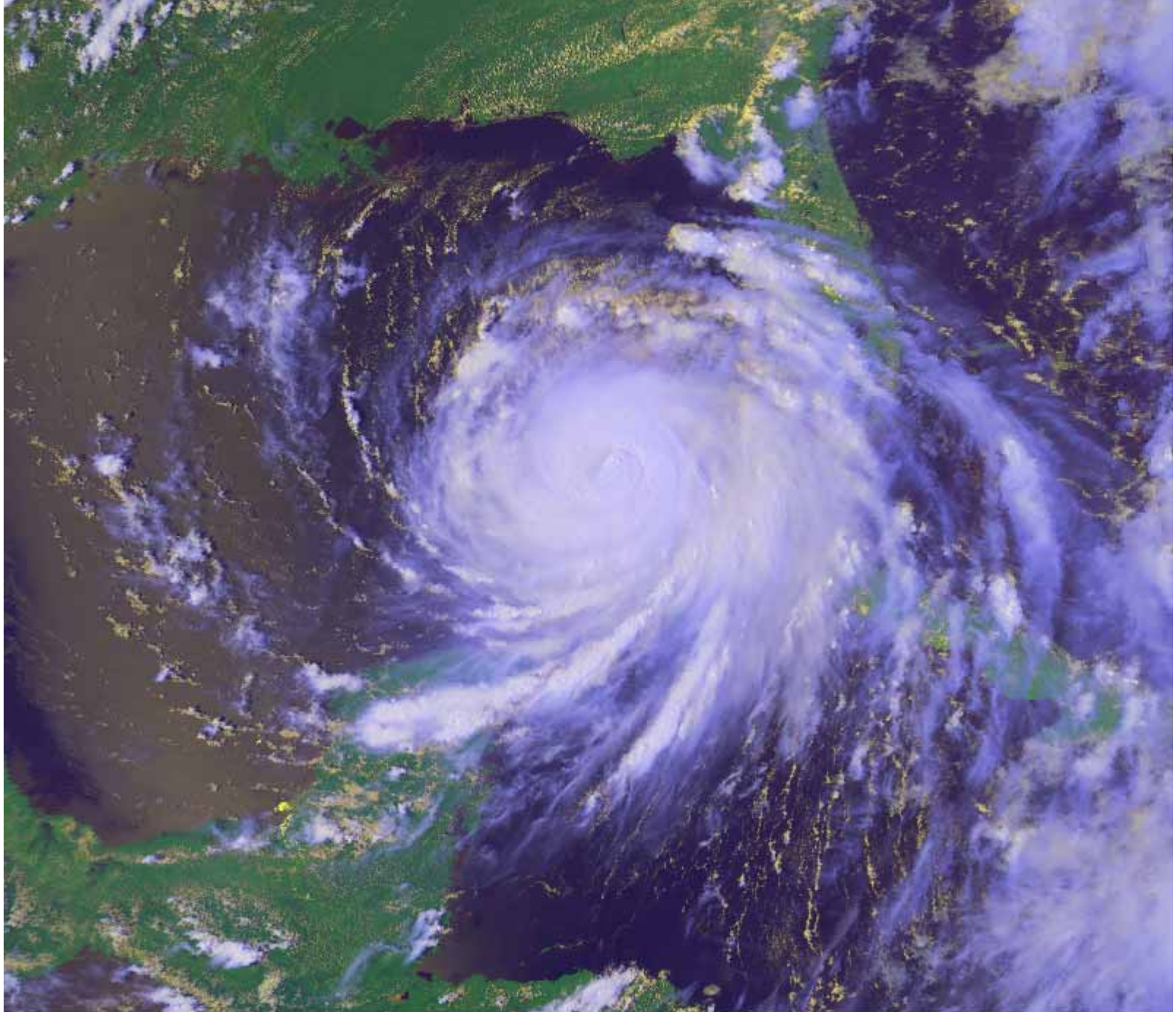
KATRINA NOAA-15 AVHRR 26 AUG 05 11:27 GMT  
UW-MADISON SPACE SCIENCE AND ENGINEERING CENTER

McIDAS

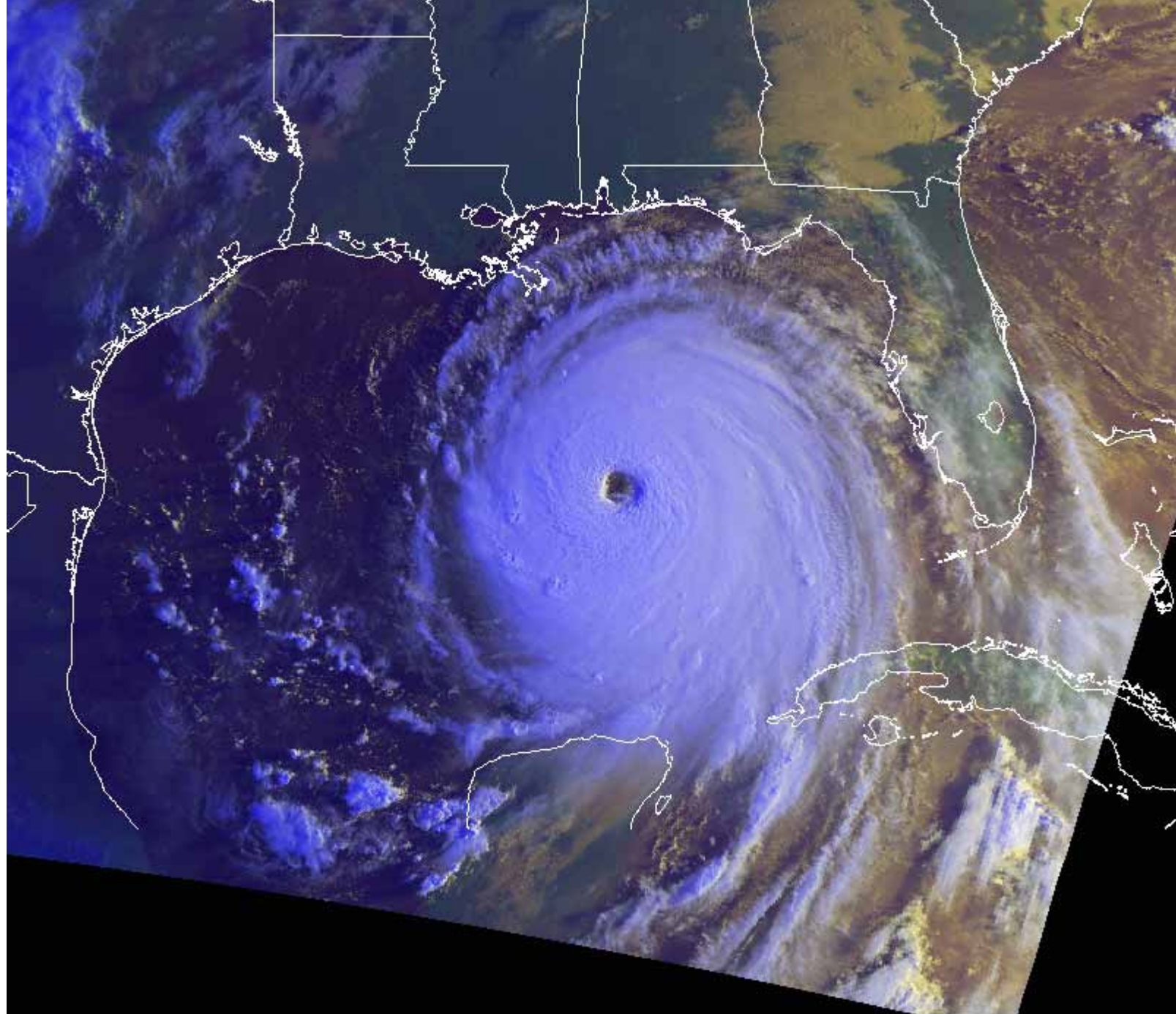


KATRINA NOAA-17 AVHRR 26 AUG 05 16:00 GMT  
UW-MADISON SPACE SCIENCE AND ENGINEERING CENTER





KATRINA NOAA-16 AVHRR 27 AUG 05 20:21 GMT  
UW-MADISON SPACE SCIENCE AND ENGINEERING CENTER



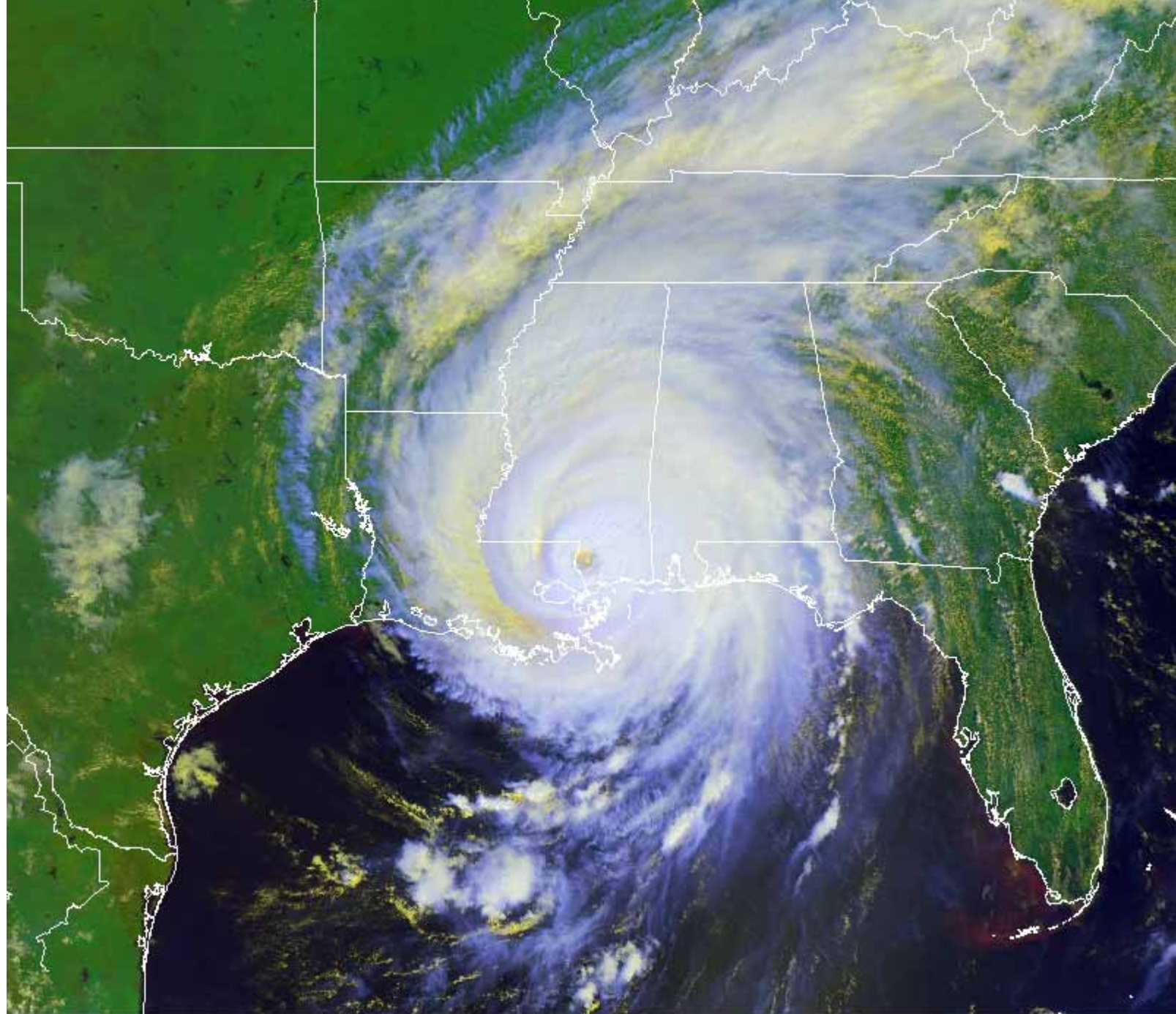
KATRINA NOAA-15 AVHRR 28 AUG 05 12:19 GMT  
UW-MADISON SPACE SCIENCE AND ENGINEERING CENTER

McIDAS



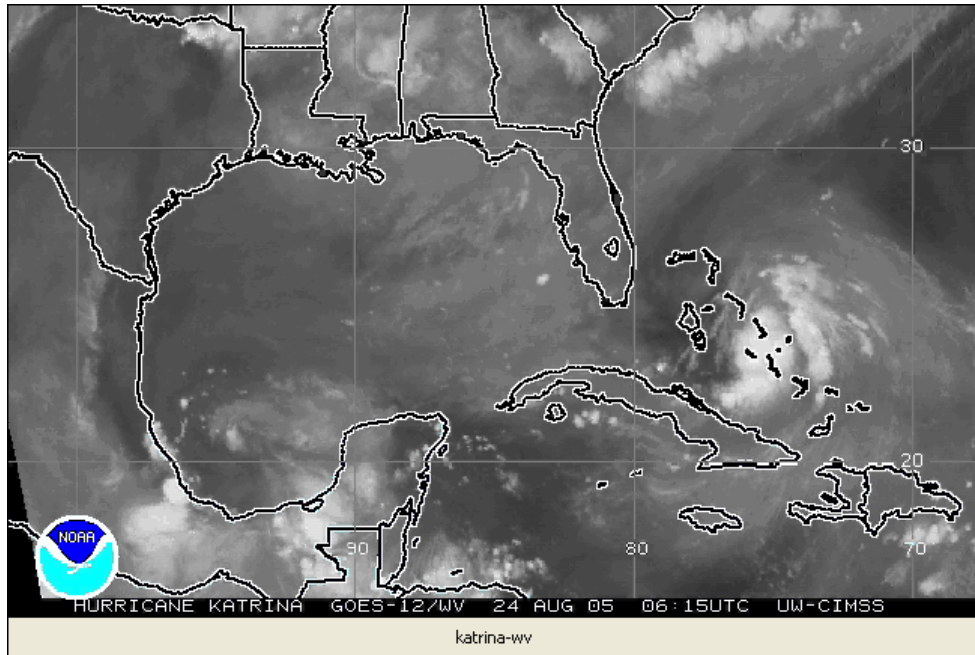
KATRINA NOAA-16 AVHRR 28 AUG 05 20:11 GMT  
UW-MADISON SPACE SCIENCE AND ENGINEERING CENTER

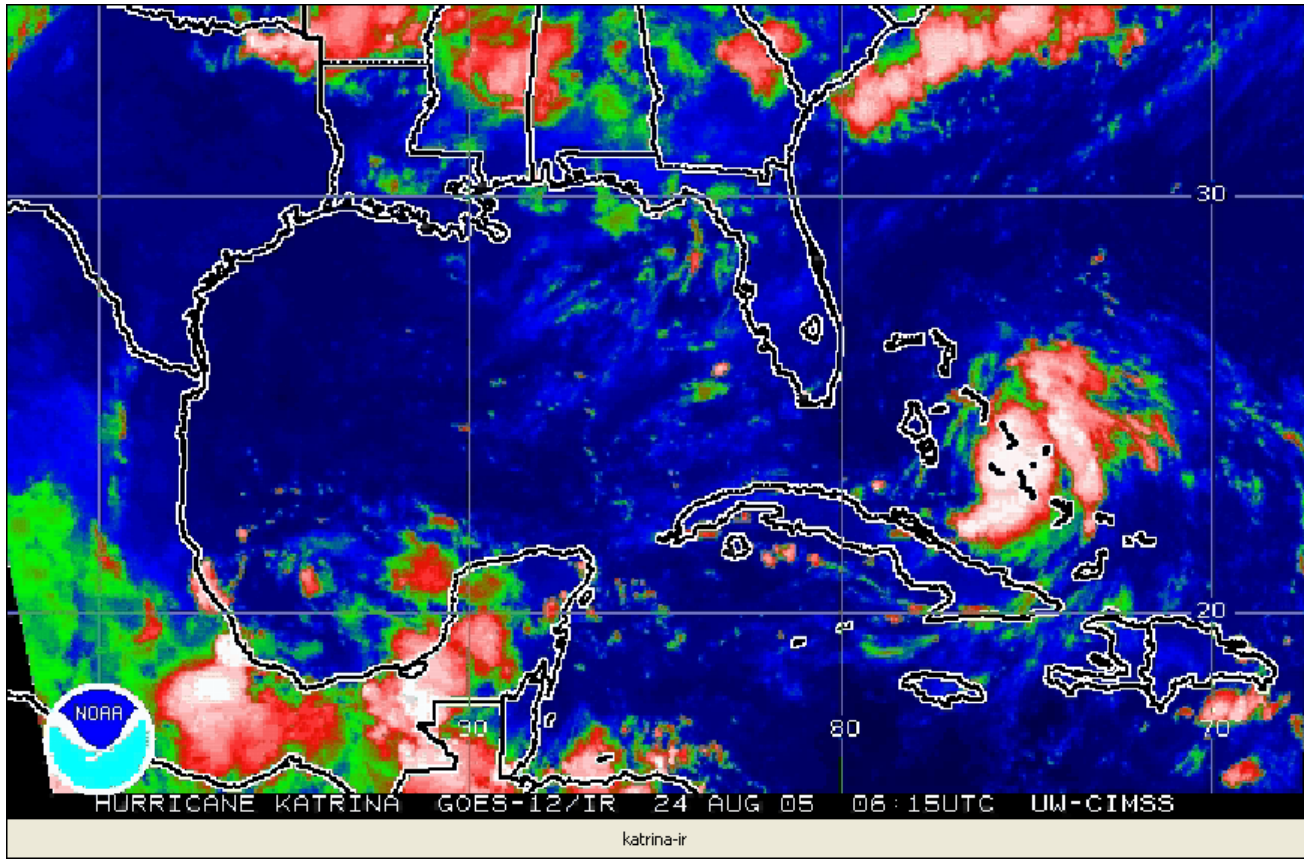
McIDAS

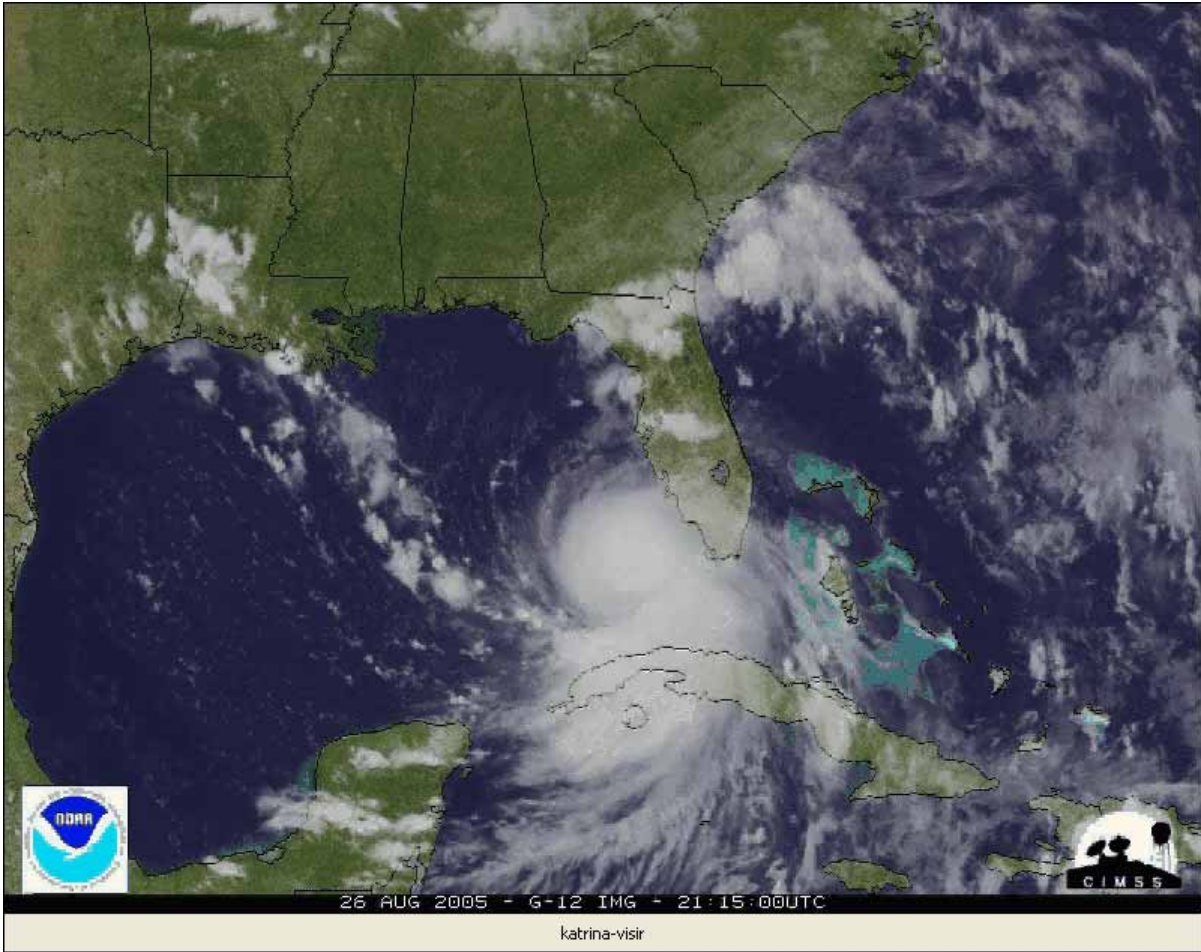


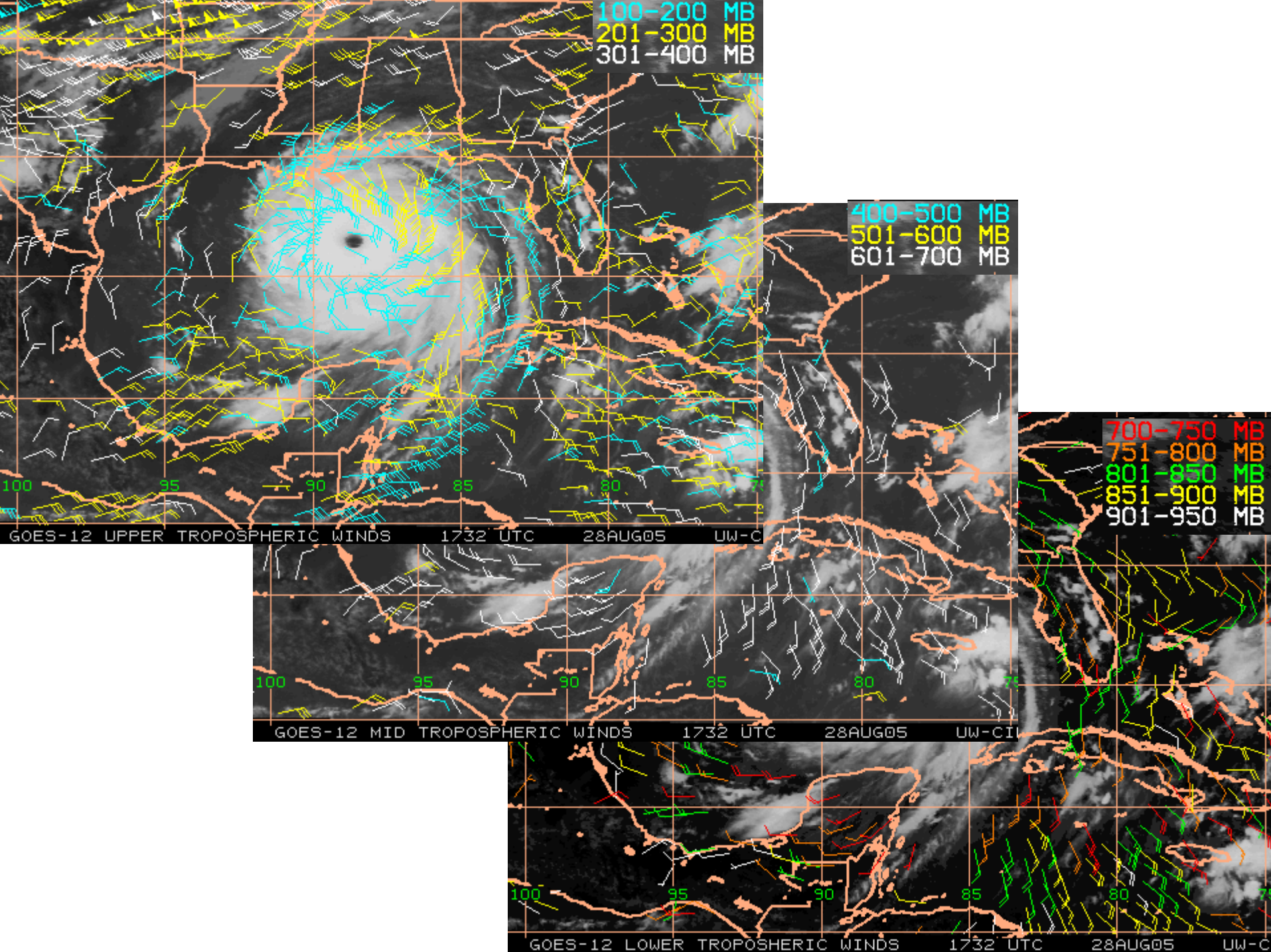
KATRINA NOAA-17 AVHRR 29 AUG 05 16:30 GMT  
UW-MADISON SPACE SCIENCE AND ENGINEERING CENTER

MCIDAS

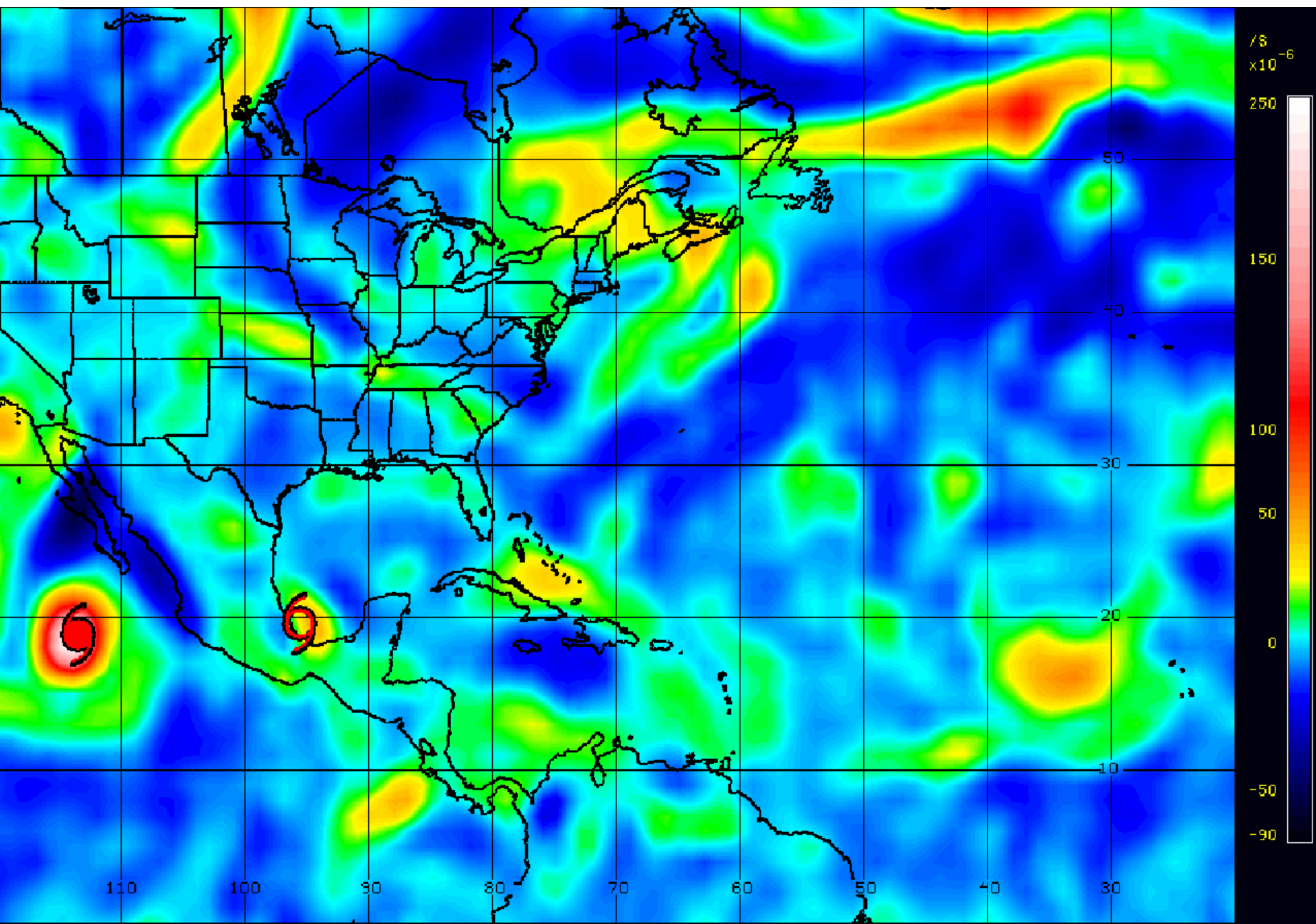












4

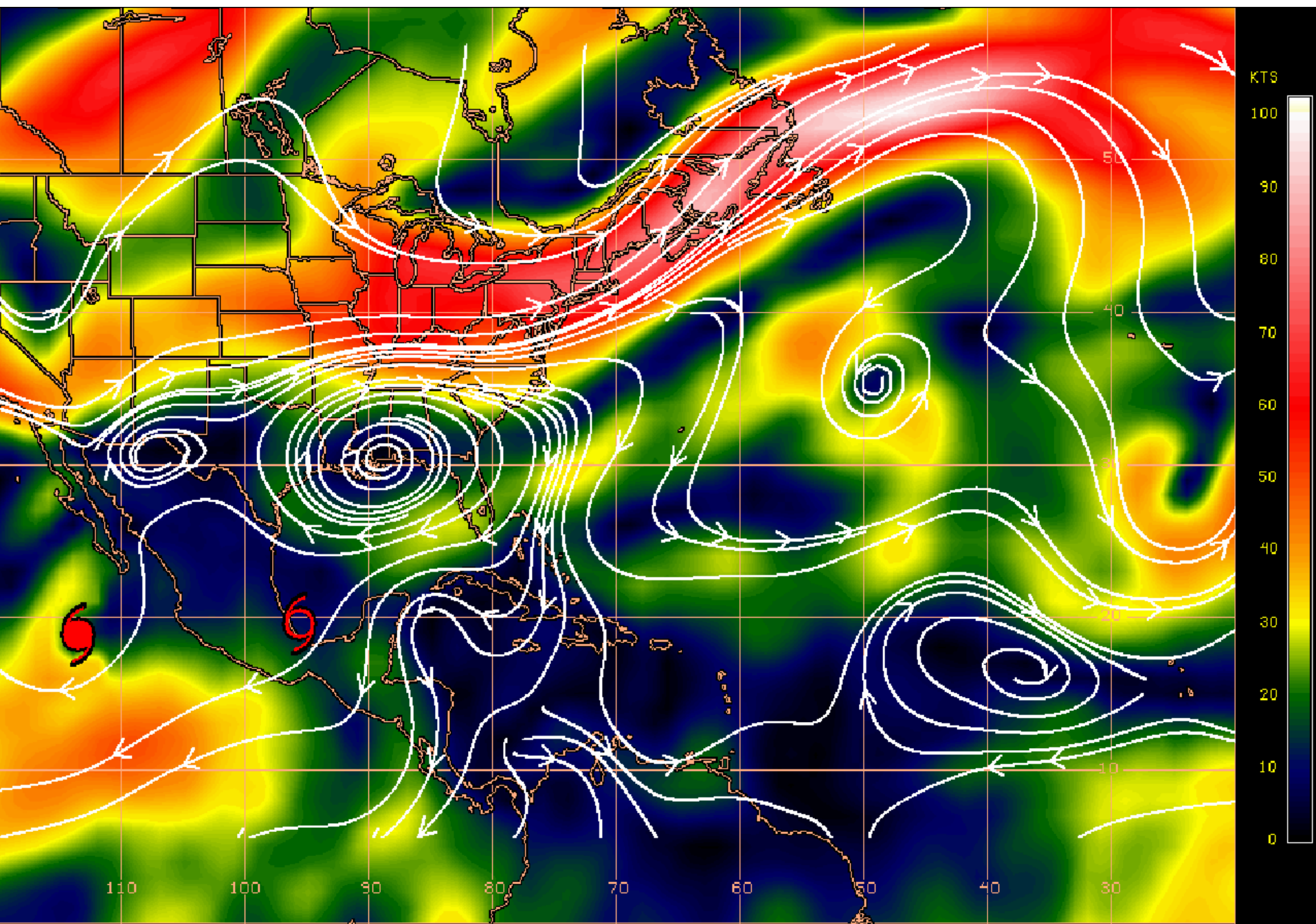
GOES-12 850 MB RELATIVE VORTICITY PRODUCT

0000 UTC

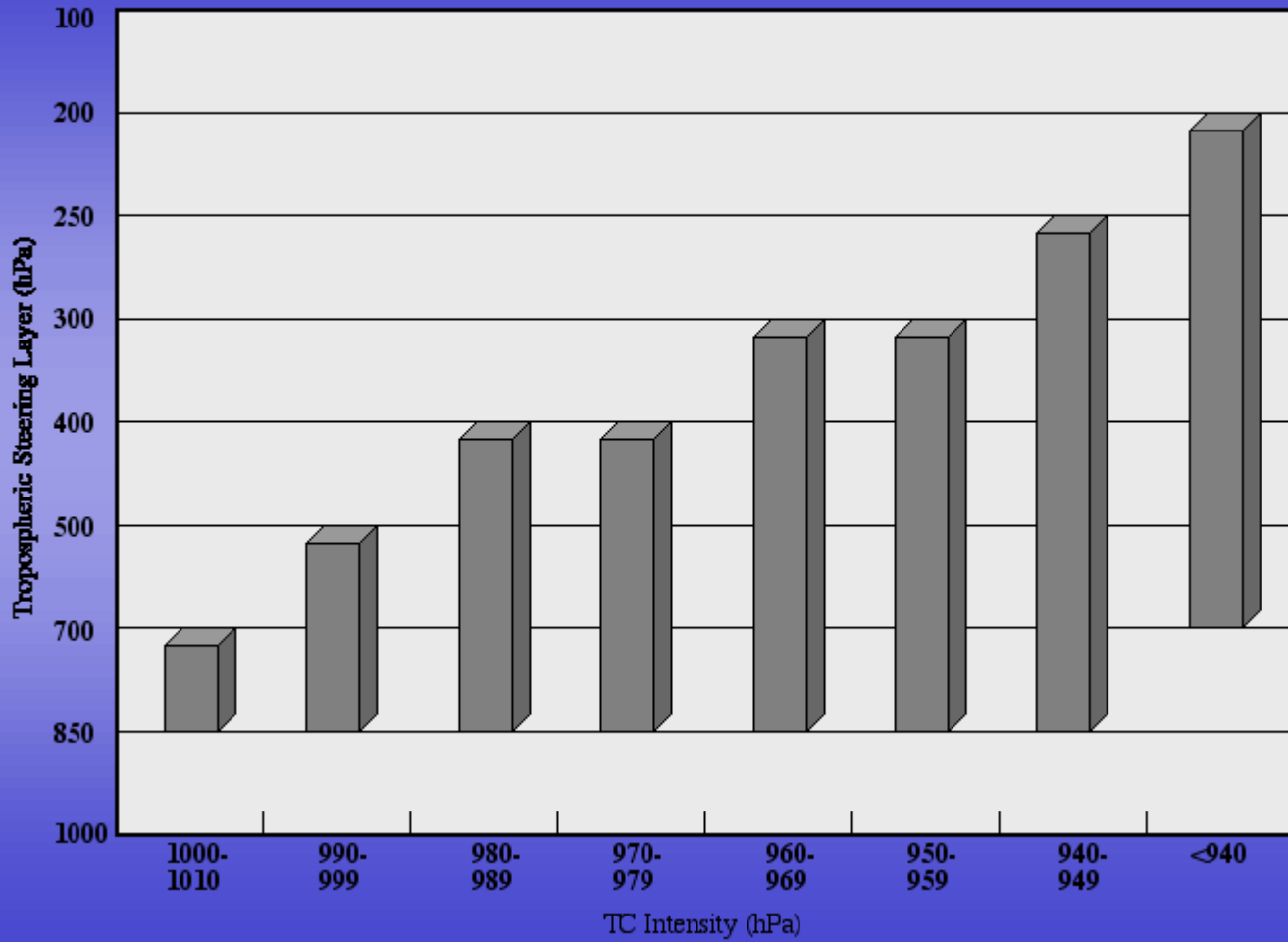
23AUG05

UW-CIMSS

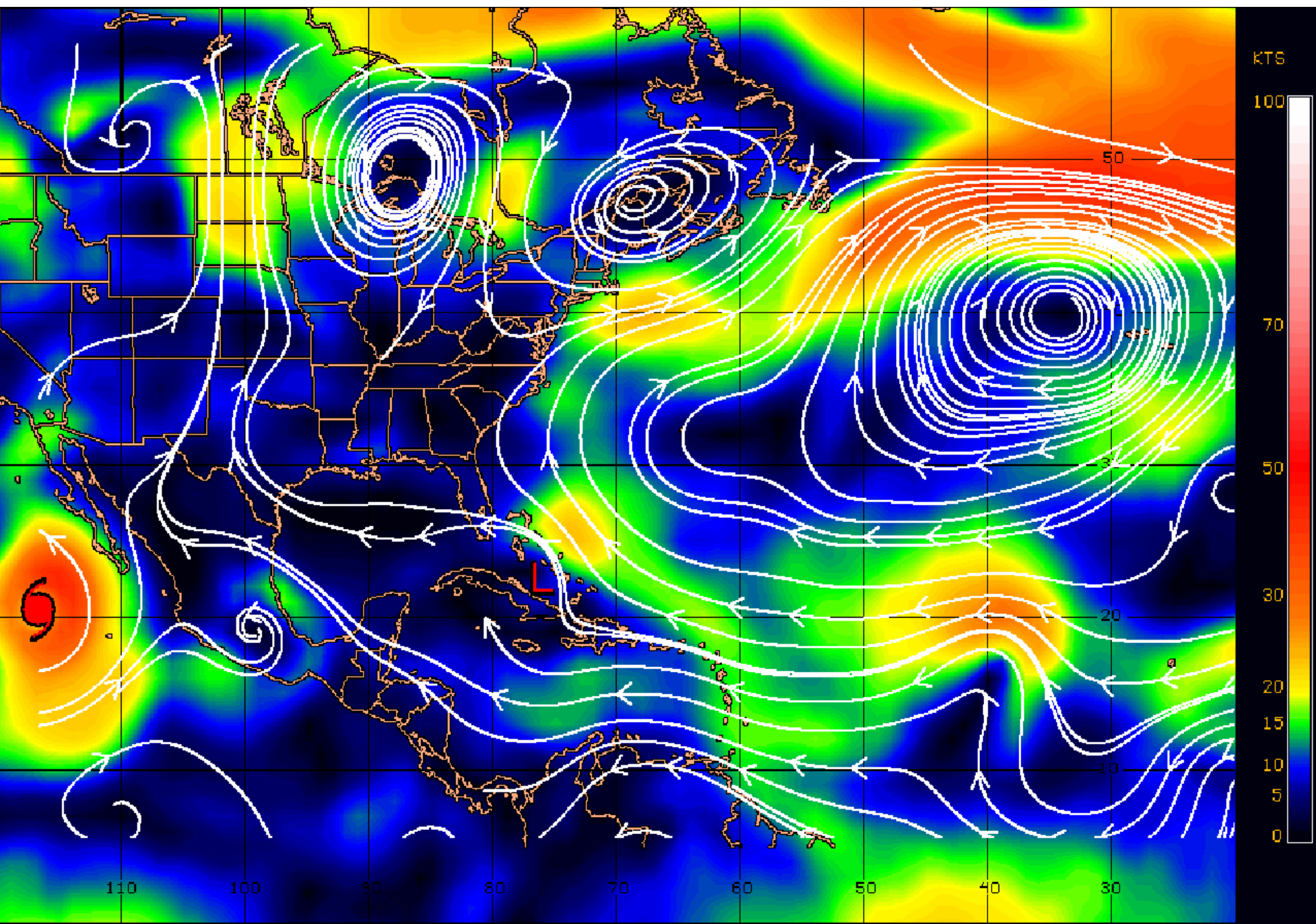
vorticity



## TC Intensity Vs. TC Environmental Steering







CIMSS ENV STEERING PRODUCT: 700-850 HPA LAYER (FOR TC MSLP RANGE: 1000-1010 HPA) 0000 UTC 24AUG05

steering

**Real-Time Data**

**NW Atlantic (GOES-12)**

[Winds & Analyses](#)

[Images & Movies](#)

[Layer Mean Wind Analyses](#)

[Saharan Air Layer Analyses](#)

**NE Atlantic (MET-8)**

[Winds & Analyses](#)

[Images & Movies](#)

[Saharan Air Layer Analyses](#)

**NW Pacific (MTSAT)**

[Winds & Analyses](#)

[Images & Movies](#)

[Layer Mean Wind Analyses](#)

**NE Pacific (GOES-10)**

[Winds & Analyses](#)

[Images & Movies](#)

[Layer Mean Wind Analyses](#)

**Combined NE Pacific  
and Carribean Sea  
(GOES-10/GOES-12)**

[Winds & Analyses](#)

**SE Pacific (GOES-10)**

[Winds & Analyses](#)

[Images & Movies](#)

**Australia (MTSAT)**

[Winds & Analyses](#)

[Images & Movies](#)

**Indian Ocean (MET-5)**

[Winds & Analyses](#)

[Images & Movies](#)

**Global Mosaics**

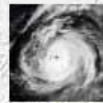
[Images & Movies](#)

[Tropical Wave Tracking](#)

[N Am](#) | [N Pac](#) | [S Am](#) | [S Pac](#)

**AMSU Data**

[Images & Analyses](#)



# Tropical Cyclones



*University of Wisconsin - Madison*

*Cooperative Institute for Meteorological Satellite Studies*

***Tropical Cyclone Research Team***

*Chris Velden Jim Kossin Tim Olander Dave Stettner*

*Derrick Herndon Tony Wimmers Howard Berger*

*Remote Collaborators*

*Jeff Hawkins (NRL-MRY) Jason Dunion (NOAA/HRD)*

*Robert Wacker (USAF) Gregg Gallina (NOAA/SAB)*

## DATA STATUS :

*(as of 18 Oct 2005 / 18:21UTC)*

all products are available

## STORM COVERAGE

### North Atlantic

Hurricane WILMA

[Tropical Weather Discussion](#)

[Tropical Weather Outlook](#)

[Recon Plan of the Day](#)

### East/Central Pacific

Tropical Depression SIXTEEN-E

[Tropical Weather Discussion](#)

[Tropical Weather Outlook-NHC](#)

[Tropical Weather Outlook-CPH](#)

### West Pacific

Typhoon 21W

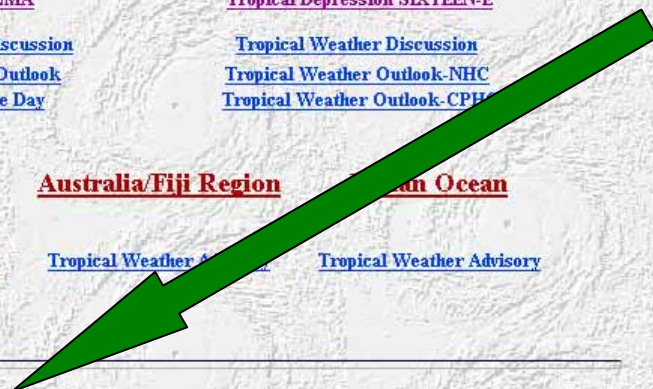
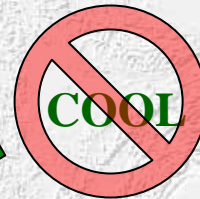
[Tropical Weather Advisory](#)

### Australia/Fiji Region

[Tropical Weather Advisory](#)

### Indian Ocean

[Tropical Weather Advisory](#)



## SPECIAL IMAGE(S) OF THE WEEK

**NEW!** High Resolution Image of Hurricane Katrina (28 August/20:45UTC)

*(courtesy Rick Kohrs/UW-SSEC)*

Movies of Hurricane Rita [IR](#) | [WV](#) | [VIS/IR Combo](#) (AVI format)

# http://cimss.ssec.wisc.edu/tropic/