

The background of the slide features a photograph of a commercial airplane flying through a layer of white clouds against a blue sky. A large, semi-transparent watermark of the NOAA logo is overlaid on the right side of the image. The logo includes the text "NATIONAL OCEANIC AND ATMOSPHERIC ADMINISTRATION" and "U.S. DEPARTMENT OF COMMERCE" around the perimeter, with "NOAA" in the center.

McIDAS-X Applications at the Aviation Weather Center

Amanda Terborg
UW CIMSS – Aviation Weather Center
McIDAS Users Group meeting
8 – 10 June 2015

Why McIDAS-X?



3. Unique domains
From terminal to global



2. Challenging forecasts
Many hazards, little time



1. Extensive responsibilities
From takeoff to touchdown, globally



Why McIDAS-X?

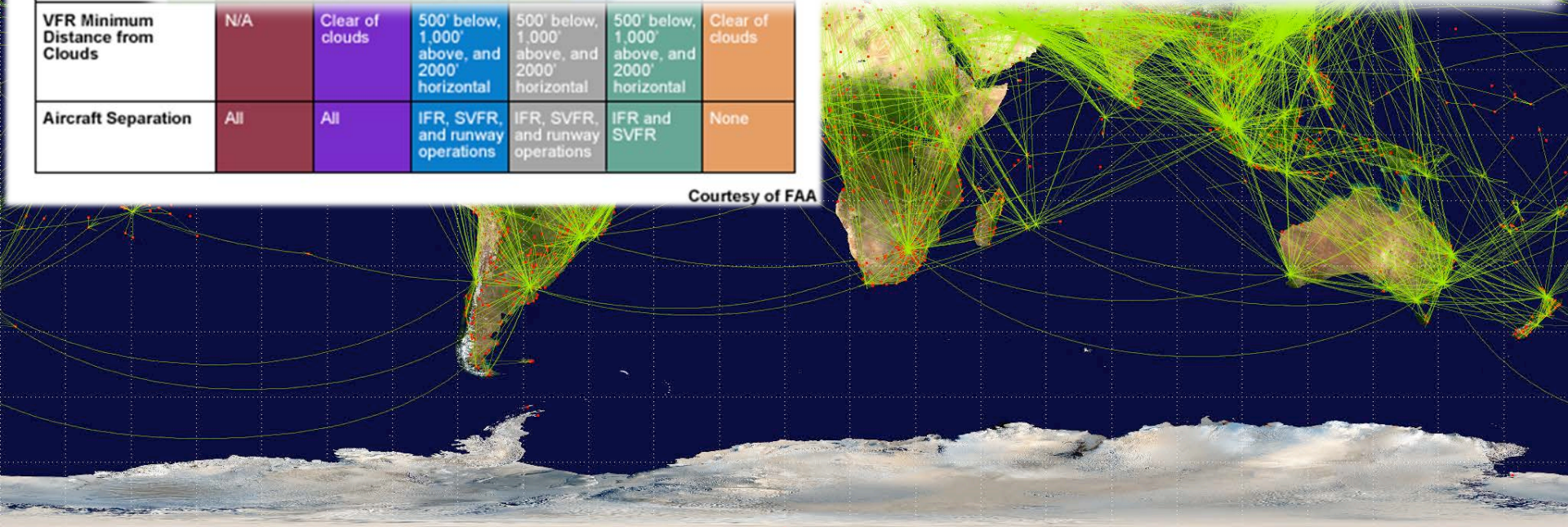


Airspace Features
ATC Facility
Operations Permitted
Entry Requirements



VFR Minimum Distance from Clouds	N/A	Clear of clouds	500' below, 1,000' above, and 2000' horizontal	500' below, 1,000' above, and 2000' horizontal	500' below, 1,000' above, and 2000' horizontal	Clear of clouds
Aircraft Separation	All	All	IFR, SVFR, and runway operations	IFR, SVFR, and runway operations	IFR and SVFR	None

Courtesy of FAA



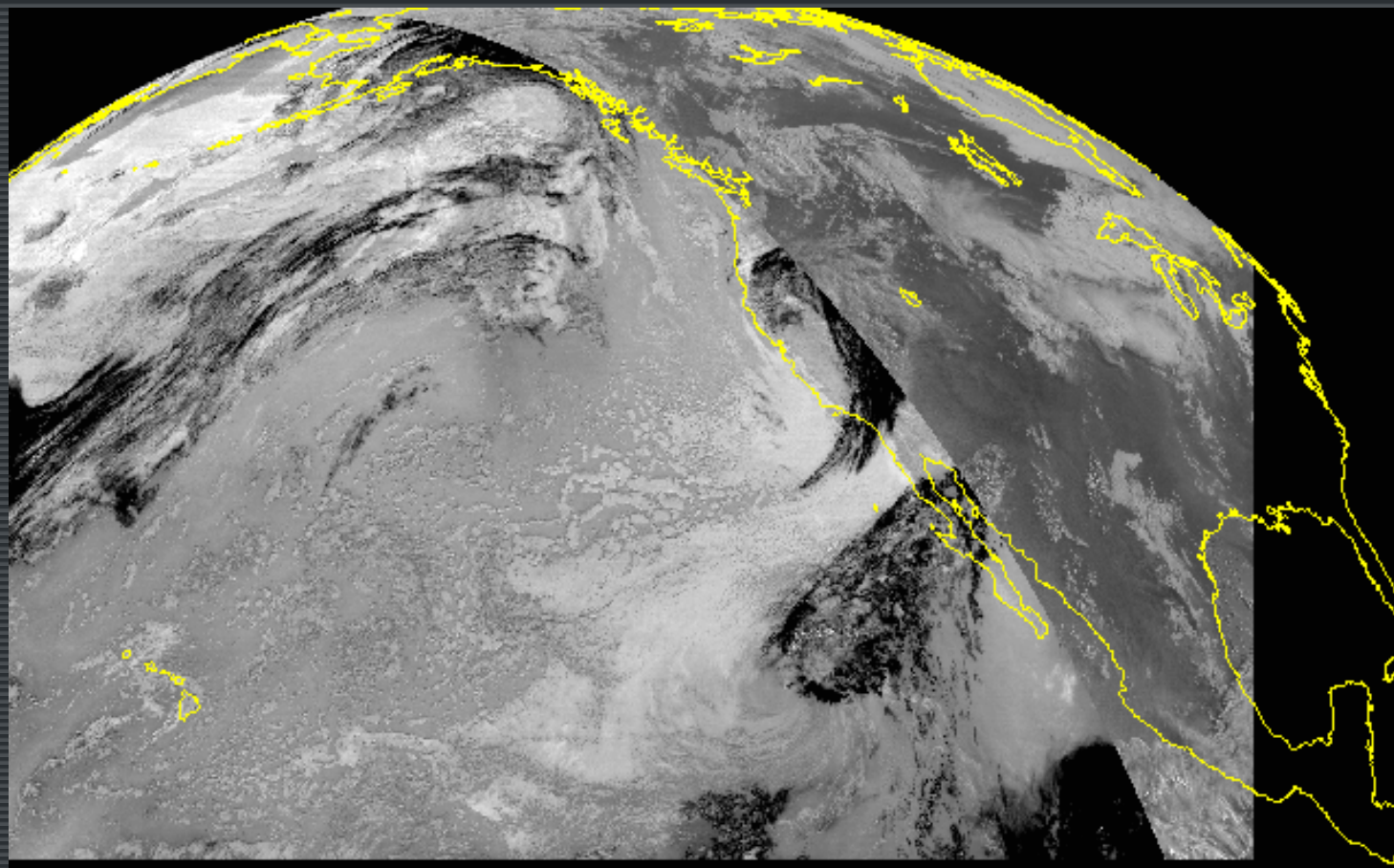
McIDAS concepts

- VIS/IR combo for ceiling and visibility
 - Continuous images day/night
- Global mosaics – GEO/LEO combo
 - global
 - north/south pole
 - VIS/IR/WV
- Satellite/model derivations – convective imagery
- Other sectors...



Visible/Infrared Mosaic

For continuous day/night coverage

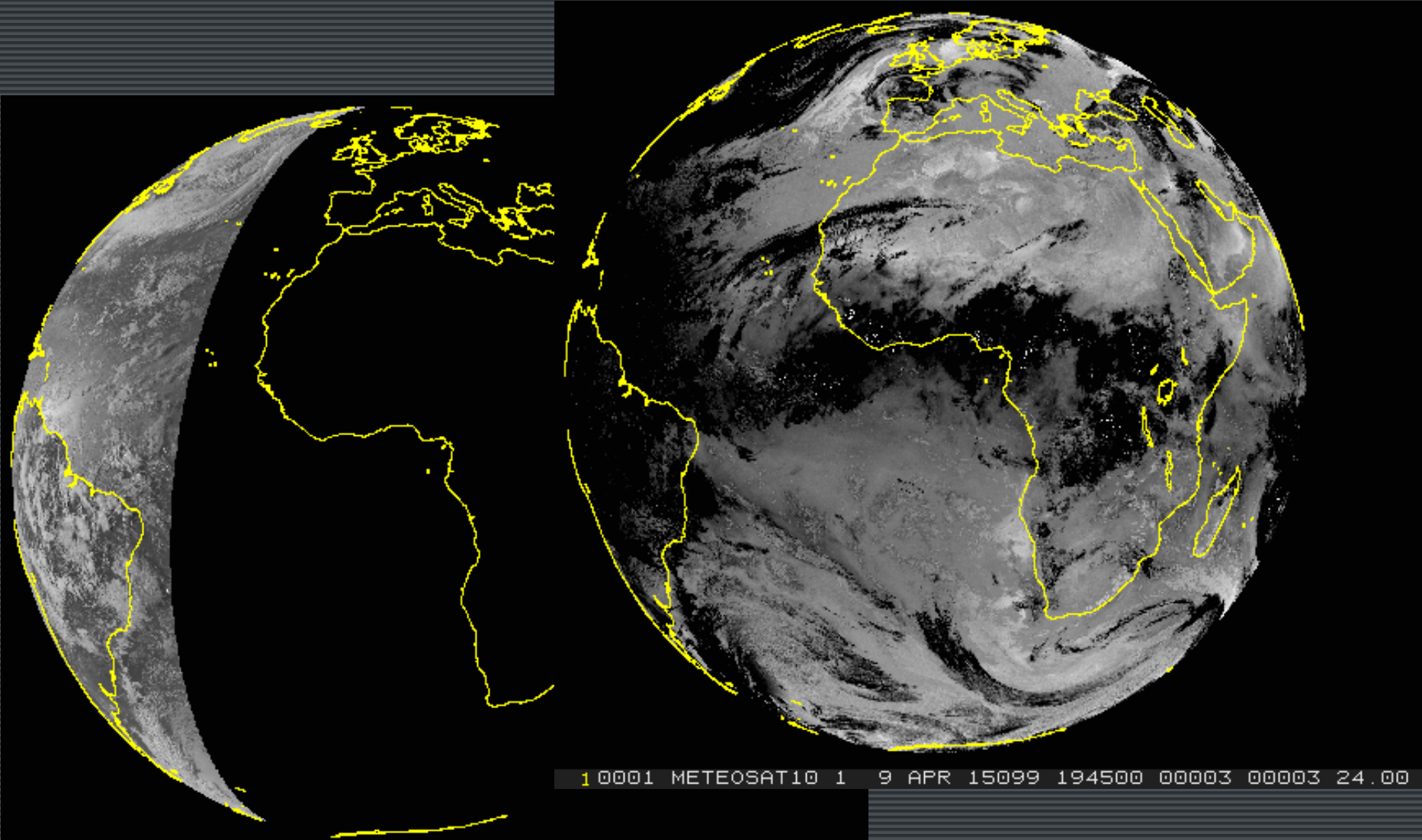


1 0001 G-15 IMG 1 4 JUN 15155 124500 02645 10053 10.00

McIDAS

Visible/Infrared Mosaic

For continuous day/night coverage

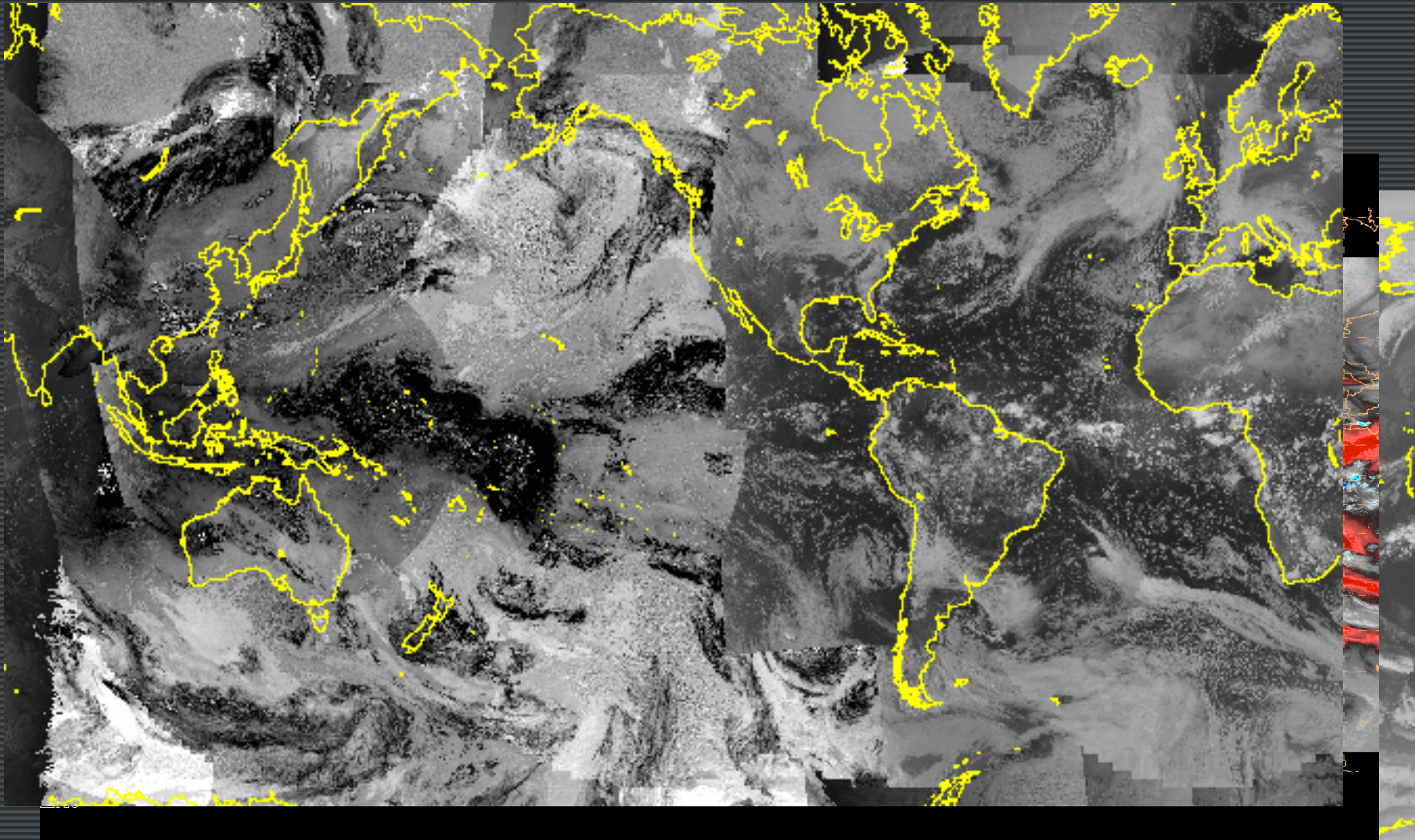


1 0001 METEOSAT10 1 9 APR 15099 194500 00003 00003 24.00

1 0001 METEOSAT10 1 9 APR 15099 194500 00003 00003 24.00

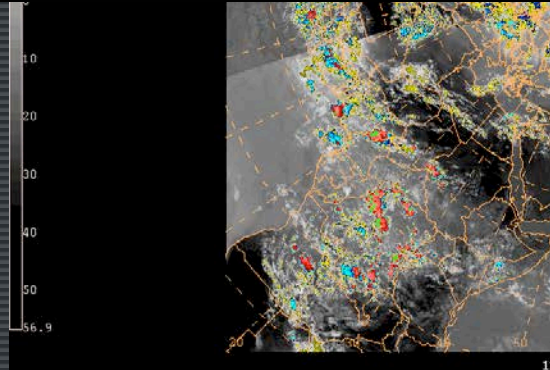
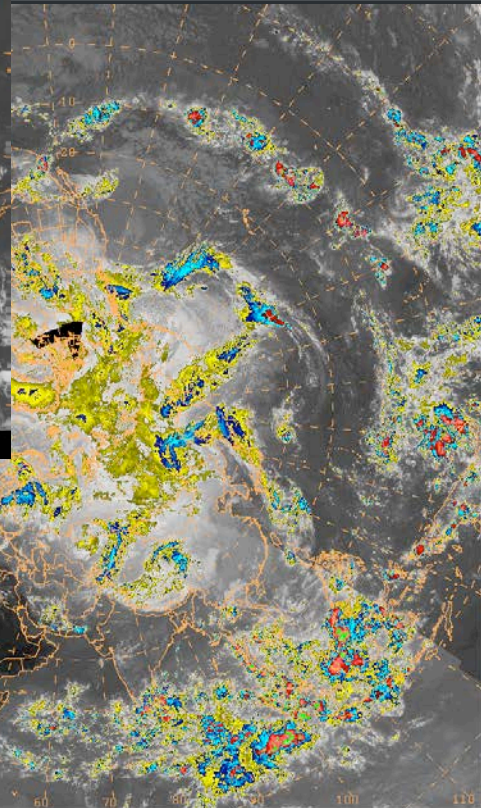
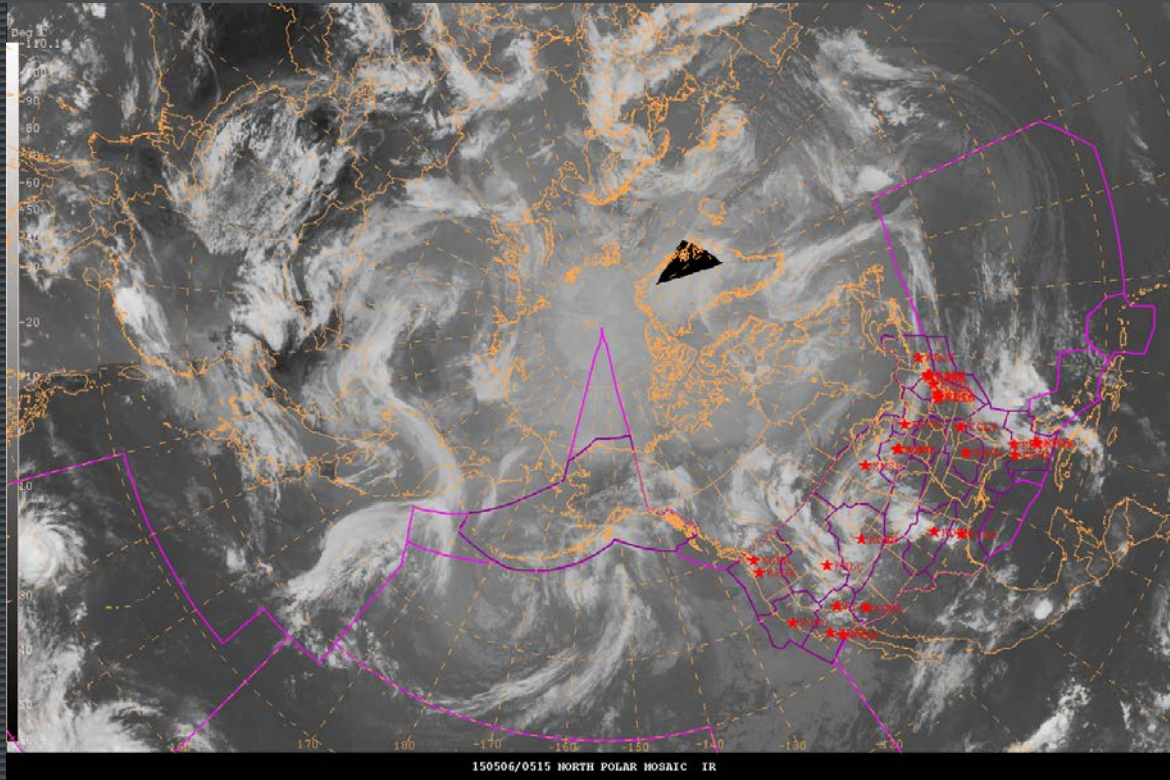
Global Mosaics

For the International Operations Branch



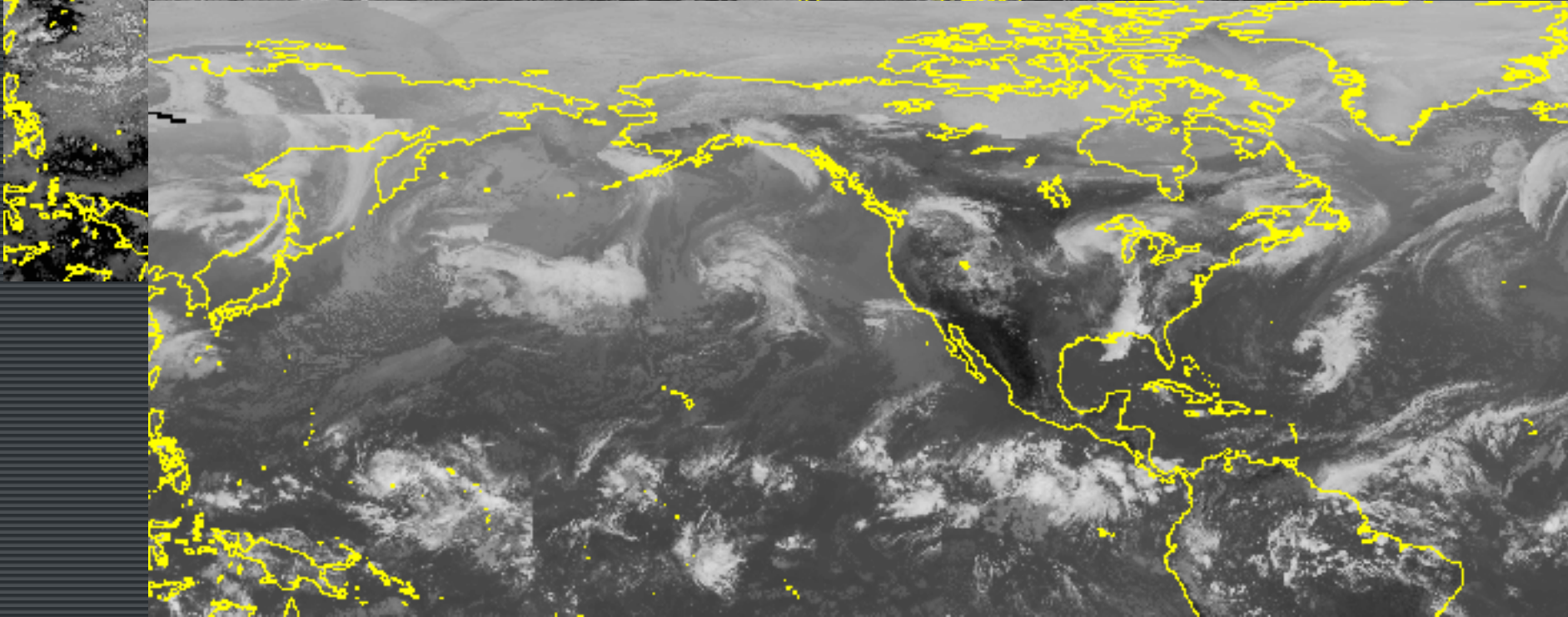
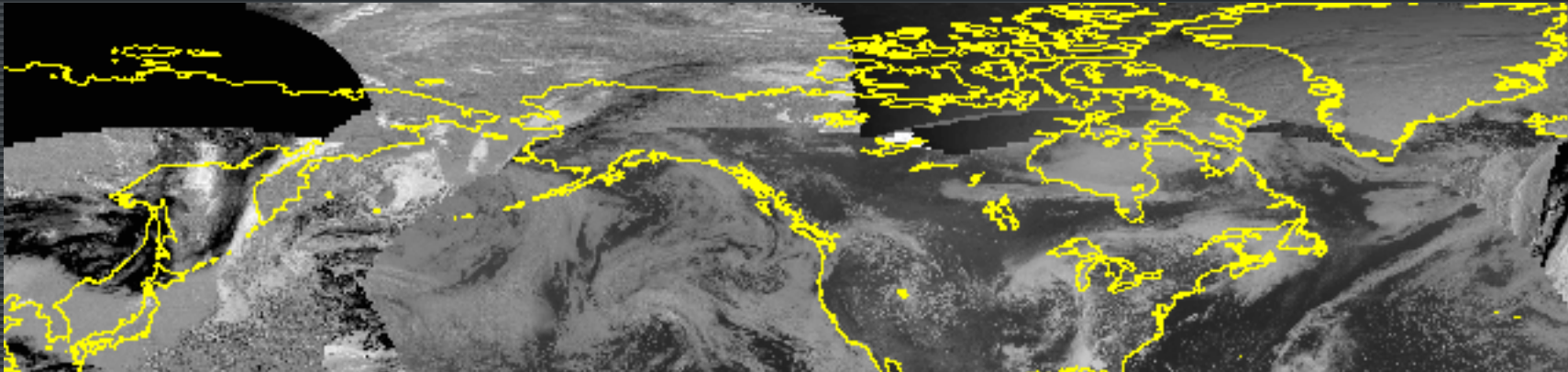
Polar Mosaics

For the International Operations Branch



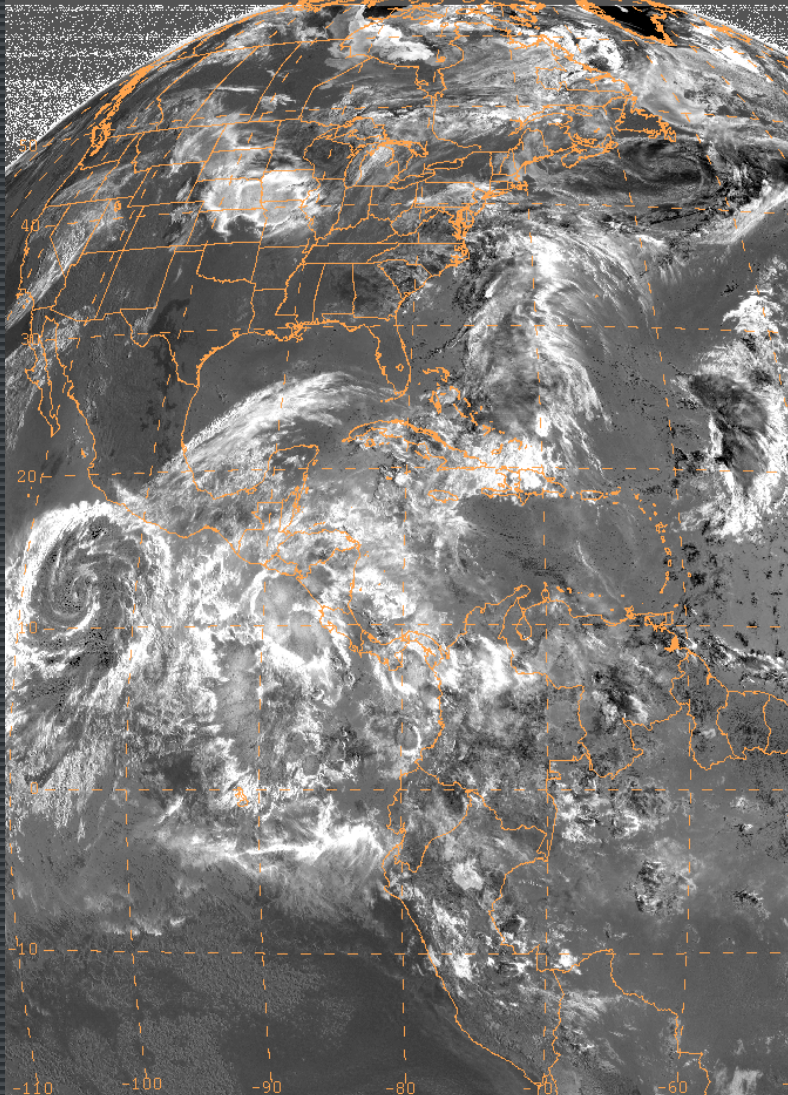
Hemispheric Mosaics

For the International Operations Branch

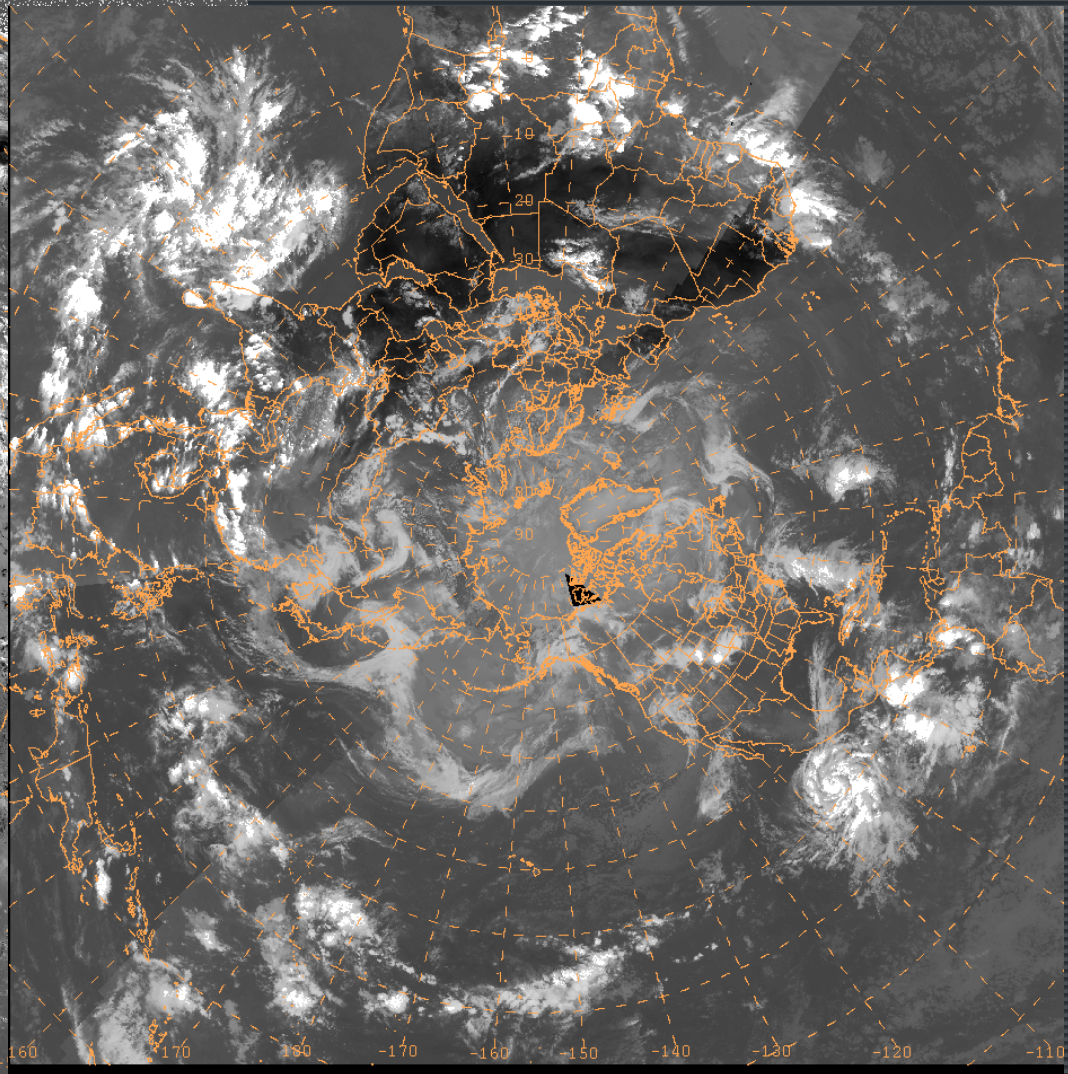


Derived Imagery

Convective model/satellite products and ash products



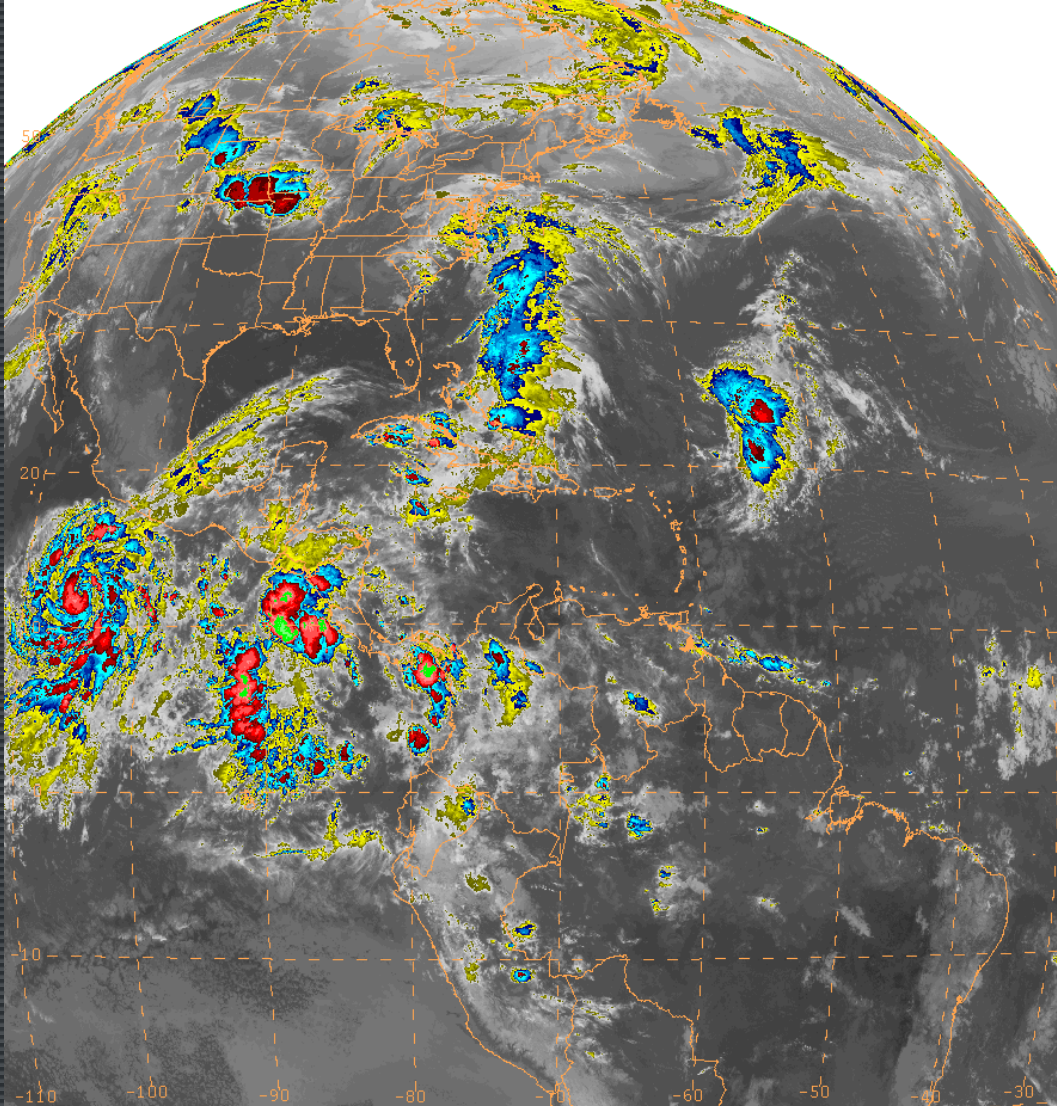
150604/1215 GOES13 VIS



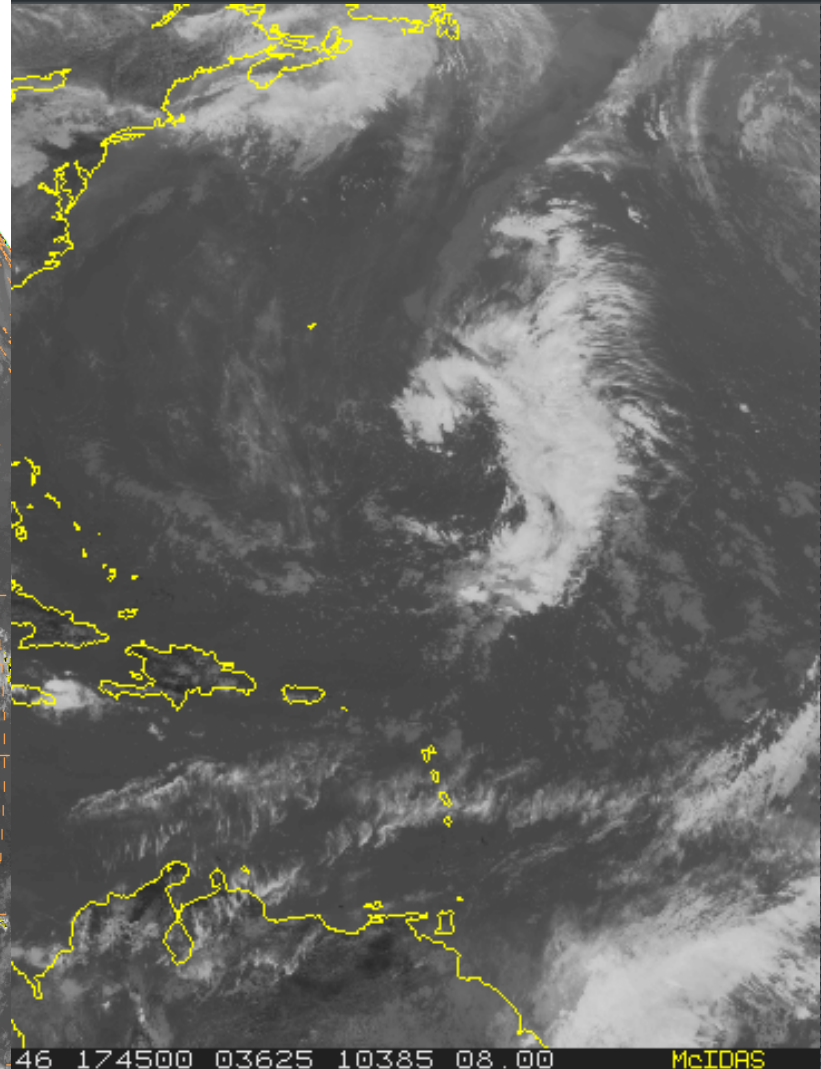
150604/1215 NORTH POLAR MOSAIC GCD

Other sectors

Tropical and extended GE/GW coverage



150604/1215 GOES13 IR4



46 174500 03625 10385 08.00

McIDAS

Other sectors



Web mosaic imagery

US Regional Imagery



Click on site name for regional page

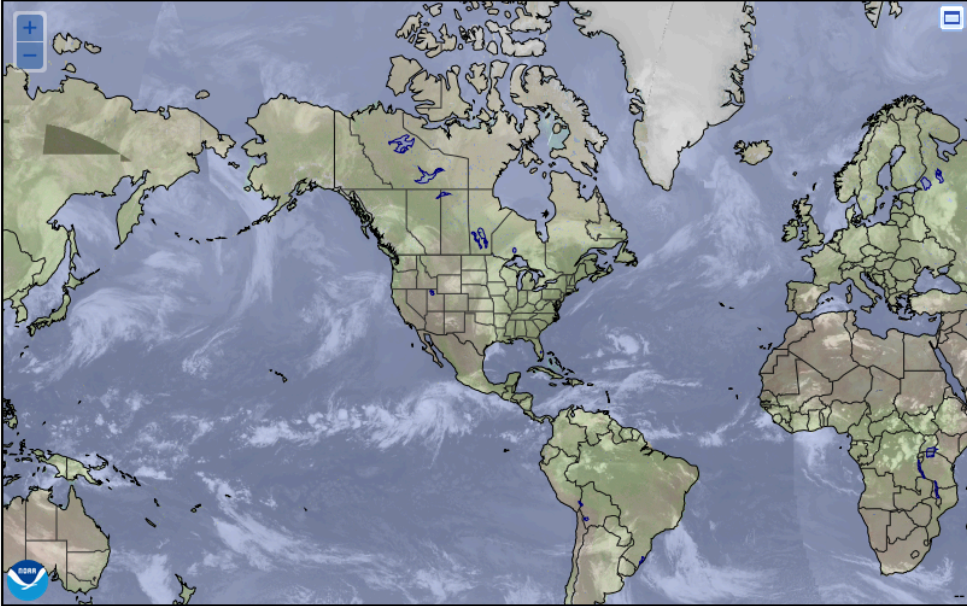
**GOES Vis/Fog
VFR/IFR**

  **AVIATION WEATHER CENTER**
NOAA NATIONAL WEATHER SERVICE

Local Forecast [HOME](#) [ADVISORIES](#) [FORECASTS](#) [OBSERVATIONS](#) [TOOLS](#) [NEWS](#) [SEARCH](#) [ABOUT](#) [USER](#)

Aviation Weather Overview

Valid at 1632 UTC 29 May 2015



Sat VisFog Radar METAR FltCat SIGMET CWA Highways Jetroutes FIRs
 G-AIRMET PIREP-Ice PIREP-Turb Hover

Flt Cat: ● MVFR ● IFR ● LIFR PIREP Turb: ▲ LGT ▲ MOD ▲ SEV PIREP Ice: 🍃 LGT 🍃 MOD 🍃 SEV

Disclaimer: International SIGMET locations approximated. Please refer to SIGMET text for full details

Interactive Maps:

Turns off interactive maps on main pages and adds a link to the interactive maps on a secondary page. Turning off maps is recommended for slow browsers and network connections.



Questions?