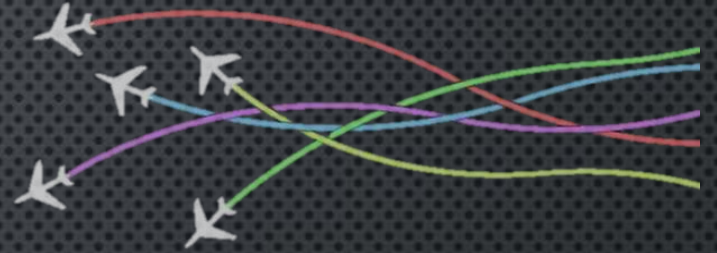


AVIATION WEATHER CENTER AND MCIDAS-X UTILITY

AMANDA TERBORG
NCEP/AWC AND CIRA/CSU
MUG MEETING – MADISON, WI
22-23 MAY 2018



McIDAS-X concepts



AVIATION WEATHER CENTER UTILITY

- VIS/IR COMBINATION FOR CEILING & VISIBILITY – DAY TO NIGHT CONTINUITY
 - PRODUCING GOES-16 VERSION NOW
- GLOBAL MOSAICS – GEO/LEO COMPOSITES
 - WATER VAPOR AND EXPANDED DISPLAY WITH 2017.2 – ADJUSTMENT FOR SDI
- OTHER BAND DIFFERENCES/DERIVED PRODUCTS
 - INCLUDES ABI L2 DERIVED PRODUCTS (SST)
 - GOES-16 ASH DIFFERENCE FOR MOSAIC IMAGERY



McIDAS-X concepts



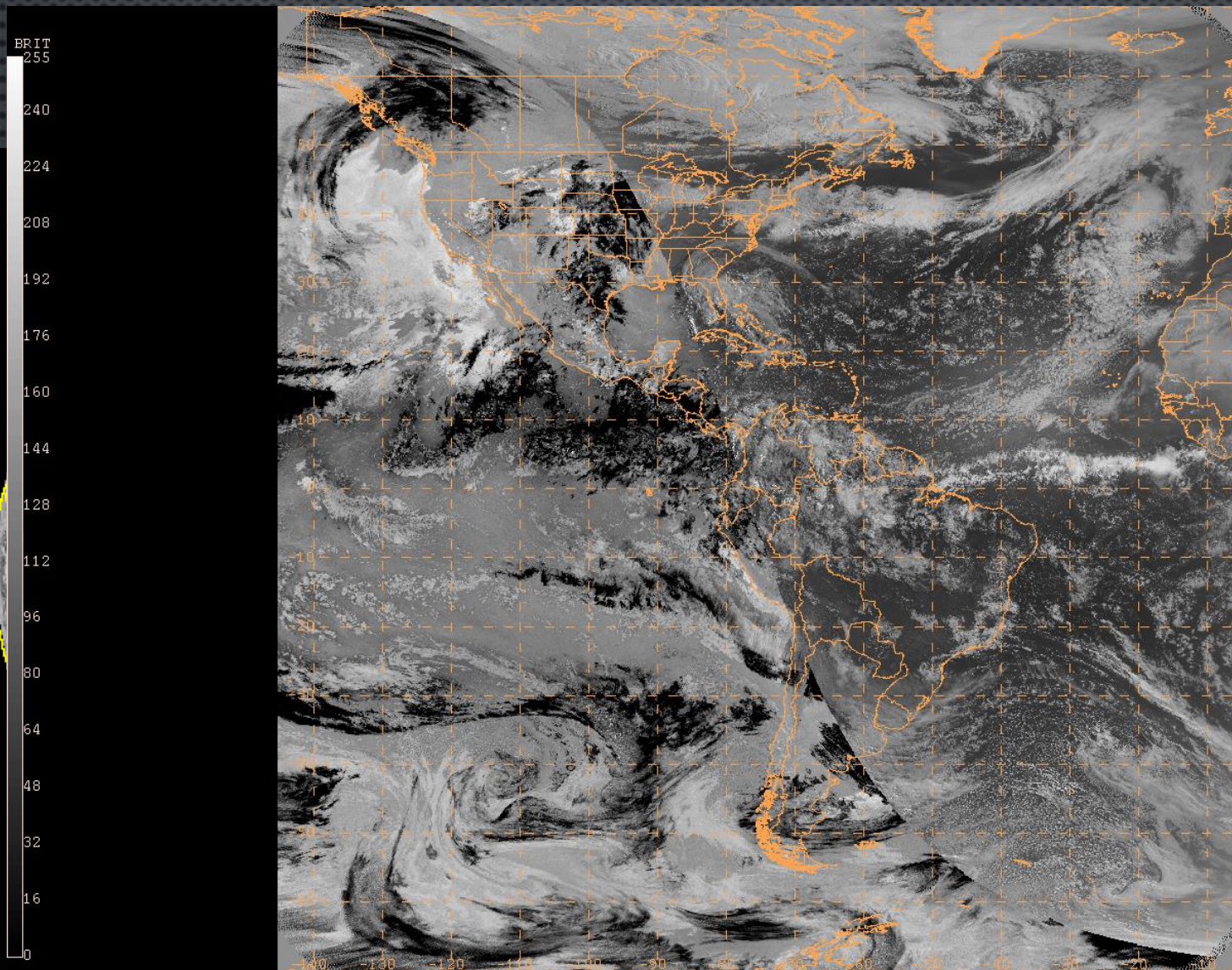
AVIATION WEATHER CENTER UTILITY

- CONUS SCALE MOSAIC
 - GOES-15/GOES-16 COMPOSITE
- INSAT DATA DISPLAY
 - INSRO ADDE SERVERS
 - EUMETSAT DATA AVAILABILITY



Vis/Fog Difference

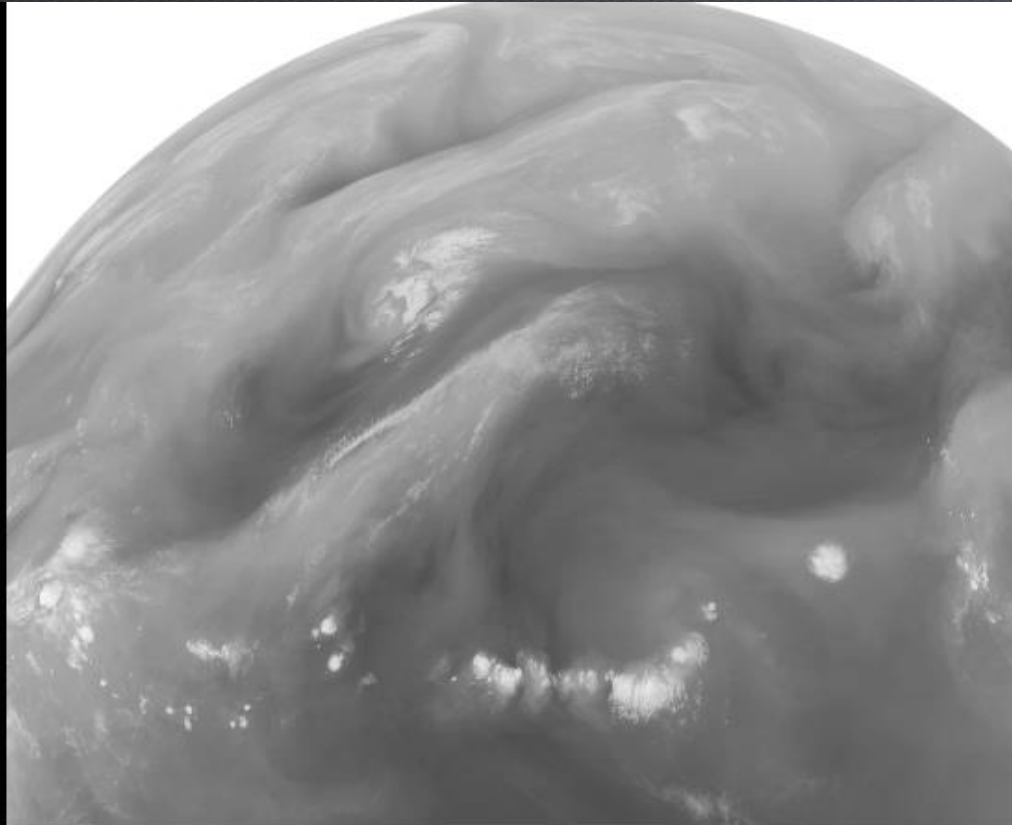
GOES-16 version



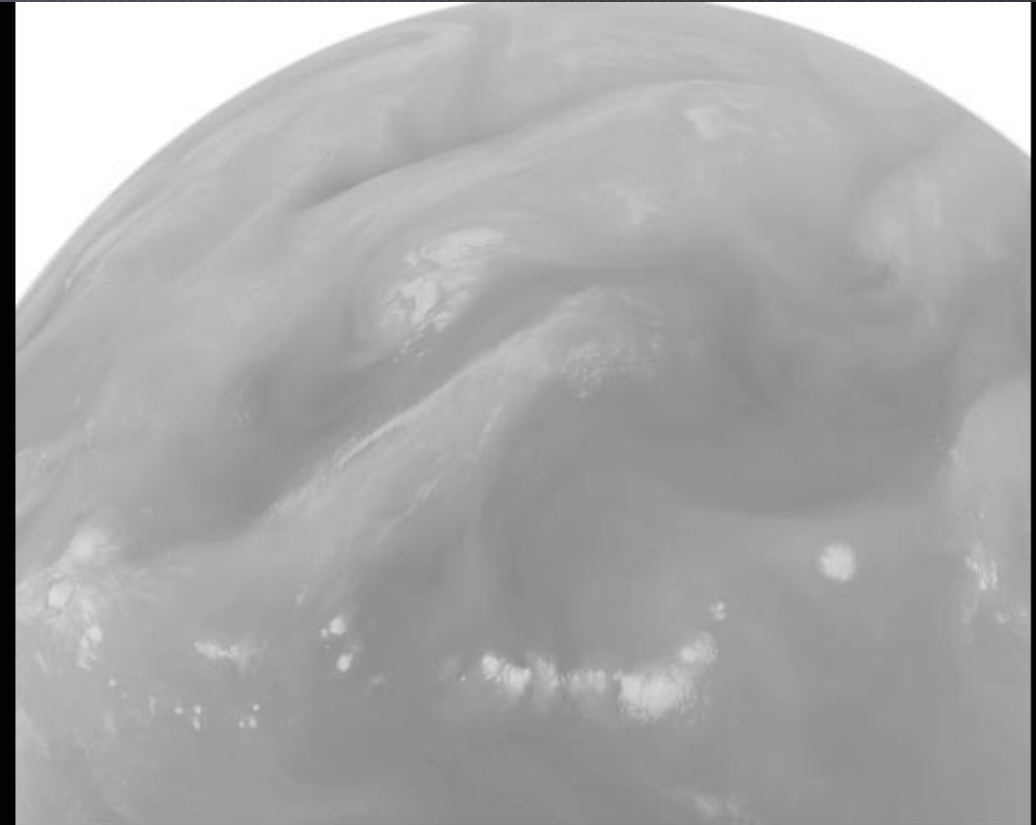
180514/1115 GOES16 0.64um Red VIS

Water Vapor imagery

Expanded display with 2017.2



2017.2



2017.1

2 0002 G-15 IMG 3 9 OCT 17282 143000 02525 07845 12.00

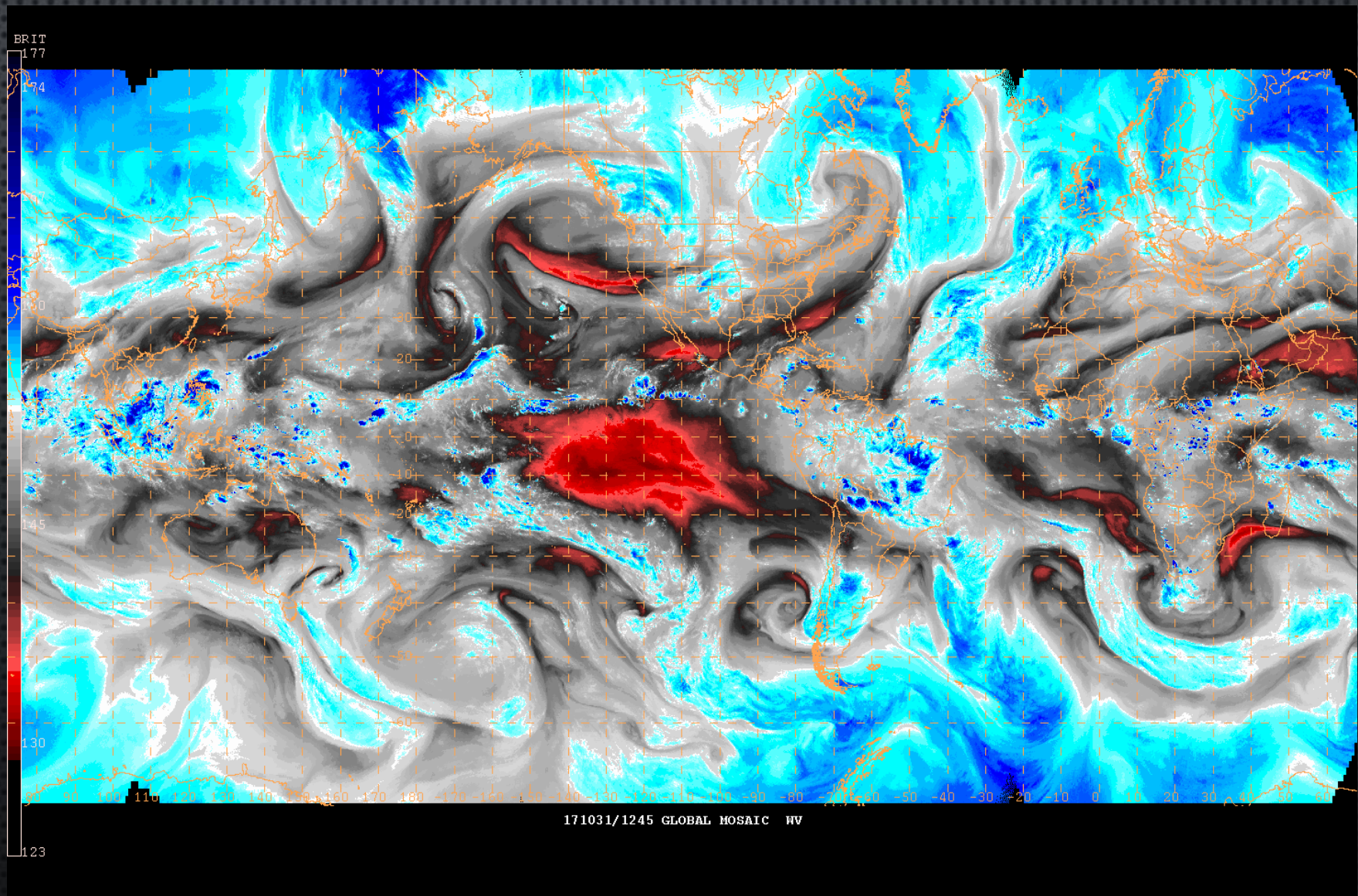
2 0002 G-15 IMG 3 9 OCT 17282 143000 02525 07845 12.00

- 2017.2 expanded stretch feature added more contrast to WV channels
- Discovered the SDIs were still using the original contrast. Added MCS=ORIGINAL to mitigate until the SDI software can be updated

Global Mosaics

Using GOES-16

Global WV composite

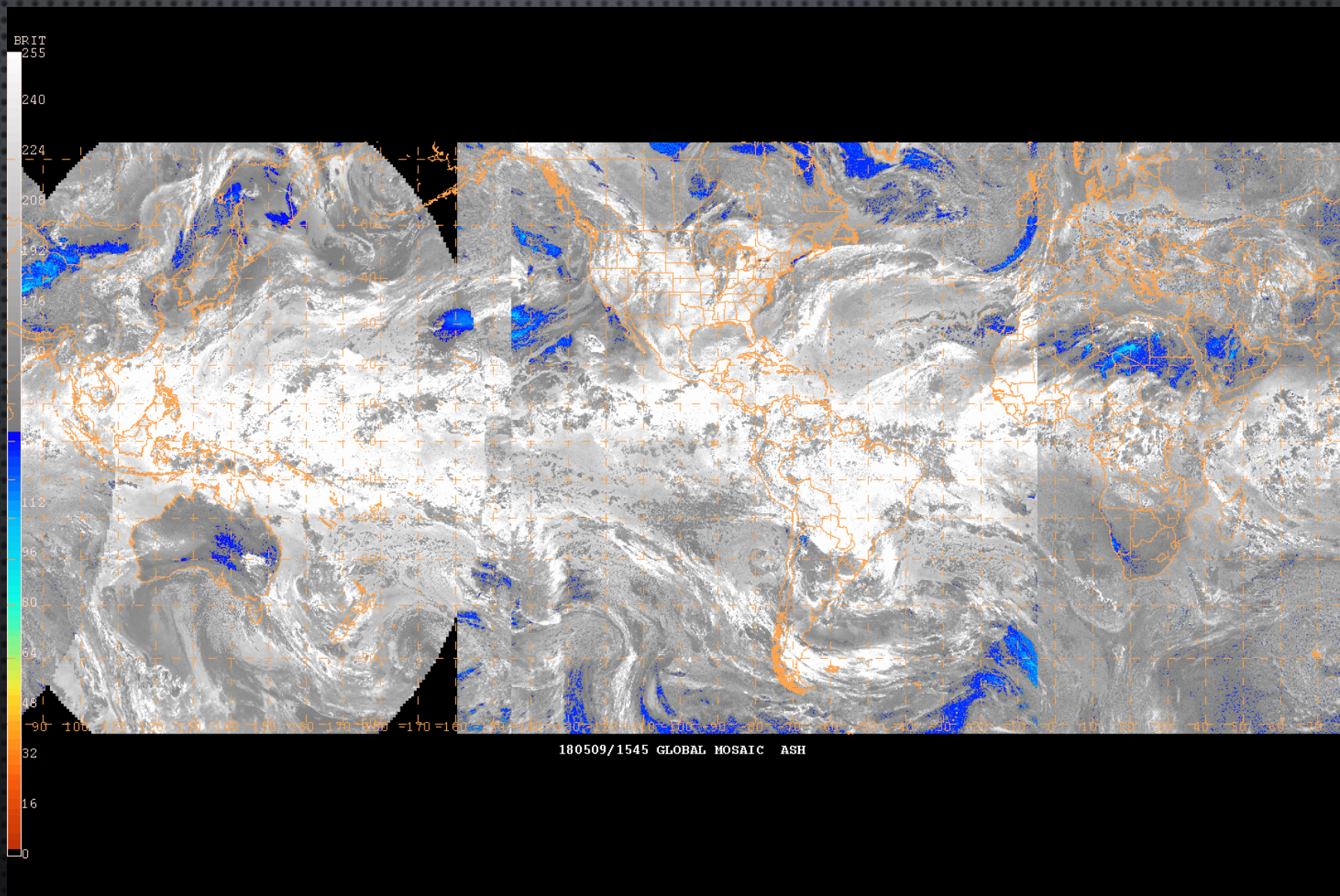


Global Mosaics

Using GOES-16

Global WV composite

Global Ash composite



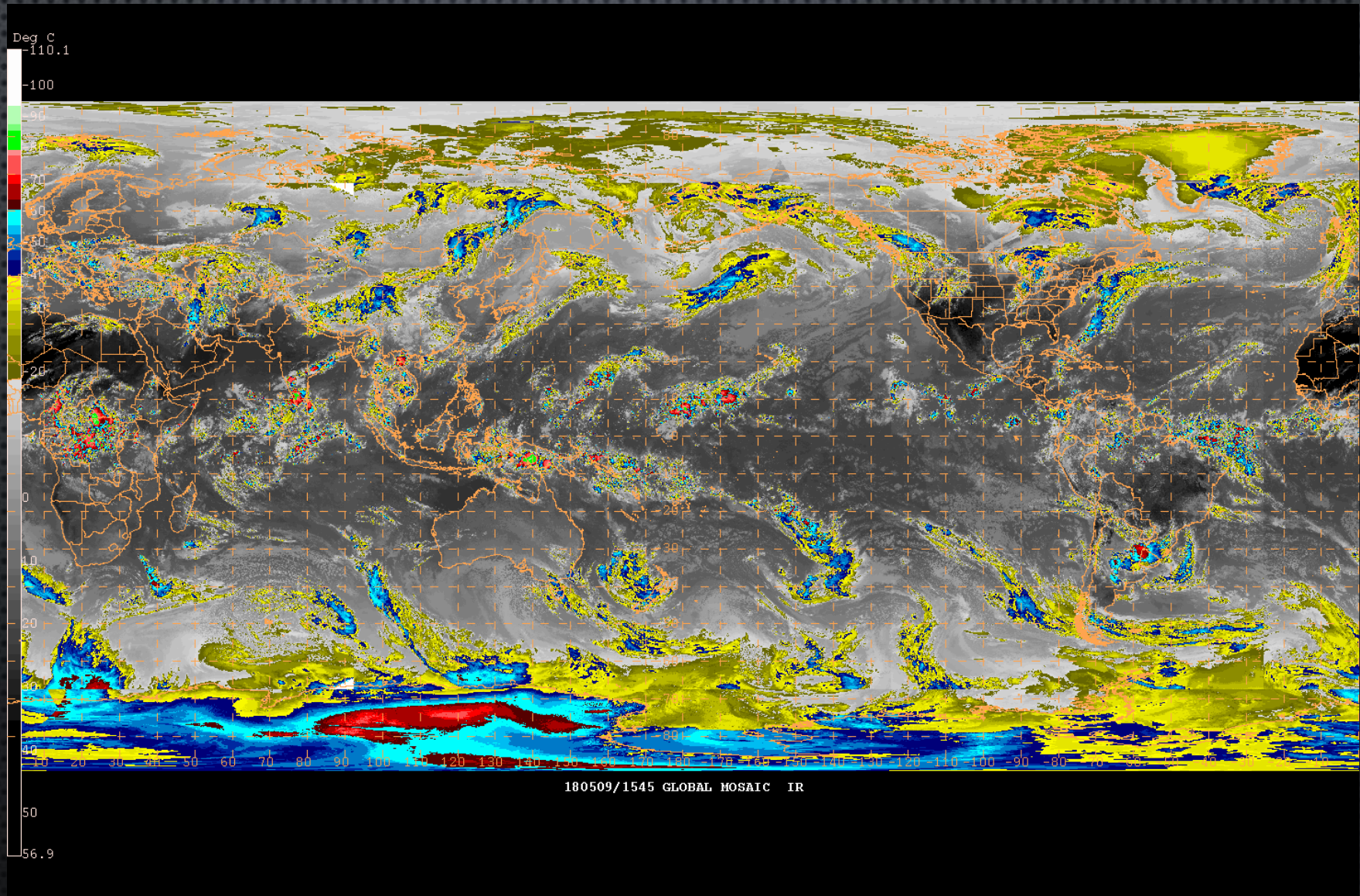
Global Mosaics

Using GOES-16

Global WV composite

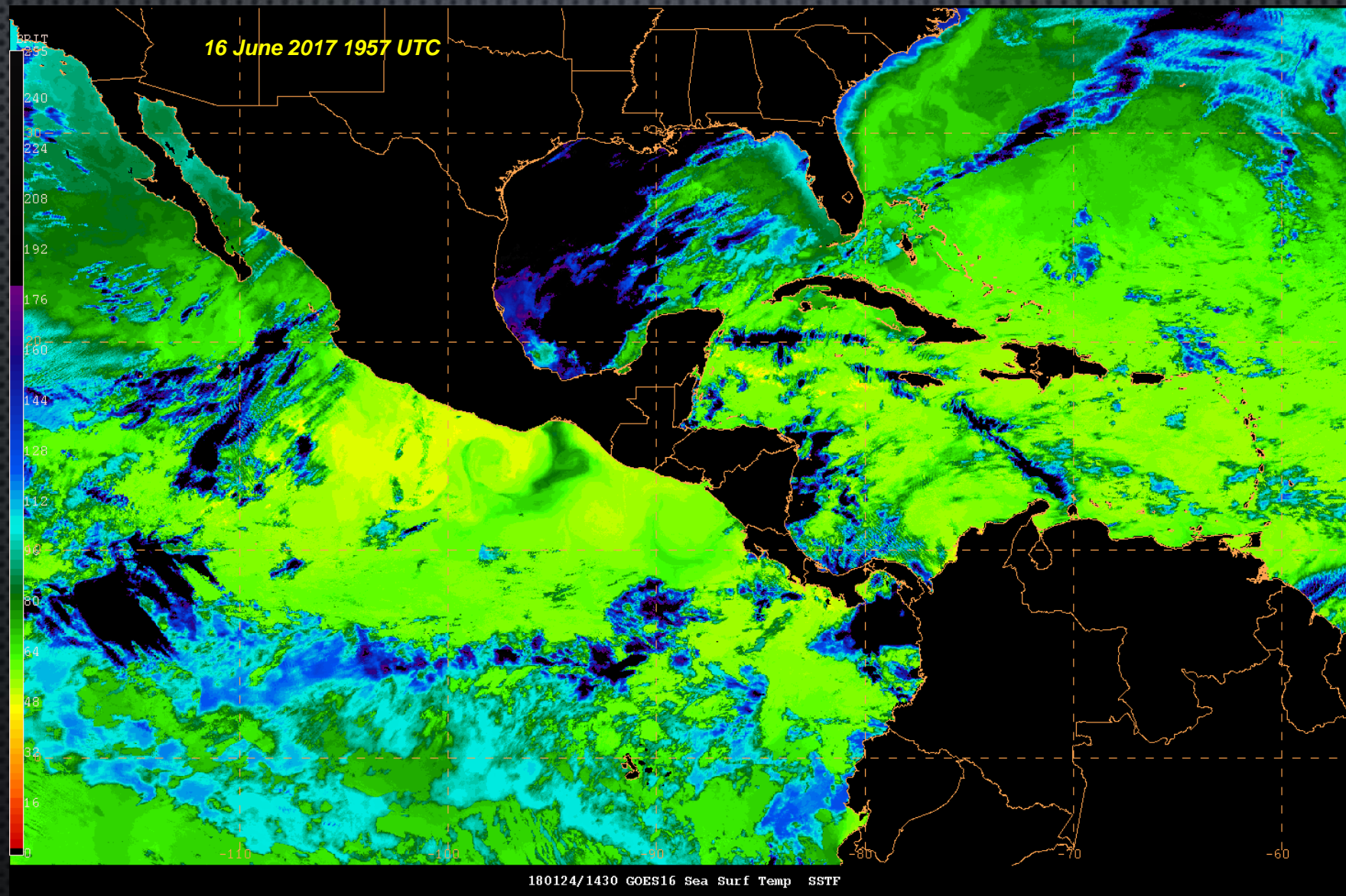
Global Ash composite

Global IR composite



Derived Products

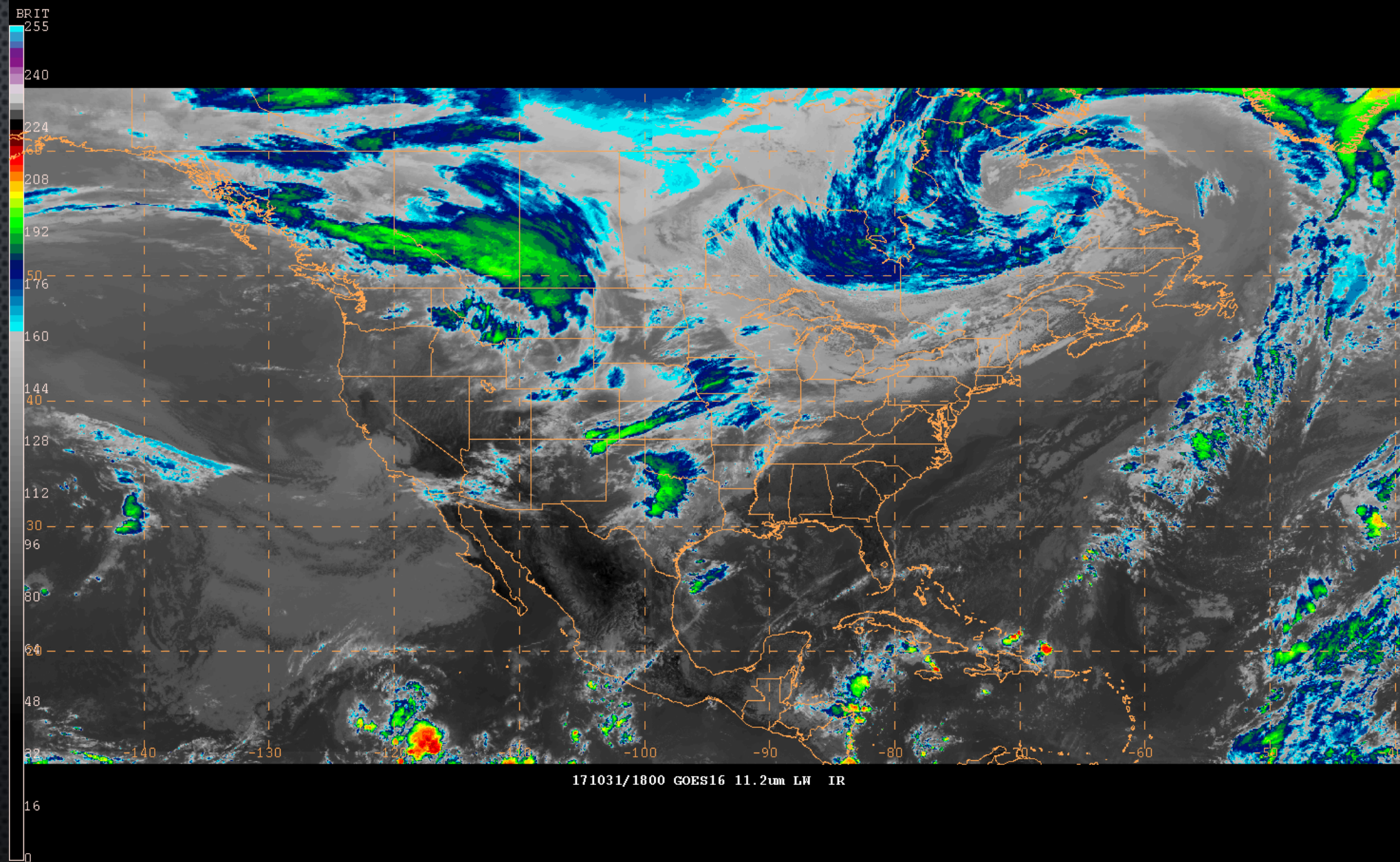
GOES-16 Sea Surface Temperatures



CONUS composites

GOES-16 and GOES-15

IR composite

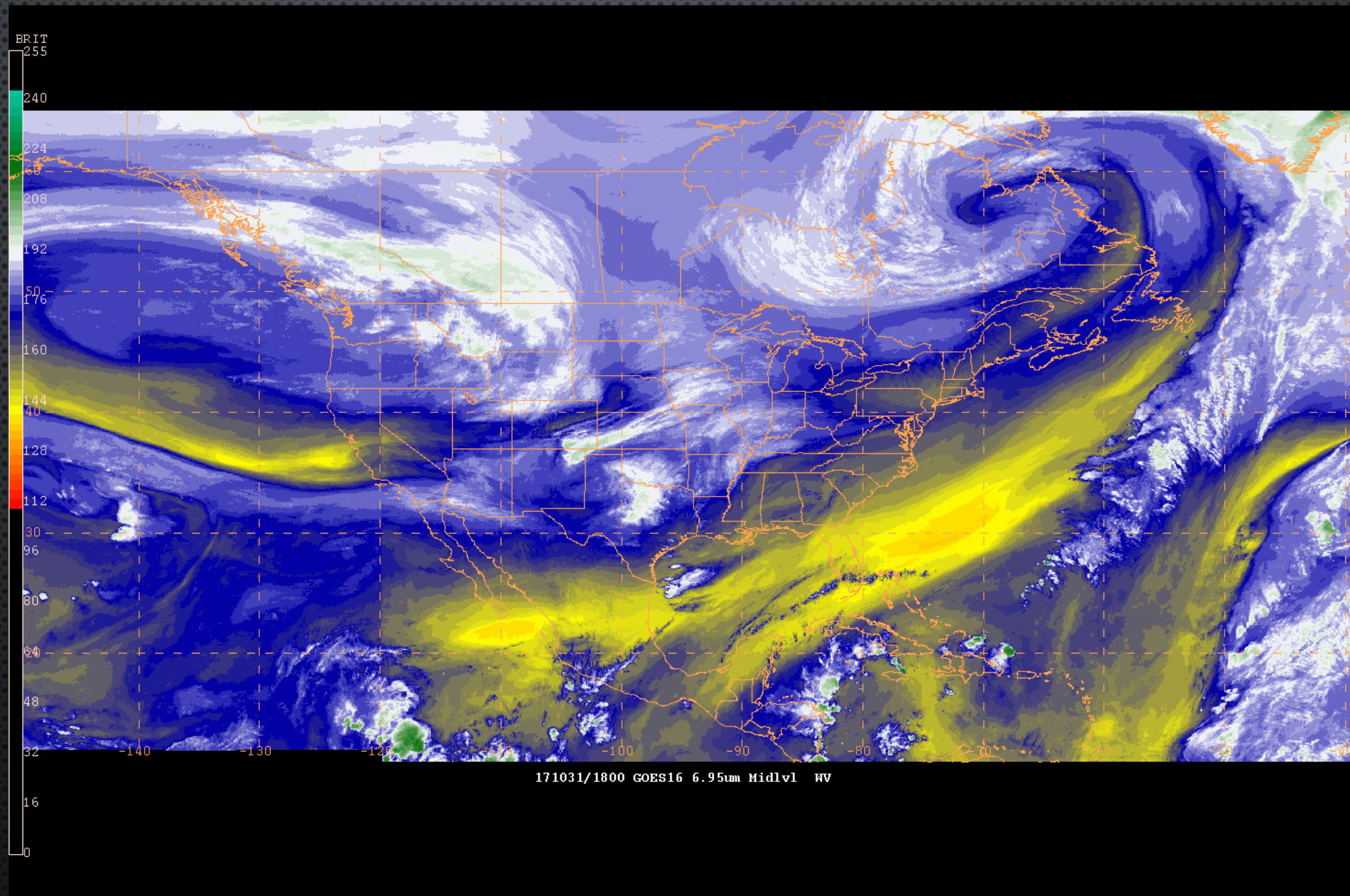


CONUS composites

GOES-16 and GOES-15

IR composite

WV composite



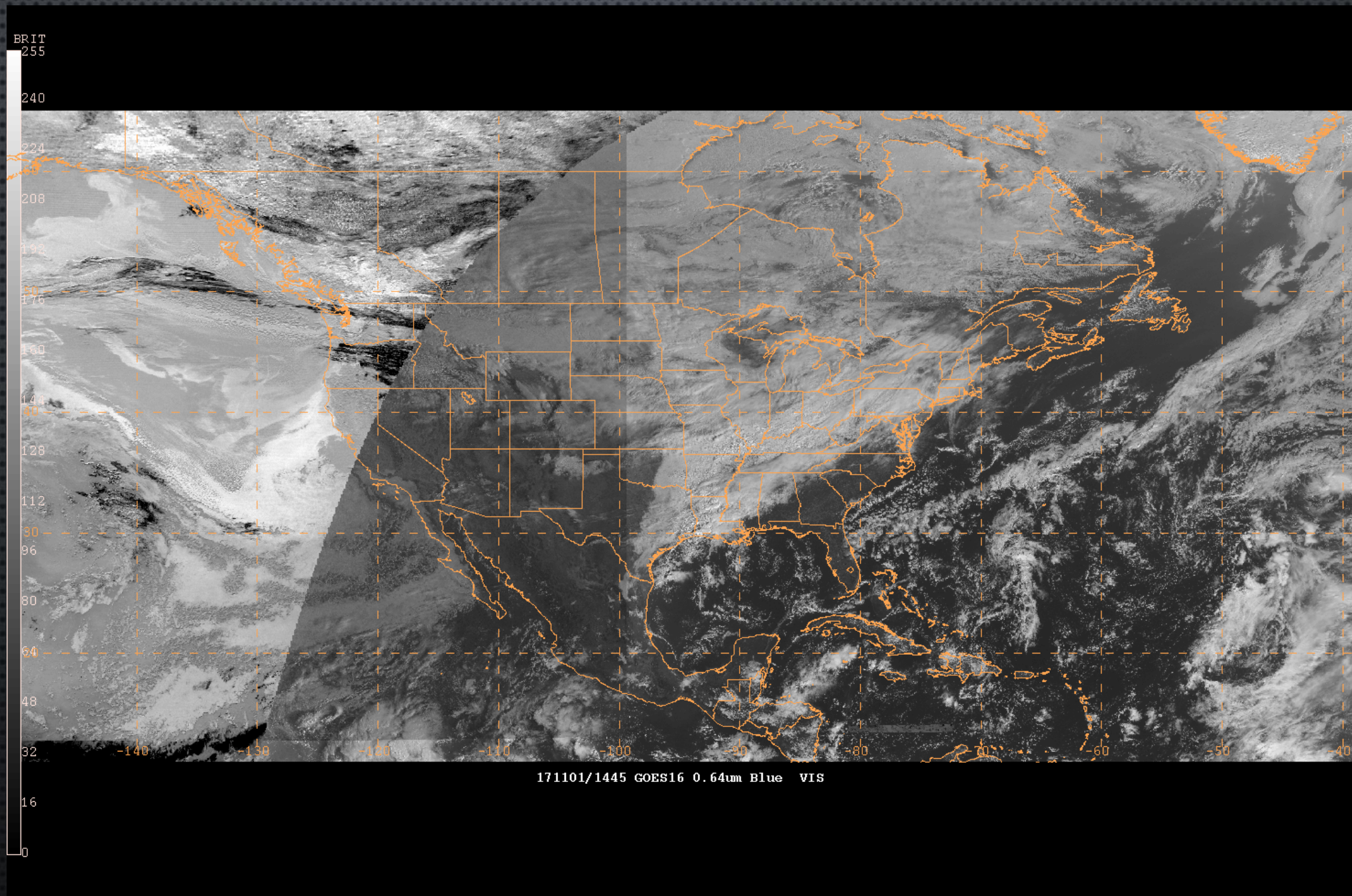
CONUS composites

GOES-16 and GOES-15

IR composite

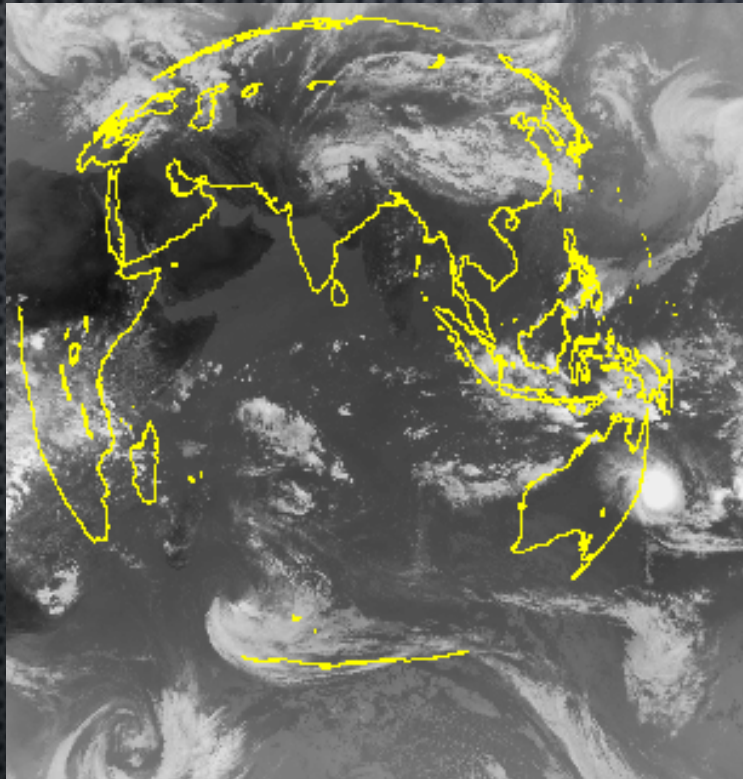
WV composite

Vis/Fog composite



ISRO ADDE servers

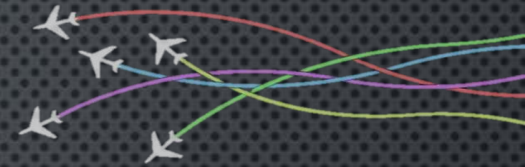
Testing INSAT data at AWC



ISRO L1C imager data from EUMETSAT

- *Viewable through the ADDE IIND keyword*
- *Not meant for L1C data though, so map and navigation were incorrect*
- *Then the feed from EUMETSAT died...*

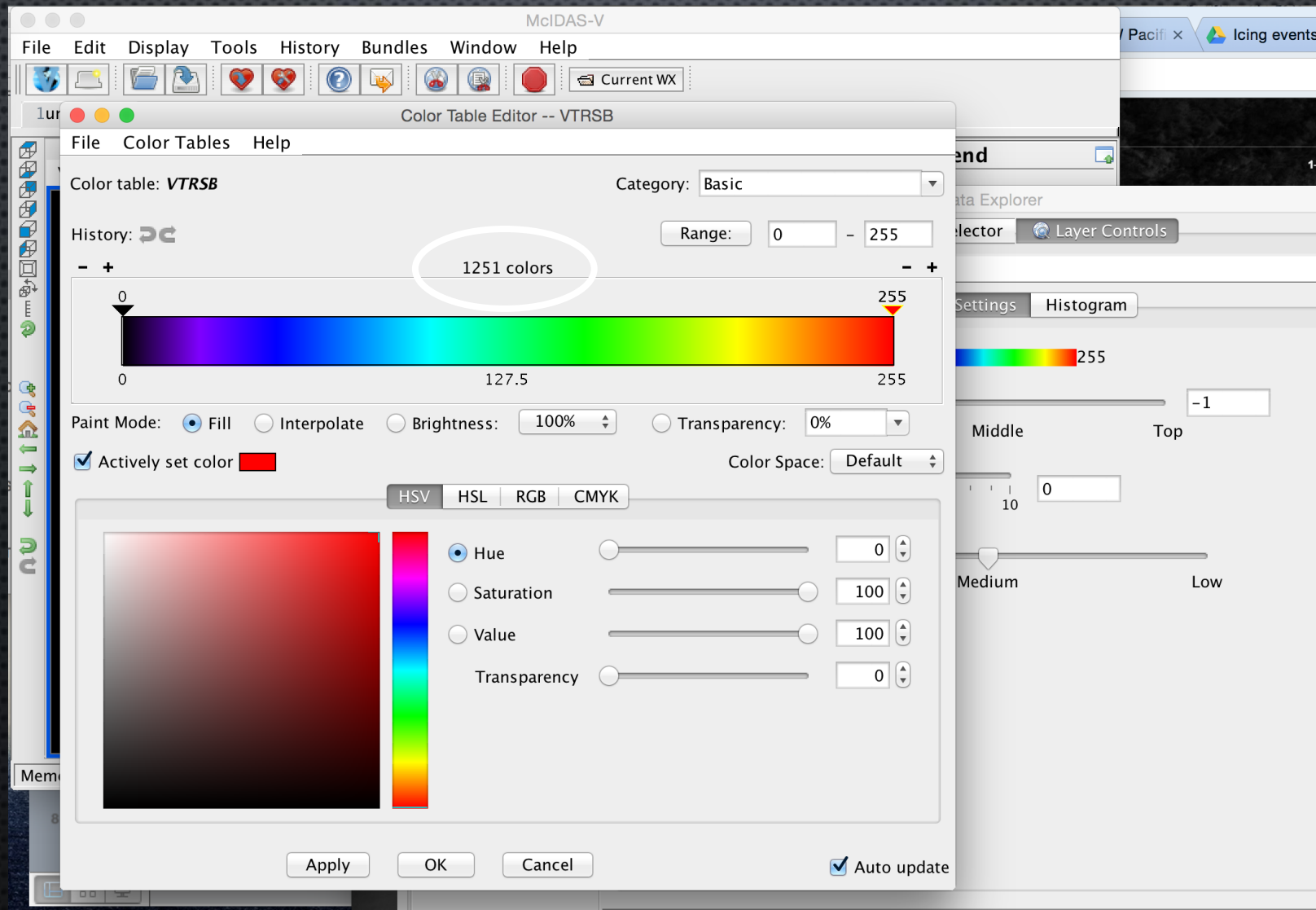
2 0002 INSAT3D-IMG 5 20 MAR 18079 110000 00001 00001 40.00



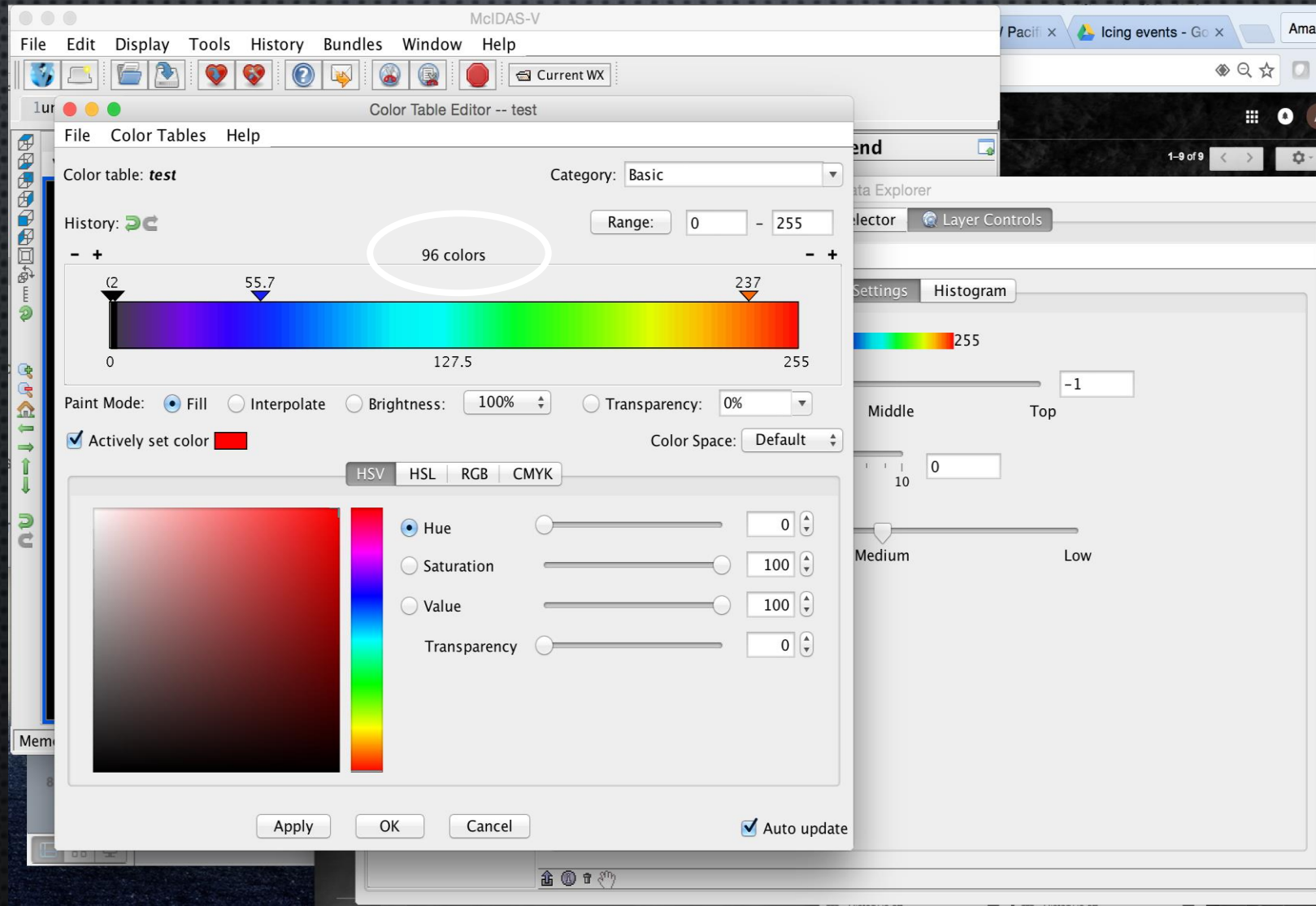
McIDAS-V UTILITY



MCIDAS-V CONCEPTS AT THE AWC



MCIDAS-V CONCEPTS AT THE AWC





QUESTIONS?

THANKS!

