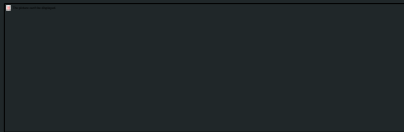


McIDAS Imagery Produced for NCAR/EOL Field Campaigns

Carol Costanza and Greg Stossmeister
National Center for Atmospheric Research (NCAR)
Earth Observing Laboratory (EOL)



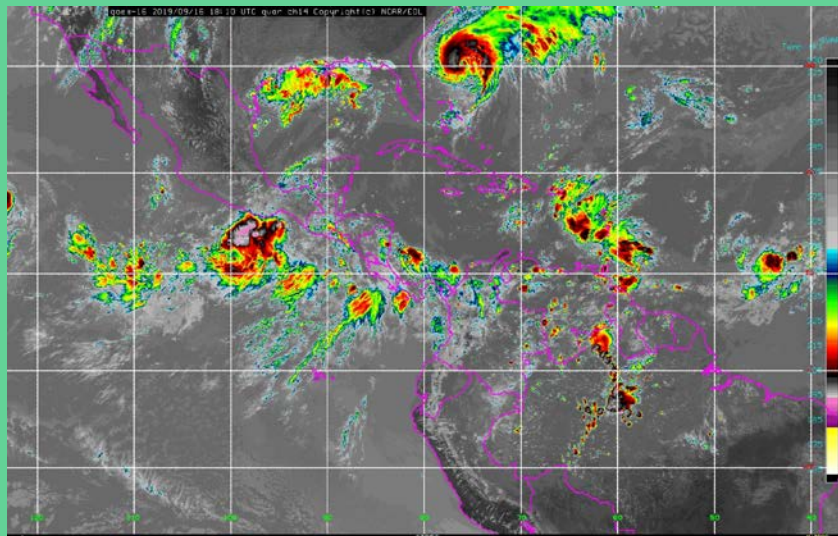
What is the Field Catalog?

- Real-time Imagery
- Quicklooks
- Reports
- Mission Table
- Catalog Maps
- <http://catalog.eol.ucar.edu/>

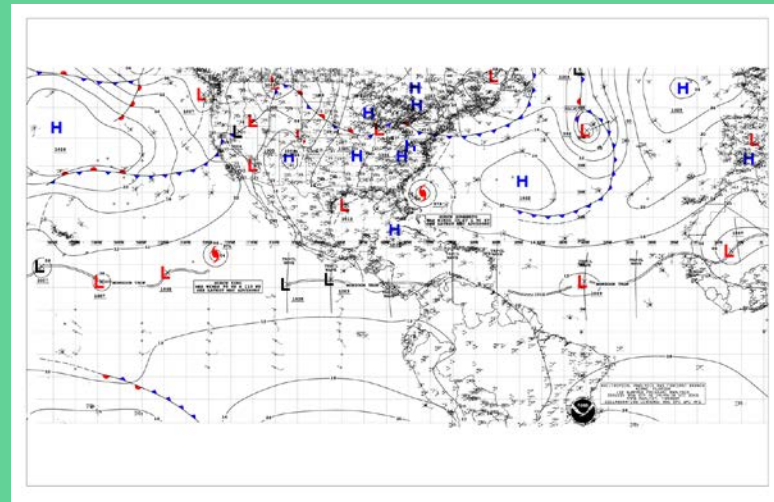
The screenshot shows the OTREC Field Catalog website. The header features the OTREC logo (Organization of Tropical East Pacific Convection) and the title "OTREC Field Catalog". Below the header is a navigation menu with links for Home, Maps, Reports, Status, Products, Missions, Tools & Links, and Help. The main content area is titled "Satellite" and shows the current time as "2019/09/09 21:27 UTC". There are options to "Choose Other Date (UTC)" and "Choose Other Product Group". Below this, there is a section for "Geostationary Satellite Products" for "2019/09/09 (UTC)". The products listed are:

Product Name	Time (UTC)	Date (UTC)	Loop Last
2km ch14 longwave-ir	21:10 (UTC)	2019/09/09	Loop Last: 6 12 24
2km ch2 hires vis	21:10 (UTC)	2019/09/09	Loop Last: 6 12 24
6km ch14 longwave-ir	21:10 (UTC)	2019/09/09	Loop Last: 6 12 24
6km ch2 hires vis	21:10 (UTC)	2019/09/09	Loop Last: 6 12 24
6km ch8 upper-level water vapor	21:10 (UTC)	2019/09/09	Loop Last: 6 12 24
Saharan Dust	15:00 (UTC)	2019/09/09	Loop Last: 6 12 24

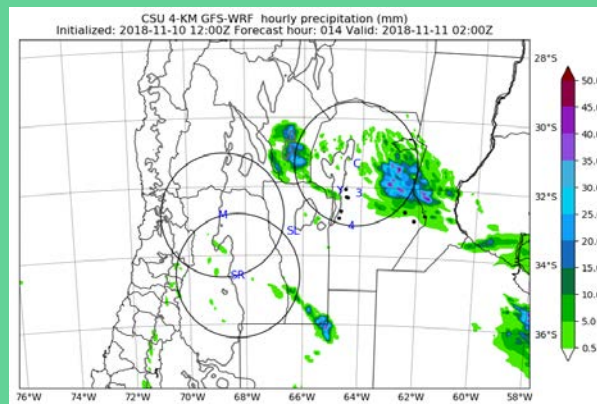
102nd Field Catalog since 1995



In-House Products



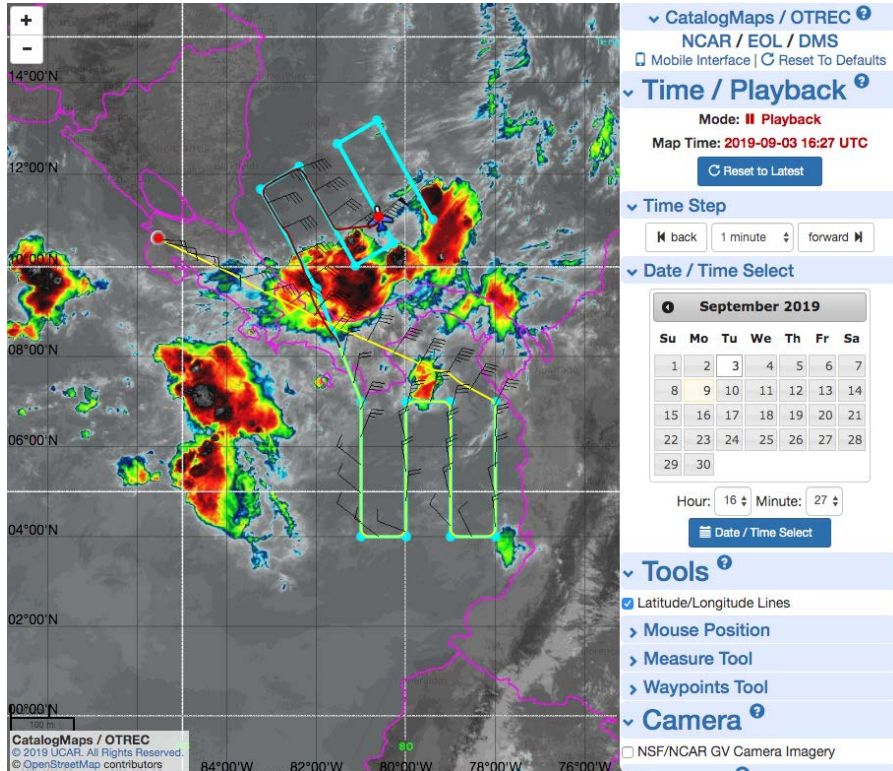
Web Products



PI Generated Products



Catalog Maps



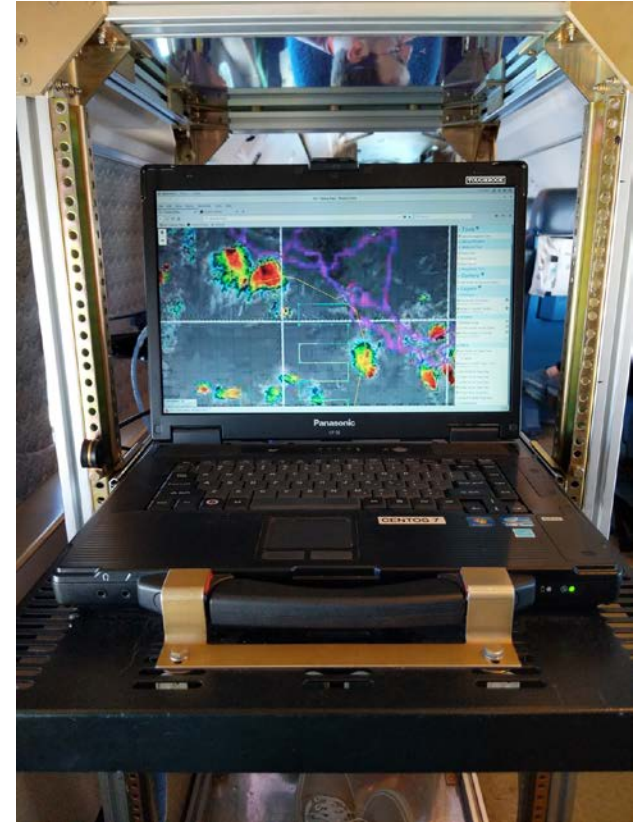
- Flight Tracks
- Flight Plans
- Radar Overlays
- Satellite Imagery
- Lightning
- Playback

Other Features

- Relay McIDAS imagery to research aircraft
- Scaled down Catalog Maps
- IRC chat
- Instrument status
- Burn charts



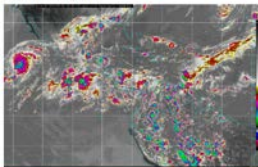
NSF NCAR GV



OTREC 2018

Home Maps Reports Status Products Missions Tools & Links Help

Latest Satellite



Status

The OTREC Dry Run took place between 1 August and 1 October 2018. The field catalog contains satellite, surface, upper-air, and model data for the whole time period. The OTREC field campaign will occur between 5 August and 30 September 2019. The field project aims to understand the mechanisms that govern the interaction of convection with its surroundings in the Eastern Pacific. For other Data Management related questions, please see the OTREC Web Page at NCAR/EOL.

External Websites

OTREC 2018
EOL
EOL/PMO
EOL/DMS

Catalog Resources

Field Catalog
Catalog Users Guide
Uploaded Documents
Contact Us

Social

ECM Facebook
Mission IRC
Research IRC
Password
Contact Us

© 2019 UCAR. All Rights Reserved.

Much of the material found on the Site is based upon work supported by the National Science Foundation. The National Center for Atmospheric Research is sponsored by the National Science Foundation (NSF).

Planning



Operations



Post



RELAMPAGO Data Sets		
Data Set Name (Responsible Group/Pis shown in parentheses)	Date Posted	Info
Accompanying Archives		
DOE/ARM CACTI Data Archive	2018-10-22	📄
RELAMPAGO Dry Run Field Catalog (NCAR/EOL)	2017-11-16	📄
RELAMPAGO Field Catalog (NCAR/EOL)	2018-10-22	📄
SOS China Data Archive (INMPE)		
Aerosols		
CACTI Aerodynamic Particle Sizer (APS) Data (DOE/ARM)	2018-11-25	📄
CACTI Aerosol Chemical Speciation Monitor (ACSM) Data (DOE/ARM)	2018-11-25	📄
CACTI Aerosol Classification System (ACS) Data (DOE/ARM)	2018-11-25	📄
CACTI Aerosol Optical Properties (AOP) Data (DOE/ARM)	2019-02-12	📄
CACTI Anthropometer Data (DOE/ARM)	2019-02-12	📄
CACTI Comet Sunphotometer (CSPHOT) Data (DOE/ARM)	2018-11-25	📄
CACTI Cloud Condensation Nuclei (CCN) Particle Counter Data (DOE/ARM)	2018-11-25	📄
CACTI Condensation Particle Counter (CPC) Data (DOE/ARM)	2018-11-25	📄
CACTI G1 2-Dimensional Stereo (2DS) Probe Data (DOE/ARM)	New 2019-09-27	📄

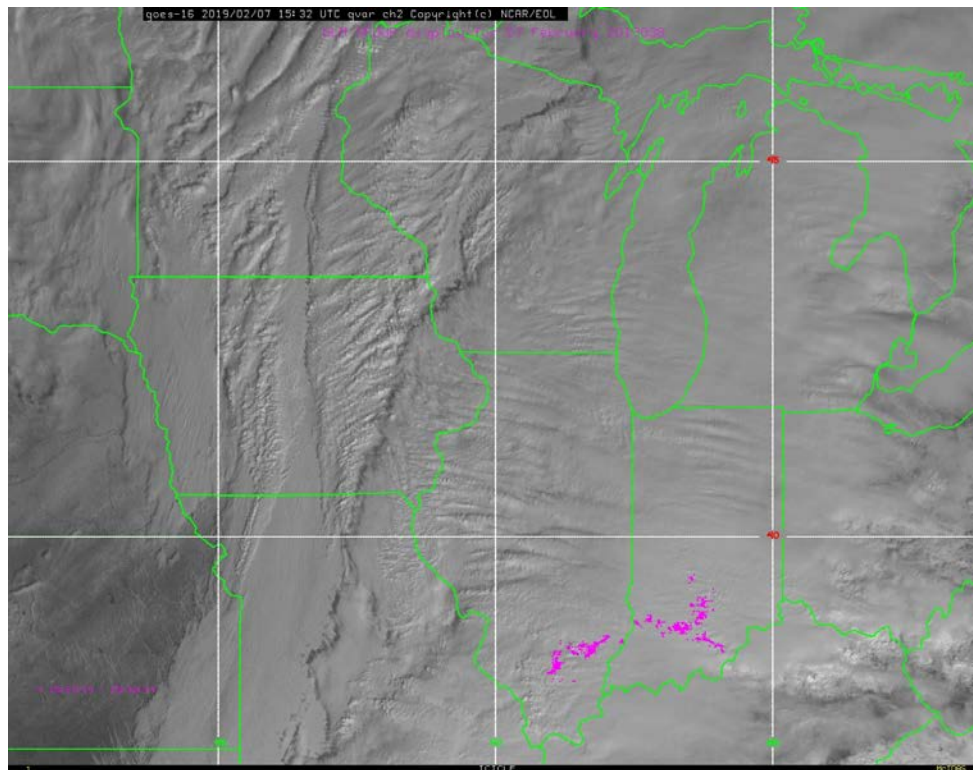
- DATA BY CATEGORY**
- Accompanying Archives
 - Aerosols
 - Aircraft
 - Ancillary
 - Chemistry
 - Flux
 - Hydrology
 - Land Based
 - Lightning
 - Photography
 - Radar
 - Radiation
 - Satellite
 - Upper Air

Back to RELAMPAGO

Email comments & questions to ec-dms@ucar.edu

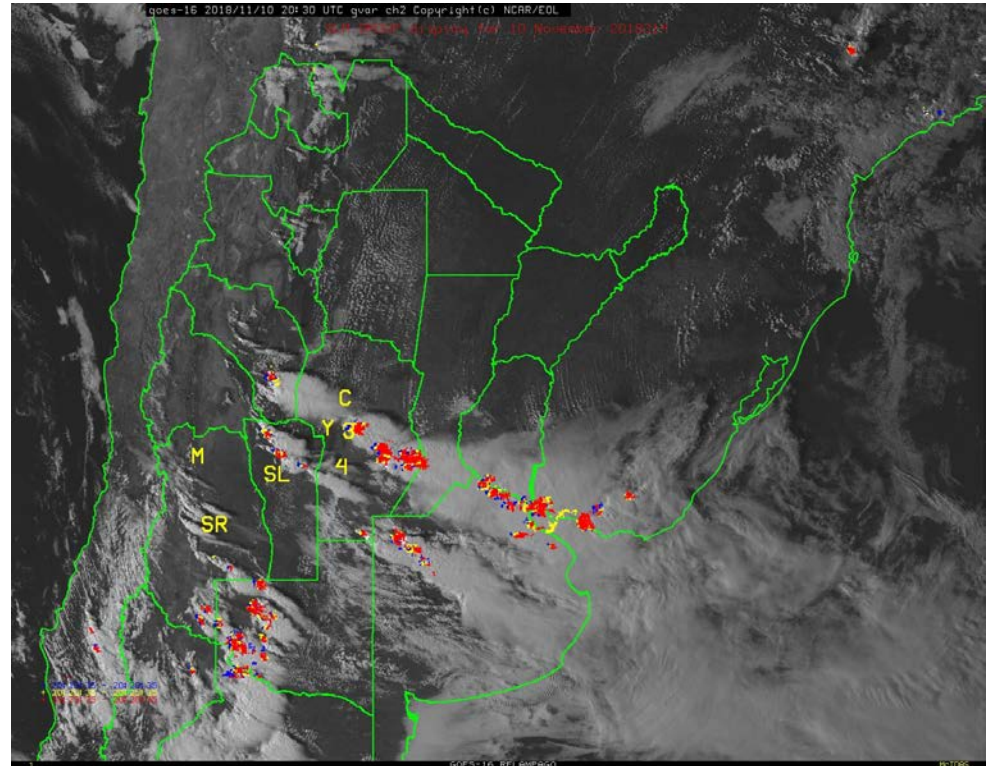
How do we use McIDAS?

- GOES-16
- HIMAWARI-8
- METEOSAT-11
- Other Polar Orbiters
- Creating 5, 10, or 15 minute imagery over project domains
- Mercator



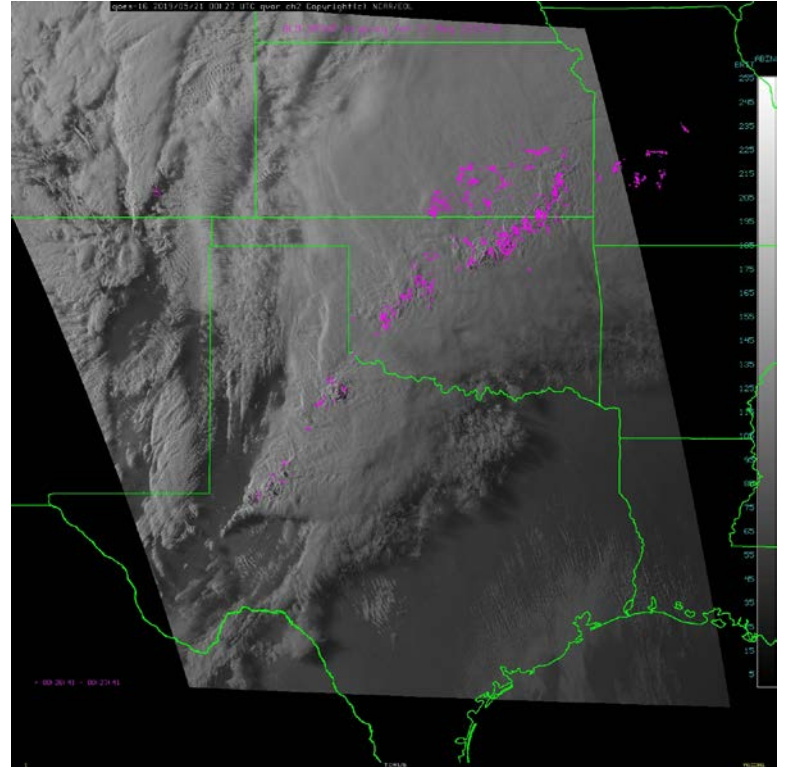
GLMDISP

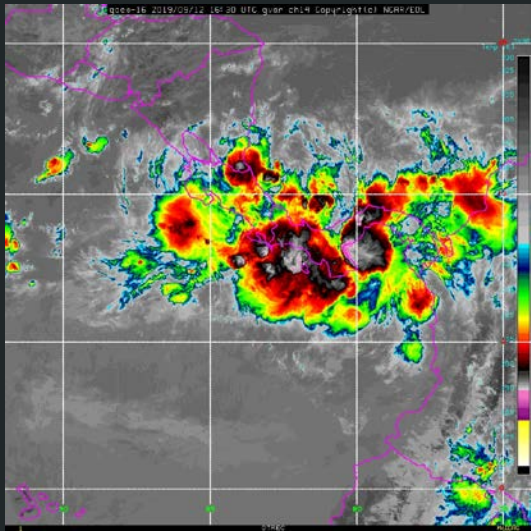
- Started in Fall 2018
- Plotting GROUP
- Full Disk intervals every 5 minutes
- Especially useful outside USPLN



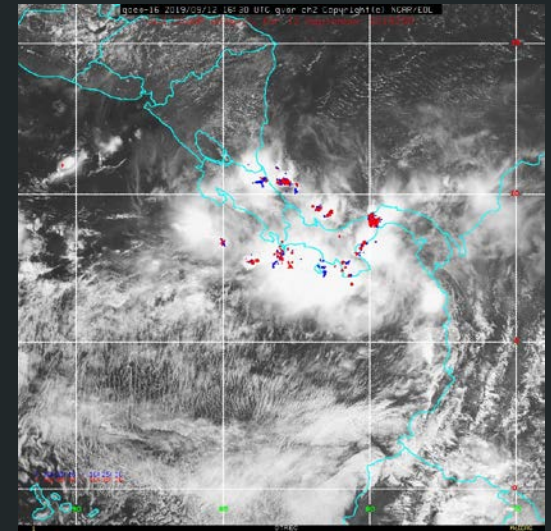
Moving MDS with GLM

- PIs can request their own MDS over a given project domain
- Searching over a 10° by 10° area
- 1 minute imagery with 1 minute GLM data





Thank you!



Field Catalog is a requestable resource NCAR/EOL can provide
for any field campaign

Contact Carol (costanza@ucar.edu) or Greg (gstoss@ucar.edu)
for more information

Demos

General OTREC Field Catalog

http://catalog.eol.ucar.edu/otrec/satellite/209/loop?utf8=%E2%9C%93&category=15&subcategory=209&date=2019%2F09%2F09&platform=1299&hours%5B%5D=+0&hours%5B%5D=+1&hours%5B%5D=+2&hours%5B%5D=+3&hours%5B%5D=+4&hours%5B%5D=+5&hours%5B%5D=+6&hours%5B%5D=+7&hours%5B%5D=+8&hours%5B%5D=+9&hours%5B%5D=10&hours%5B%5D=11&hours%5B%5D=12&hours%5B%5D=13&hours%5B%5D=14&hours%5B%5D=15&hours%5B%5D=16&hours%5B%5D=17&hours%5B%5D=18&hours%5B%5D=19&hours%5B%5D=20&hours%5B%5D=21&hours%5B%5D=22&hours%5B%5D=23&loop_dataset_290205.x=7&loop_dataset_290205.y=2

http://catalog.eol.ucar.edu/relampago/satellite/209/loop?utf8=%E2%9C%93&category=15&subcategory=209&date=2018%2F11%2F10&platform=1299&hours%5B%5D=10&hours%5B%5D=11&hours%5B%5D=12&hours%5B%5D=13&hours%5B%5D=14&hours%5B%5D=15&hours%5B%5D=16&hours%5B%5D=17&hours%5B%5D=18&hours%5B%5D=19&hours%5B%5D=20&hours%5B%5D=21&hours%5B%5D=22&loop_dataset_242748.x=10&loop_dataset_242748.y=9

http://catalog.eol.ucar.edu/icicle/satellite/209/loop?utf8=%E2%9C%93&category=15&subcategory=209&date=2019%2F02%2F23&platform=1299&hours%5B%5D=12&hours%5B%5D=13&hours%5B%5D=14&hours%5B%5D=15&loop_dataset_266224.x=6&loop_dataset_266224.y=4

TORUS May 20th 18:00 UTC catalog maps

OTREC Sept. 3rd 14:30 UTC catalog maps