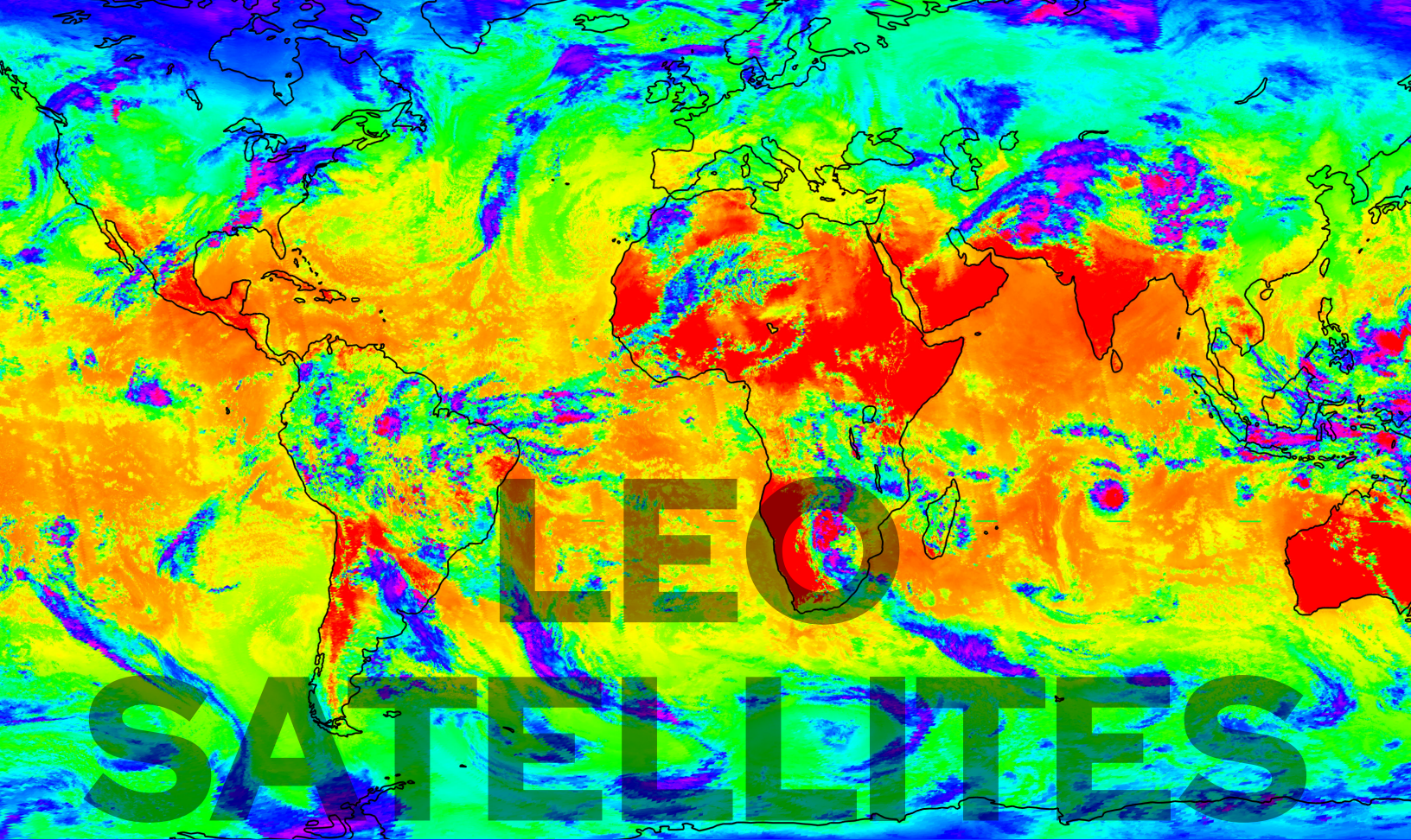


# LOW | EARTH SATELLITES



Low-Earth Orbiting weather satellites are an essential part of the US weather prediction system. Data provided by LEO weather satellites are the foundation for today's weather prediction and improve medium-range weather forecasts that impact communities and commerce.





## **In-depth data**

LEO weather satellites provide high-resolution data that is essential for predicting large-scale weather patterns that impact commerce and industry.

## **Innovation**

The Space Science and Engineering Center has been a leader in satellite sensor design and innovation for 60 years. SSEC provides end-to-end expertise in sensor development, characterization, pre-launch testing, and post-launch calibration.

## **Supporting the future**

SSEC supports the development of current and next generation LEO satellites and sensors including the Joint Polar Satellite System (JPSS) and Near Earth Orbit Network (NEON).

